



1675 E. Pleasant Valley Rd – Approx. 20 Acres

- APN # 230-0-061-055
- 15 Acres of Organic Row Crop Land, Suitable for Growing Berries (3 yr Lease through June 30, 2023)
- 5 Acs w/ 40,050 SF of Greenhouses + Improvements
- Dual Water Sources - Pleasant Valley County Water District Water for Organic Row Crop Ground & Private Water Well for Greenhouses

For Sale at \$2,695,000

Lynn Osslund 469.2053, Lic #00623752 or Jillian Bailey 340.0015, Lic #00806262

JACOBSON REALTY, INC.

445 Rosewood Avenue, Suite J Camarillo, CA 93010

805.389.4747 phone 805.389.4744 fax

Email: jacobsonrealtyinc@gmail.com Web Address: www.jrealty.com

FOR SALE

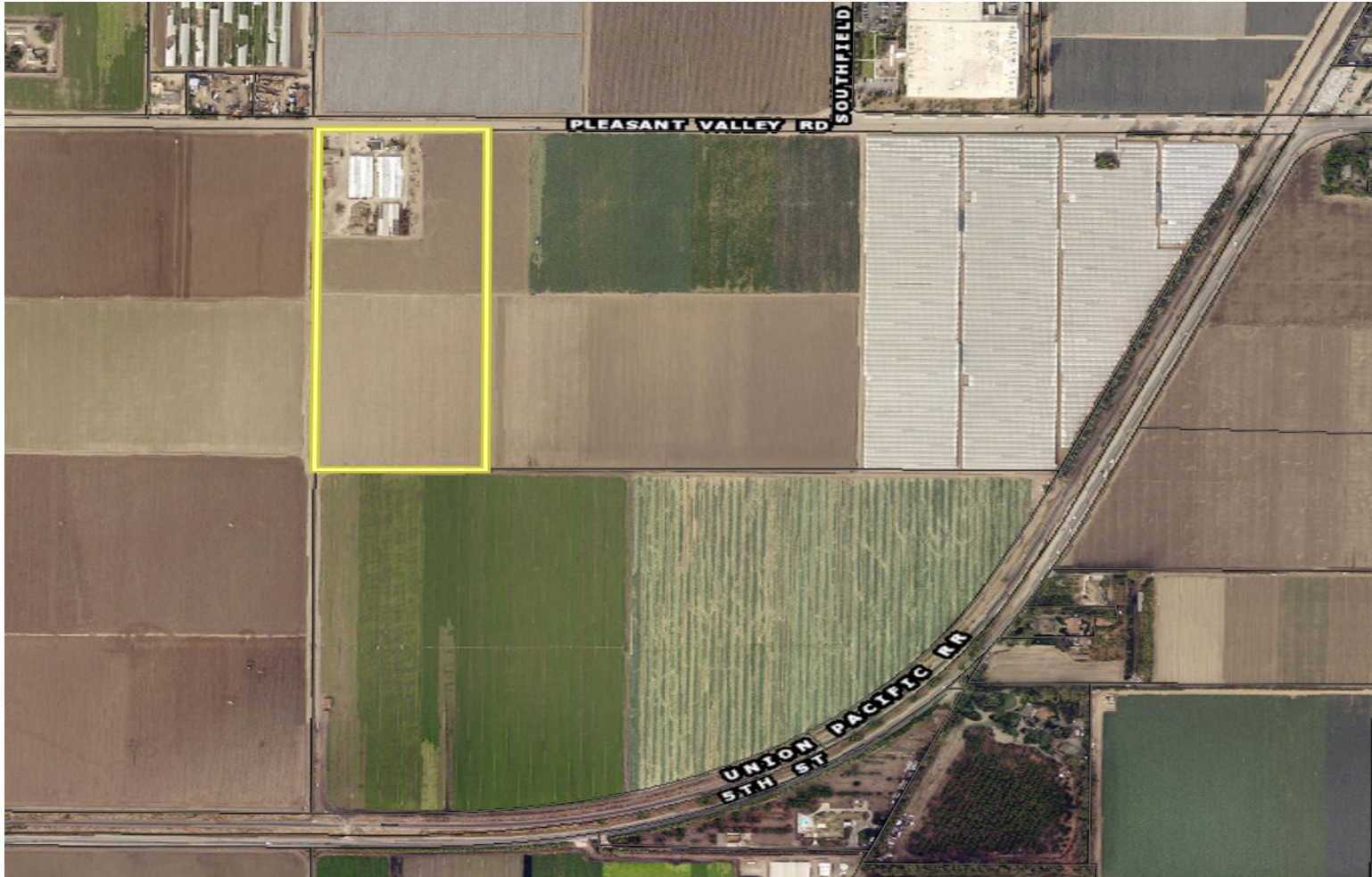
20 Acres w/ 40,050 sq ft of Greenhouses, Camarillo CA

Improvements include:

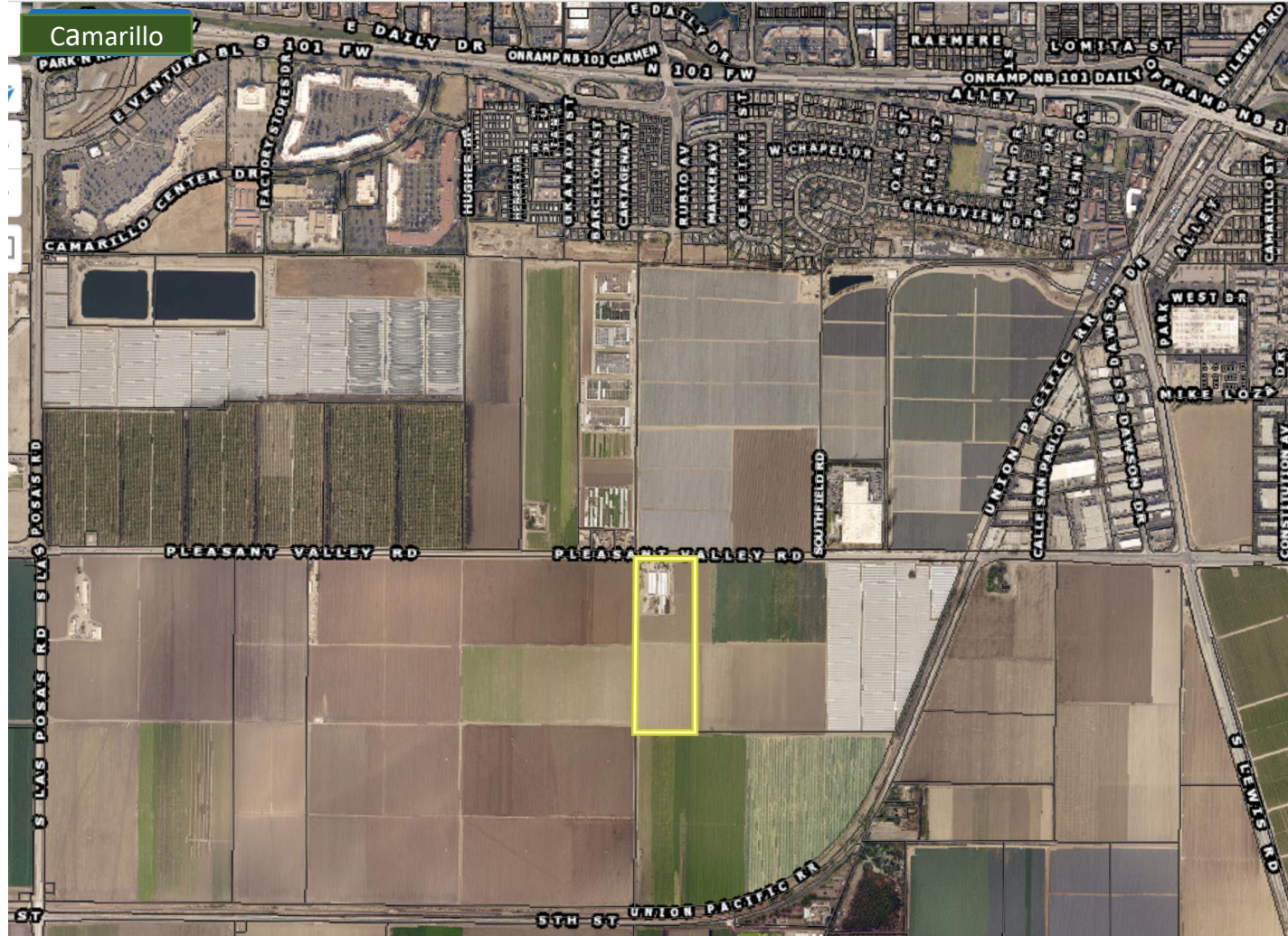
- 3 Vintage Greenhouses – 2 Glass, 1 Plexi
- 3 Bdrm 1.5 Ba House w/office, Storage Room, Garage and Carport (approx. 2000 sq ft)
- 1 Bdrm 1 Ba (fixer) farmhouse w/ Storage Bldg
- 1 Equipment shed 2,000+/- sf
- Filtration System
- 2nd Fertilizer System & New Water Tank
- Private Water Well approx. 15 years old
- Lighting & Temperature Controls (heat)
- Adjustable Top and Side Windows for cooling
- Metal Storage Building
- Tenants have 1st Right of Refusal



Camarillo

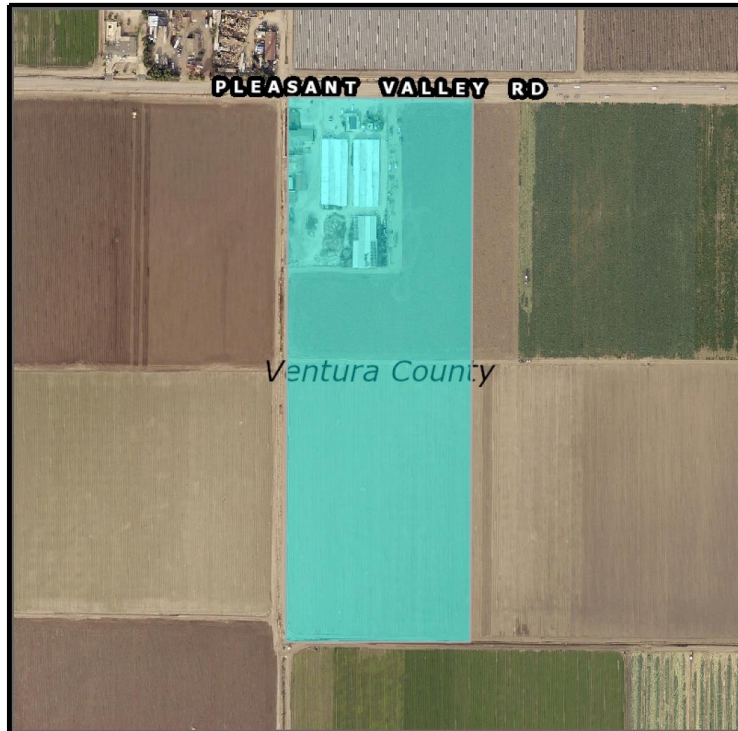


1675 E. Pleasant Valley Road, Camarillo, CA - 20 Acres w/ 40,050 +/- sf of Greenhouses



1675 E. Pleasant Valley Rd., Camarillo, CA - 20 Acres Row Crop Land + Improvements

20 Acres w/ 15 Acs Organic Row Crop Land & Improvements FOR SALE



1675 E. Pleasant Valley Rd, Camarillo, CA - 20 Acres w/ 40,050 +/- sf of Greenhouses

JACOBSON REALTY, INC.

445 Rosewood Avenue, Suite J, Camarillo, CA 93010
805.389.4747 phone 805.389.4744 fax

jacobsonrealtyinc@gmail.com www.jrealty.com

Lynn Osslund 805.469.2053 or Jillian Bailey 805.340.0015

Lic #00623752 Lic. #00305498 Lic #00806262

5.66 & 68; RANCHO EX-MISSION, TRACT NO. 2
VALLEY ROAD

Tax Rate Area
75004
75010

230-06

1" = 800'

PLEASANT VALLEY ROAD

DETAIL 'B'
Scale: 1"=200'

67

5.66 & 68; RANCHO EX-MISSION, TRACT NO. 2
VALLEY ROAD

Tax Rate Area
75004
75010

230-06

1" = 800'

PLEASANT VALLEY ROAD

DETAIL 'B'
Scale: 1"=200'

67

Email: jacobsonrealtyinc@gmail.com Web Address: www.jrealty.com

The information above has been obtained from sources believed to be reliable. While we do not doubt its accuracy, we have not verified it and make no guarantee, warranty or representation about it. It is your responsibility to independently confirm its accuracy and completeness. Any projections, opinions, assumptions or estimates used are for example only and do not represent the current or future performance of the property. The value of this transaction to you depends on tax and other factors which should be evaluated by your tax, financial and legal advisors. You and your advisors should conduct a careful, independent investigation of the property to determine to your satisfaction the suitability of the property for your needs.



1675 E. Pleasant Valley Rd. - 20 Acres w 15 acres of Organic Row Crop Land & Improvements

The information above has been obtained from sources believed to be reliable. While we do not doubt its accuracy, we have not verified it and make no guarantee, warranty or representation about it. It is your responsibility to independently confirm its accuracy and completeness. Any projections, opinions, assumptions or estimates used are for example only and do not represent the current or future performance of the property. The value of this transaction to you depends on tax and other factors which should be evaluated by your tax, financial and legal advisors. You and your advisors should conduct a careful, independent investigation of the property to determine to your satisfaction the suitability of the property for your needs.



1675 E. Pleasant Valley Rd, Camarillo, CA - 20 Acres w/ 15 Acs Organic Row Crop Land & Improvements

The information above has been obtained from sources believed to be reliable. While we do not doubt its accuracy, we have not verified it and make no guarantee, warranty or representation about it. It is your responsibility to independently confirm its accuracy and completeness. Any projections, opinions, assumptions or estimates used are for example only and do not represent the current or future performance of the property. The value of this transaction to you depends on tax and other factors which should be evaluated by your tax, financial and legal advisors. You and your advisors should conduct a careful, independent investigation of the property to determine to your satisfaction the suitability of the property for your needs.



1675 E. Pleasant Valley Road, Camarillo, CA - 20 Acres with 15 Acs Organic Row Crop Land & Improvements

The information above has been obtained from sources believed to be reliable. While we do not doubt its accuracy, we have not verified it and make no guarantee, warranty or representation about it. It is your responsibility to independently confirm its accuracy and completeness. Any projections, opinions, assumptions or estimates used are for example only and do not represent the current or future performance of the property. The value of this transaction to you depends on tax and other factors which should be evaluated by your tax, financial and legal advisors. You and your advisors should conduct a careful, independent investigation of the property to determine to your satisfaction the suitability of the property for your needs.

40,050 sf of Greenhouses on 20+/- Acres For Sale

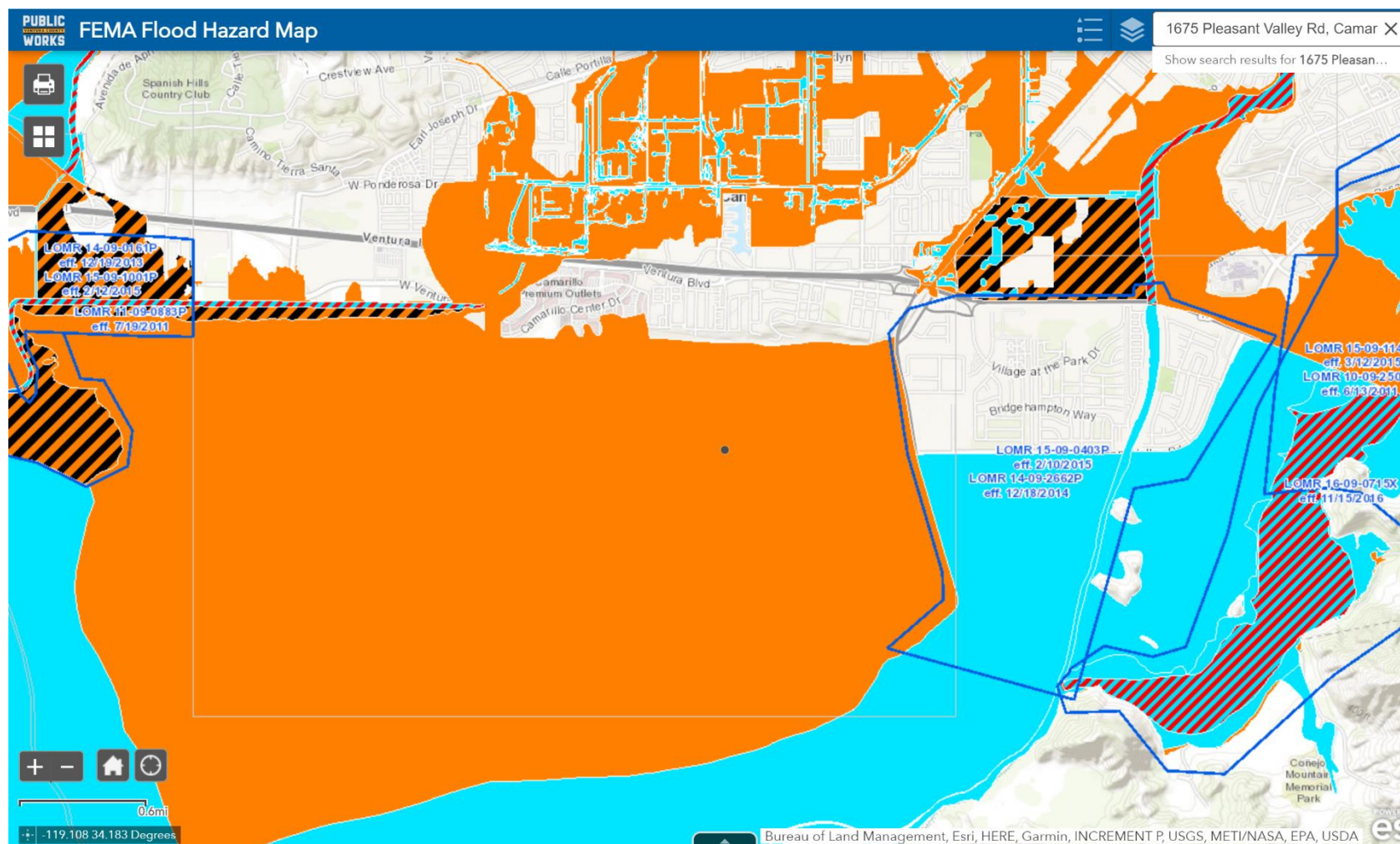
Lic. #00305498



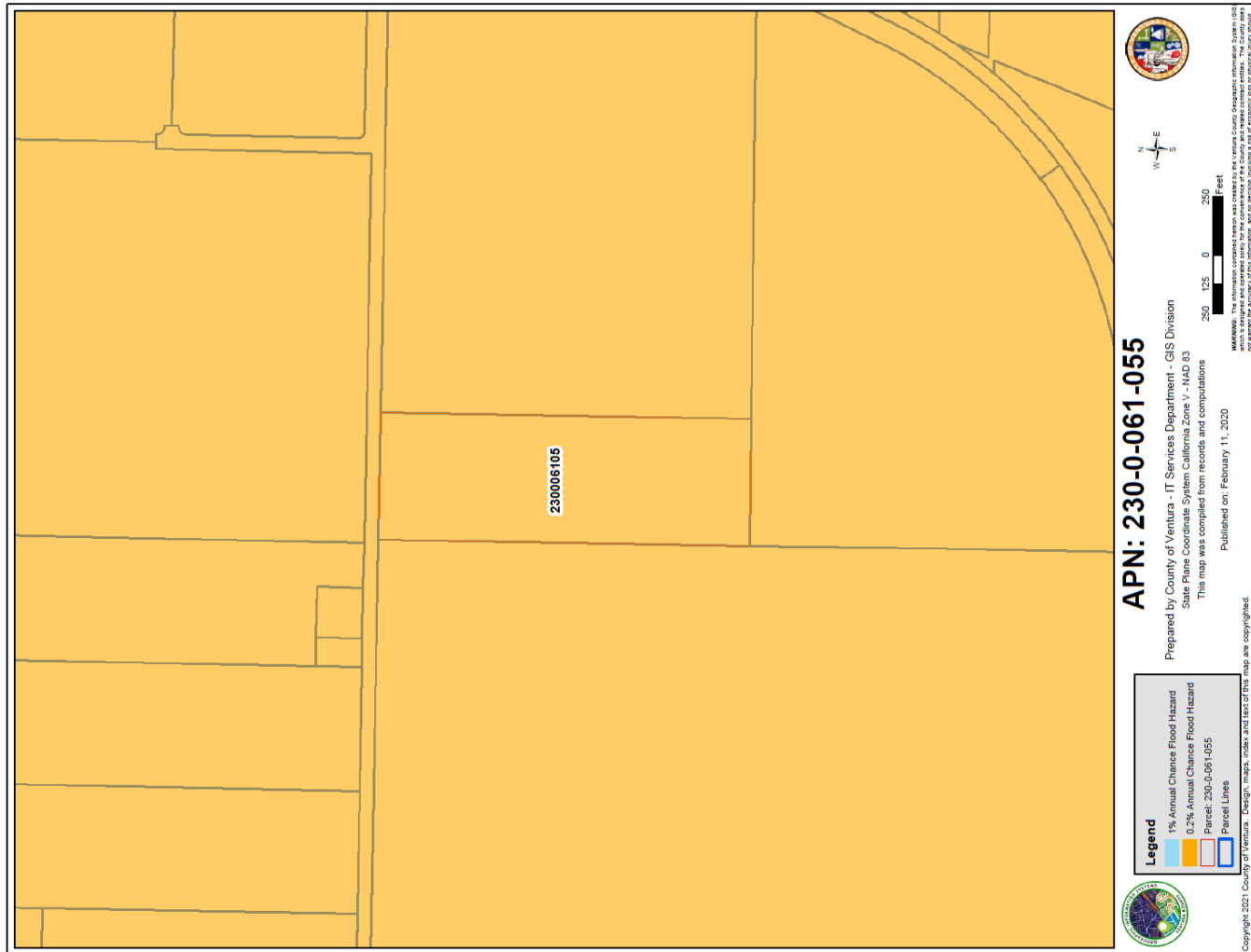
1675 E. Pleasant Valley Road, Camarillo, CA - 20 Acres w/ 15 Acs Organic Row Crop Land & Improvements

The information above has been obtained from sources believed to be reliable. While we do not doubt its accuracy, we have not verified it and make no guarantee, warranty or representation about it. It is your responsibility to independently confirm its accuracy and completeness. Any projections, opinions, assumptions or estimates used are for example only and do not represent the current or future performance of the property. The value of this transaction to you depends on tax and other factors which should be evaluated by your tax, financial and legal advisors. You and your advisors should conduct a careful, independent investigation of the property to determine to your satisfaction the suitability of the property for your needs.

FEMA Flood Map Overview

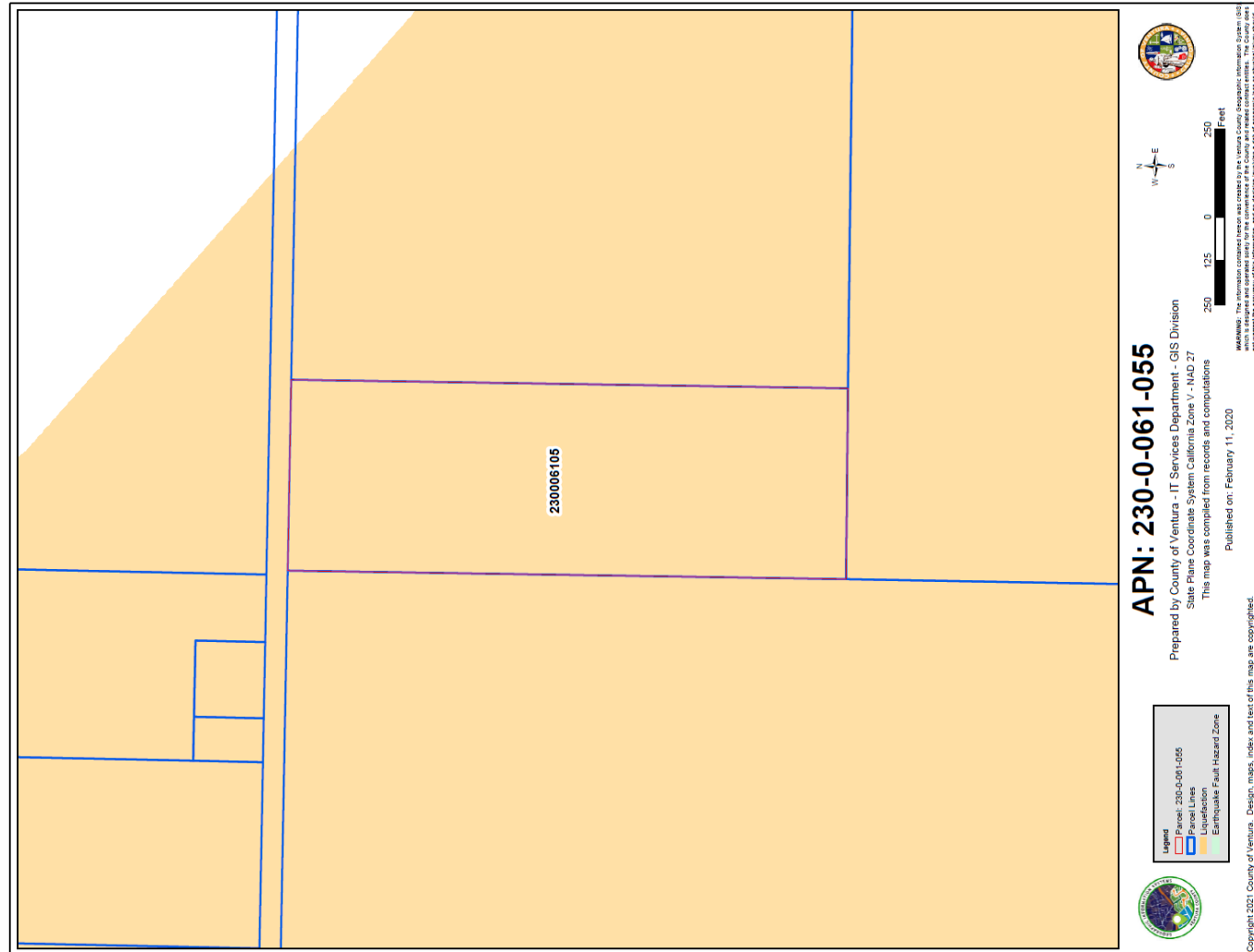


1675 E. Pleasant Valley Rd., Camarillo, CA - 20 Acres of Ag Land



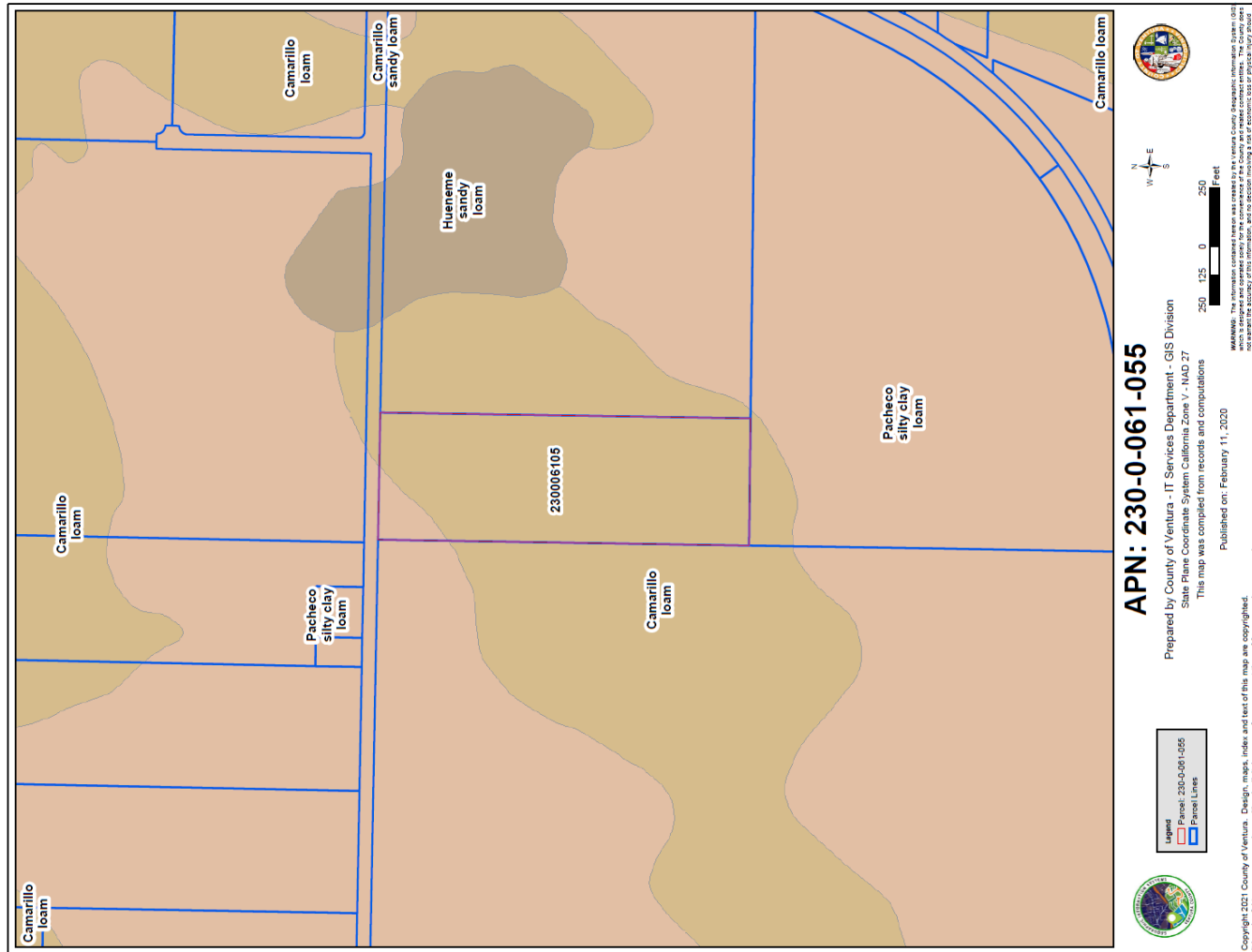
1675 E. Pleasant Valley Rd, Camarillo, CA - 20 Acres of Farmland on the Oxnard Plain

The information above has been obtained from sources believed to be reliable. While we do not doubt its accuracy, we have not verified it and make no guarantee, warranty or representation about it. It is your responsibility to independently confirm its accuracy and completeness. Any projections, opinions, assumptions or estimates used are for example only and do not represent the current or future performance of the property. The value of this transaction to you depends on tax and other factors which should be evaluated by your tax, financial and legal advisors. You and your advisors should conduct a careful, independent investigation of the property to determine to your satisfaction the suitability of the property for your needs.



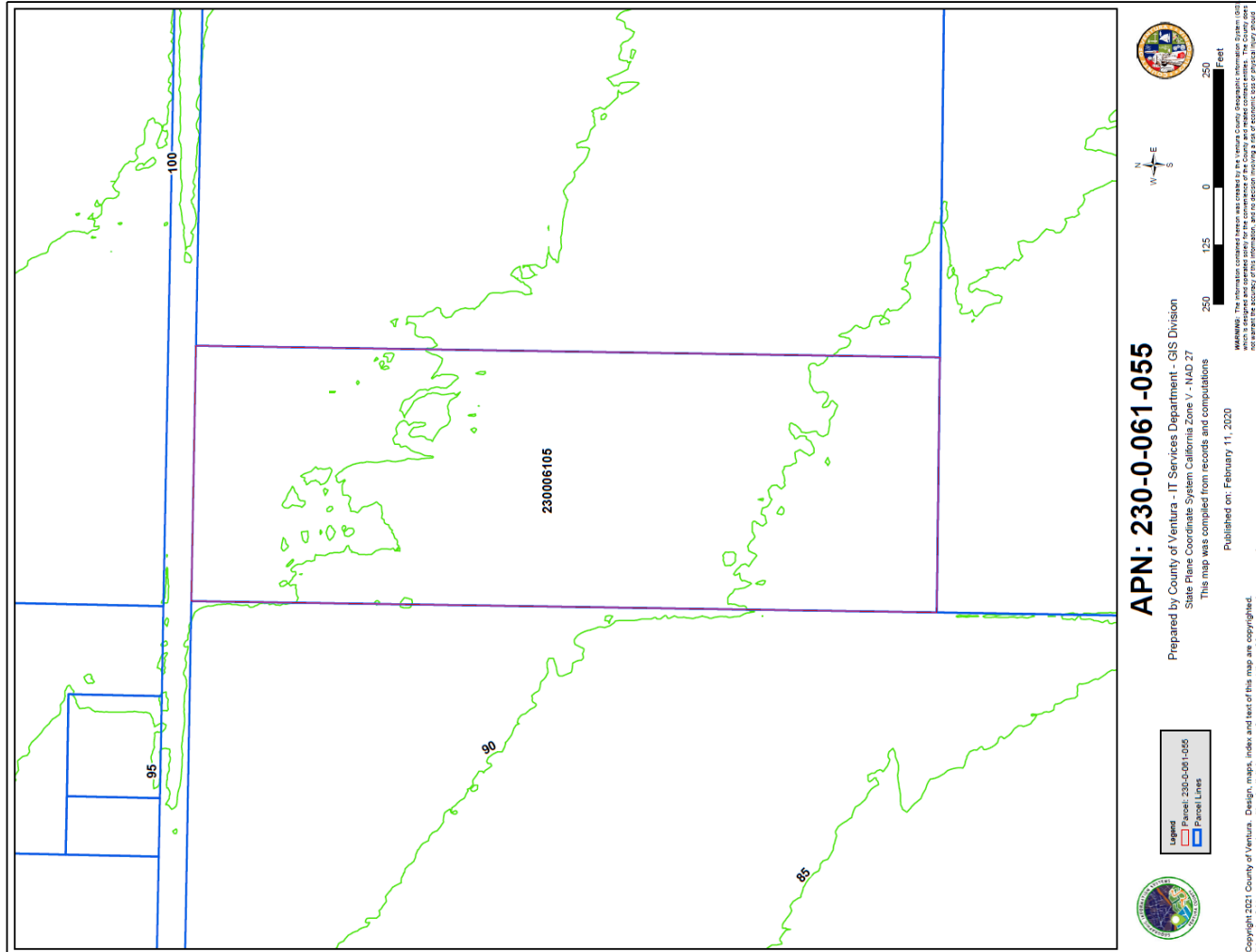
1675 E. Pleasant Valley Rd, Camarillo, CA - 20 Acres of Farmland on the Oxnard Plain

The information above has been obtained from sources believed to be reliable. While we do not doubt its accuracy, we have not verified it and make no guarantee, warranty or representation about it. It is your responsibility to independently confirm its accuracy and completeness. Any projections, opinions, assumptions or estimates used are for example only and do not represent the current or future performance of the property. The value of this transaction to you depends on tax and other factors which should be evaluated by your tax, financial and legal advisors. You and your advisors should conduct a careful, independent investigation of the property to determine to your satisfaction the suitability of the property for your needs.



1675 E. Pleasant Valley Rd, Camarillo, CA - 20 Acres of Farmland on the Oxnard Plain

The information above has been obtained from sources believed to be reliable. While we do not doubt its accuracy, we have not verified it and make no guarantee, warranty or representation about it. It is your responsibility to independently confirm its accuracy and completeness. Any projections, opinions, assumptions or estimates used are for example only and do not represent the current or future performance of the property. The value of this transaction to you depends on tax and other factors which should be evaluated by your tax, financial and legal advisors. You and your advisors should conduct a careful, independent investigation of the property to determine to your satisfaction the suitability of the property for your needs.



1675 E. Pleasant Valley Rd, Camarillo, CA - 20 Acres of Farmland on the Oxnard Plain

The information above has been obtained from sources believed to be reliable. While we do not doubt its accuracy, we have not verified it and make no guarantee, warranty or representation about it. It is your responsibility to independently confirm its accuracy and completeness. Any projections, opinions, assumptions or estimates used are for example only and do not represent the current or future performance of the property. The value of this transaction to you depends on tax and other factors which should be evaluated by your tax, financial and legal advisors. You and your advisors should conduct a careful, independent investigation of the property to determine to your satisfaction the suitability of the property for your needs.