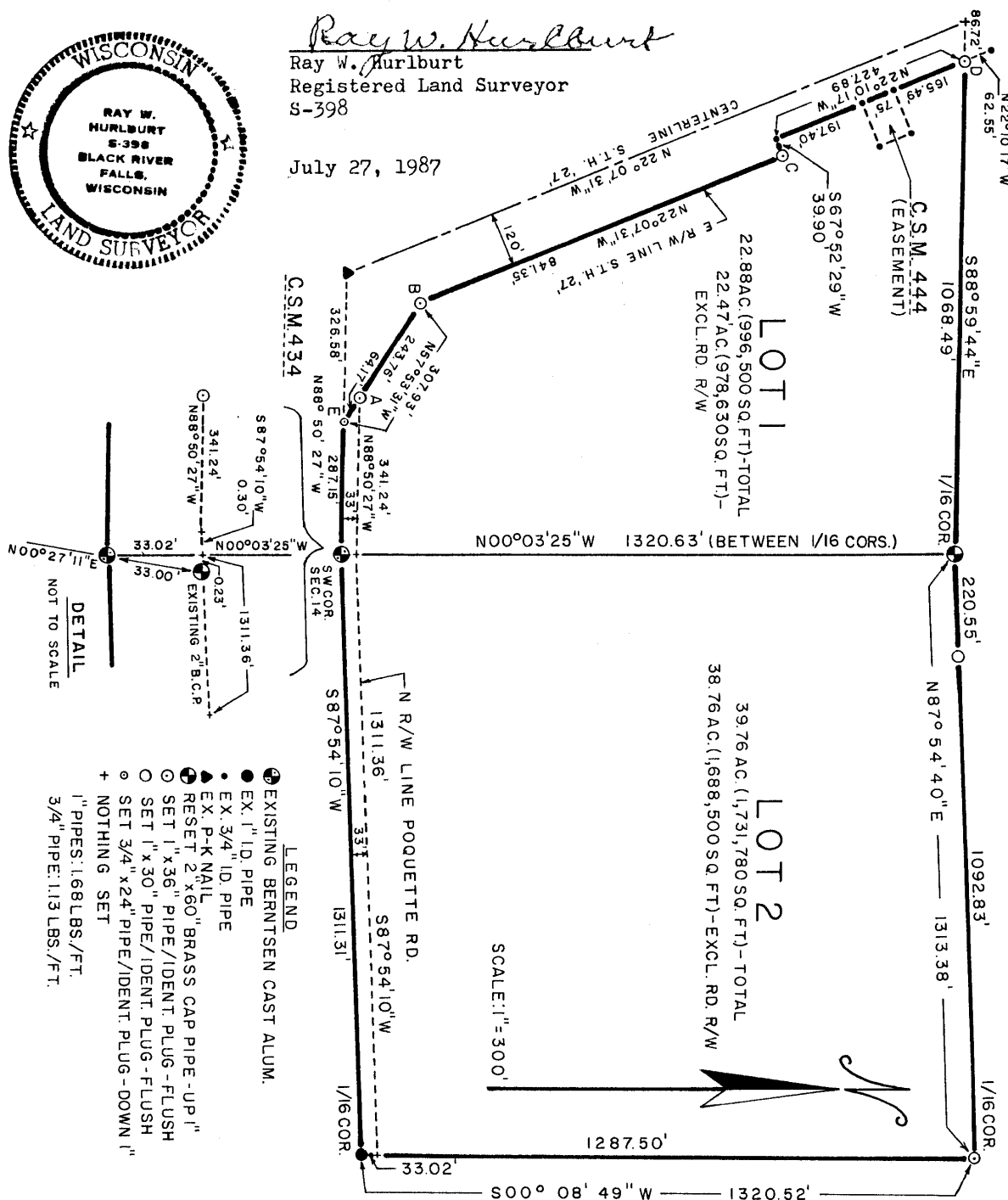
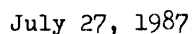


55

The bearings used in this survey are based on the South line of Section 14 as previously monumented and is assumed to bear South 87°54'10" West



MONUMENTS & EXPLANATIONS

1/16 cor E. of SW cor. Sec. 14 - Our unmarked R/W point on the 1/16 line to the north is 0.15 feet W and 0.01 ft. N of the existing 3/4 x 35 inch square iron bar set for the N reference to the 1/16 cor. in an earlier survey. It was set on the Nly extension of the 1/16 line to the south which bears N 00° 24' 16" E.

A, B, C, D -- R/W points on Easterly line of Hwy. 27 marked with 1 x 36 inch iron pipes, flush, with ID plugs, and also with official highway right of way steel sign posts which are placed on R/W line 1 foot southeasterly from each of our pipes.

E - Replaced existing P-K nail set in previous survey, according to figures shown on R/W plat No. F 07 - 1 (3), dated April 6, 1951. This point marks the most Easterly point of the R/W along the section line.

In 1940-1 Keith Bennett, a young engineer, was employed by Jackson County to restore the section lines and corners in several townships where the county owned considerable land. I believe he did quite a good job of researching the county records and conferring with the county surveyor. He monumented the corners with 2 x 48 in. brass capped pipes and I have always used his corners in my work in those areas. However, the job only required measurements to the nearest link, and, I believe, corrections from the random lines were measured off by compass. For the 1/16 corners he used wooden posts which I have ~~some~~ ~~times~~ adjusted as to alignment and distance unless I know that some surveyor has used them.

Except for a random survey in the SE 1/4 of Section 14 I do not know of any record of any legal subdivision survey in that section. Therefore it was necessary to determine the co-ordinates (location) of the North 1/4 and the E 1/4 corners in order to calculate the section center and to locate the north and east boundaries of the SW 1/4 of the SW 1/4 of Sec. 14.

The three monuments on the north side of Lot 2 have T-type steel fence posts driven about one foot from them with the top leaning over them.

The 1/16 corner north of the SW corner of Sec. 14 requires explanation. We found a 2 in. brass cap pipe, up about 16 in., properly stamped, close to our calculated location. I do not know of any record of how it got there. There were some of the brass cap pipes like Bennett was using left over from his project. After the wood posts began to rot out, the county forest and parks administrator used some of them to replace the posts. This could create confusion. I decided to adjust the pipe to our calculated location, and drove it down to one inch above ground, as we have been doing with others. A guard post is leaning over it. This pipe may be 48 in. long instead of 60 in.

RECEIVED FOR RECORD
Office of Register of Deeds
JUL 15 AM
LYLE V. LARSON, REG.
JACKSON COUNTY, WI.
Vol. 7 Page 35



Ray W. Hurlburt
Ray W. Hurlburt
Registered Land Surveyor
S-398

July 27, 1987

AUG 3 1987