

\$1,440,000

# KIAMICHI MOUNTAIN RANCH

## RECREATIONAL LAND FOR SALE

TBD K-Trail | Honobia Oklahoma

UNITED COUNTRY  
ALTATERRA REALTY & AUCTION  
1875 NE 17<sup>TH</sup> ST, Suite 120  
Paris, Texas 75460  
903.438.2585



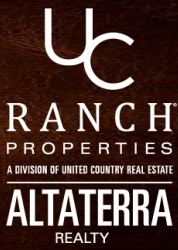
The information contained in this brochure has been obtained from sources believed to be reliable and is believed to be correct, but the sellers, broker and auctioneers do not guarantee its accuracy. All distances, sizes, capacities, and similar measurements and figures are approximate. All information about properties should be independently verified by interested purchasers.

[www.altaterrarealty.com](http://www.altaterrarealty.com)



# KIAMICHI MOUNTAIN RANCH

TBD K-Trail | Honobia OK



## PROPERTY SUMMARY



## OFFERING SUMMARY

Sale Price: \$1,440,000

Lot Size: 600 ± Acres

Zoning: Agricultural



## UNITED COUNTRY ALTATERRA REALTY & AUCTION

1875 NE 17<sup>TH</sup> ST, Suite 120  
Paris, Texas 75460  
903.438.2585



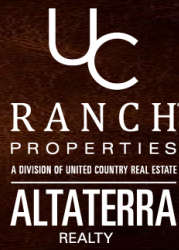
The information contained in this brochure has been obtained from sources believed to be reliable and is believed to be correct, but the sellers, broker and auctioneers do not guarantee its accuracy. All distances, sizes, capacities, and similar measurements and figures are approximate. All information about properties should be independently verified by interested purchasers.

[www.altaterrarealty.com](http://www.altaterrarealty.com)



# KIAMICHI MOUNTAIN RANCH

TBD K-Trail | Honobia OK



## DESCRIPTION



600± acres of secluded hunting & recreational land For Sale in the Northern part of Pushmataha County! Located in the beautiful Kiamichi Mountains between Albion and Honobia, this property is just a short drive away from the Indian Highway. This hunting & recreational tract has plenty of areas for building off grid cabins with breath taking views. The K-Trail provides a good navigation point to get you to the many newly built roads throughout the property. This prime recreational piece has the Long Creek running through the middle of the property and is the home to plenty of wildlife. It is approximately 3.5 hours from Dallas, 3 hours from Tulsa, 3.5 hours from OKC and an hour and 40 minutes from Ft. Smith Arkansas.

UNITED COUNTRY  
ALTATERRA REALTY & AUCTION

1875 NE 17<sup>TH</sup> ST, Suite 120  
Paris, Texas 75460  
903.438.2585



The information contained in this brochure has been obtained from sources believed to be reliable and is believed to be correct, but the sellers, broker and auctioneers do not guarantee its accuracy. All distances, sizes, capacities, and similar measurements and figures are approximate. All information about properties should be independently verified by interested purchasers.

[www.altaterrarealty.com](http://www.altaterrarealty.com)

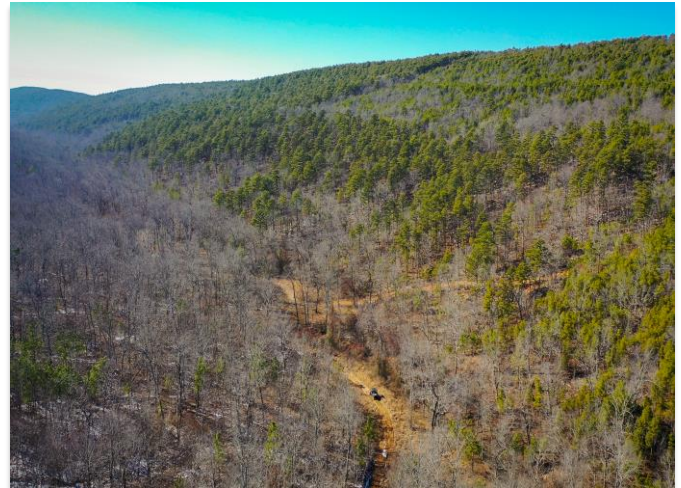


# KIAMICHI MOUNTAIN RANCH

TBD K-Trail | Honobia OK

PROPERTY PHOTOS

UC  
RANCH  
PROPERTIES  
A DIVISION OF UNITED COUNTRY REAL ESTATE  
ALTATERRA  
REALTY



UNITED COUNTRY  
ALTATERRA REALTY & AUCTION

1875 NE 17<sup>TH</sup> ST, Suite 120  
Paris, Texas 75460  
903.438.2585



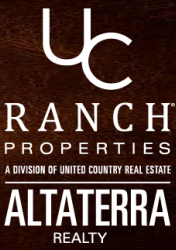
The information contained in this brochure has been obtained from sources believed to be reliable and is believed to be correct, but the sellers, broker and auctioneers do not guarantee its accuracy. All distances, sizes, capacities, and similar measurements and figures are approximate. All information about properties should be independently verified by interested purchasers.

[www.altaterrarealty.com](http://www.altaterrarealty.com)

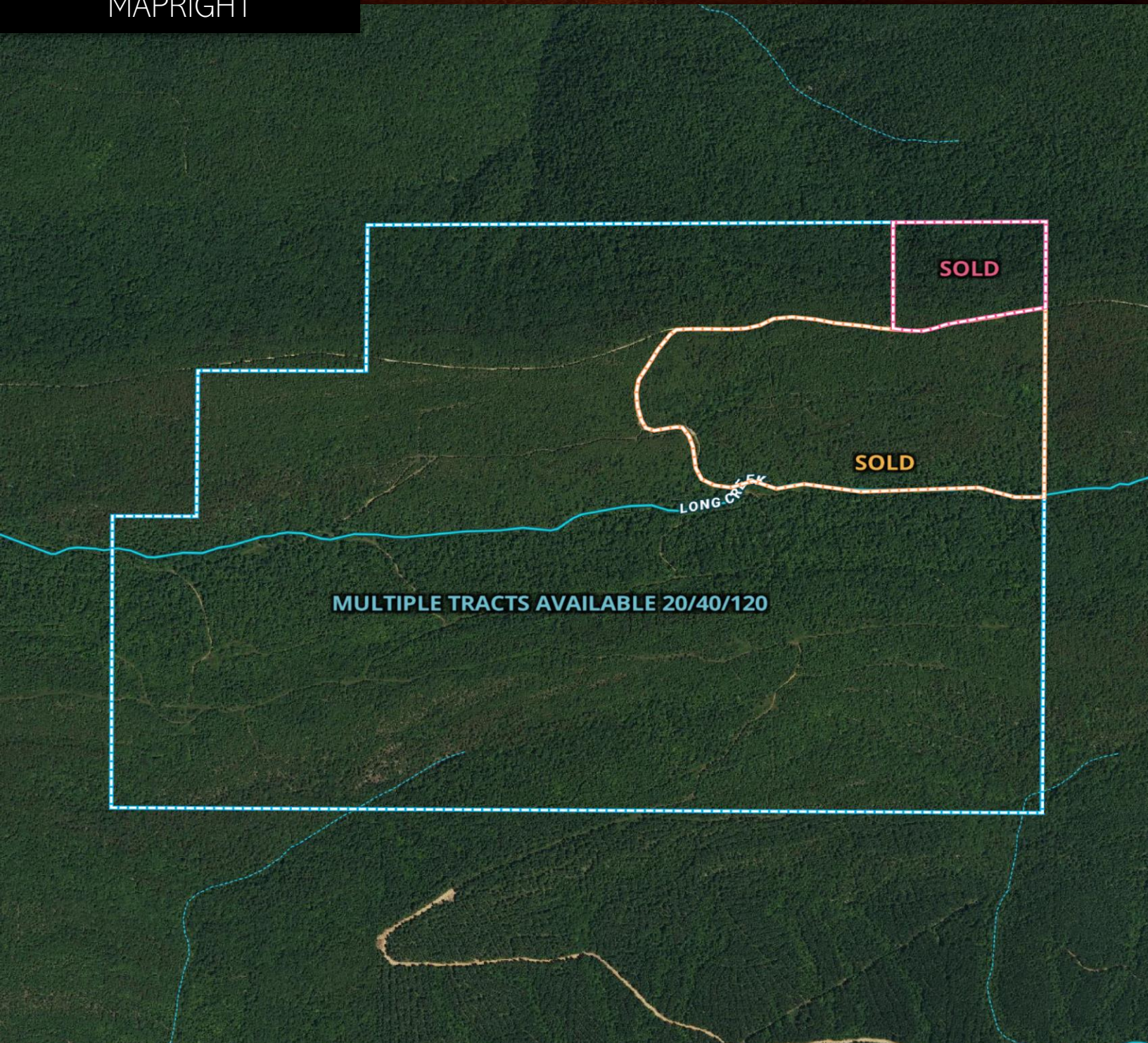


# KIAMICHI MOUNTAIN RANCH

TBD K-Trail | Honobia OK



MAPRIGHT



UNITED COUNTRY  
ALTATERRA REALTY & AUCTION  
1875 NE 17<sup>TH</sup> ST, Suite 120  
Paris, Texas 75460  
903.438.2585



The information contained in this brochure has been obtained from sources believed to be reliable and is believed to be correct, but the sellers, broker and auctioneers do not guarantee its accuracy. All distances, sizes, capacities, and similar measurements and figures are approximate. All information about properties should be independently verified by interested purchasers.

[www.altaterrarealty.com](http://www.altaterrarealty.com)



# KIAMICHI MOUNTAIN RANCH

TBD K-Trail | Honobia OK

## APPENDIX

### AltaTerra Realty & Auction

Kam Harden

Oklahoma Sales Agent

Cell:

(918) 415-4867

Email:

kharden@altaterrarealty.com



As a native to southeast Oklahoma, Kam grew up on a working cattle ranch in Daisy, Ok. where She helped her parents along with her brother and sister feeding cattle, hauling hay, raising show calves and sheep. Armed with a bachelor's degree in fashion merchandising and business, Kam has a variety of experience in construction, where she worked as a welder in paper mills and gas plants. She also has experience as a secretary, janitor, a seamstress, assisting her brother at auctions and a postal worker. She has volunteered as a firefighter, emergency medical responder and board member. As well as serving on the Daisy, Oklahoma auxiliary committee and as a coordinator for the Daisy community yard sale. In her free time Kam enjoys spending time with her adorable grandchildren and family. She also enjoys tending to her flower beds, spending time in the mountains sewing and decorating. Kam Is a country girl at heart and has a wealth of knowledge to help clients looking for land, ranches and country homes. She has the heart of a servant and works tirelessly to ensure those around her are well taken care of. If you're looking for a country home or land in southeastern Oklahoma, you can rest easy knowing Kam will work diligently to help you fulfill your dream.

UNITED COUNTRY  
ALTATERRA REALTY & AUCTION

1875 NE 17<sup>TH</sup> ST, Suite 120  
Paris, Texas 75460  
903.438.2585



The information contained in this brochure has been obtained from sources believed to be reliable and is believed to be correct, but the sellers, broker and auctioneers do not guarantee its accuracy. All distances, sizes, capacities, and similar measurements and figures are approximate. All information about properties should be independently verified by interested purchasers.

[www.altaterrarealty.com](http://www.altaterrarealty.com)