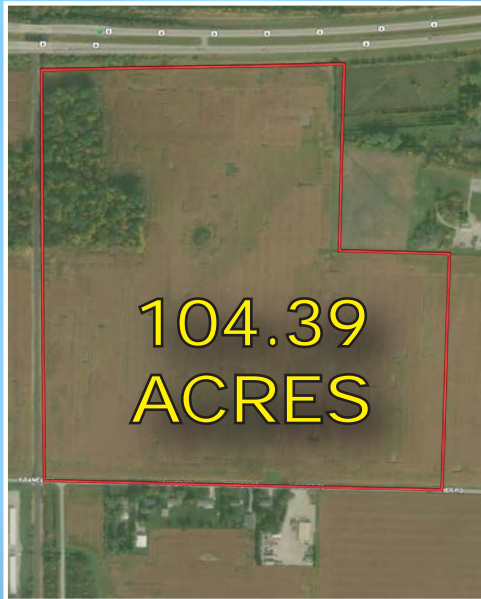


# For Sale

# WOOD COUNTY GRAIN FARMS



104.39 ACRES

KRAMER ROAD  
BOWLING GREEN



80 ACRES

HAMMANSBURG ROAD  
NORTH BALTIMORE



77.9 ACRES

POTTER ROAD  
CUSTAR

3  
FARMS  
262.29  
TOTAL ACRES



## WILSON NATIONAL LLC

A REAL ESTATE & AUCTION GROUP

Mark Wilson 937.402.1961  
Brandon Wilson 937.763.1993

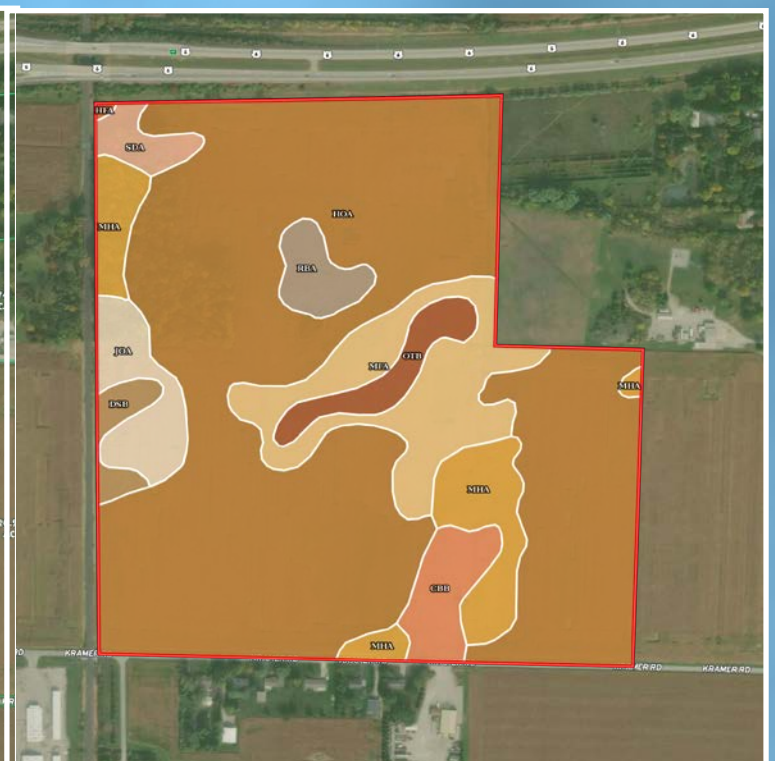
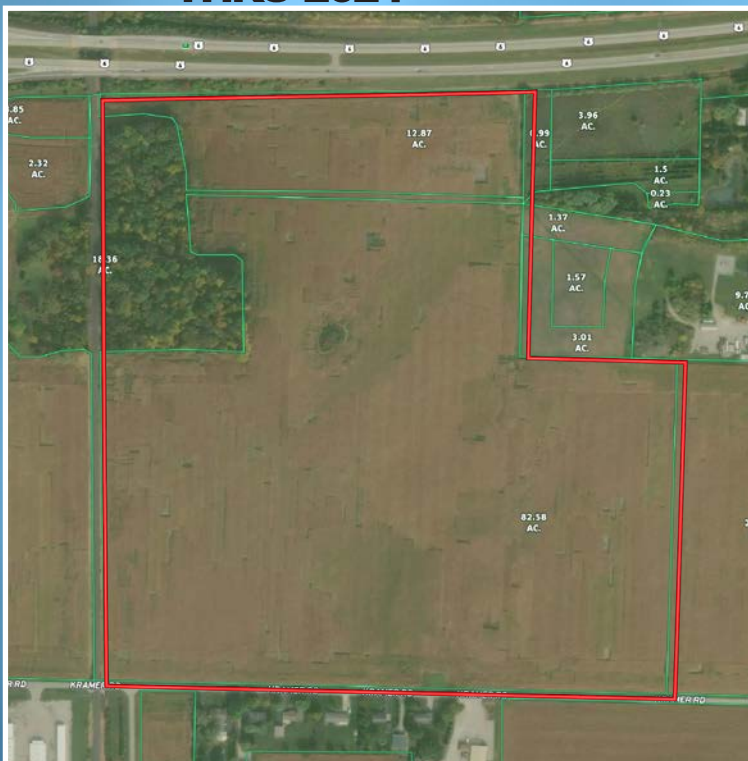
800.450.3440 | [www.wilnat.com](http://www.wilnat.com)

# 104.39 ACRES

## KRAMER ROAD BOWLING GREEN

From Rt. 6 west of I-75 take N.  
Findley Pike south to Kramer  
Rd. go east to property on left.  
Next to railroad.

VACANT LAND  
95.4 ACRES  
TILLABLE  
PREDOMINATELY  
HOYTVILLE SOIL  
EXCELLENT LOCATION  
WITH MANY  
POTENTIAL USES  
ZONED C3  
HIGHWAY/COMMERCIAL  
2244' FRONTAGE  
ON KRAMER ROAD  
1657.92' FRONTAGE  
ALONG RT. 6  
PARCEL #  
C11511310000023500  
TAXES:  
\$2,756.54 PER YEAR  
ASKING PRICE \$1,029,000  
LAND IS LEASED FOR  
\$300 PER ACRE  
THRU 2024



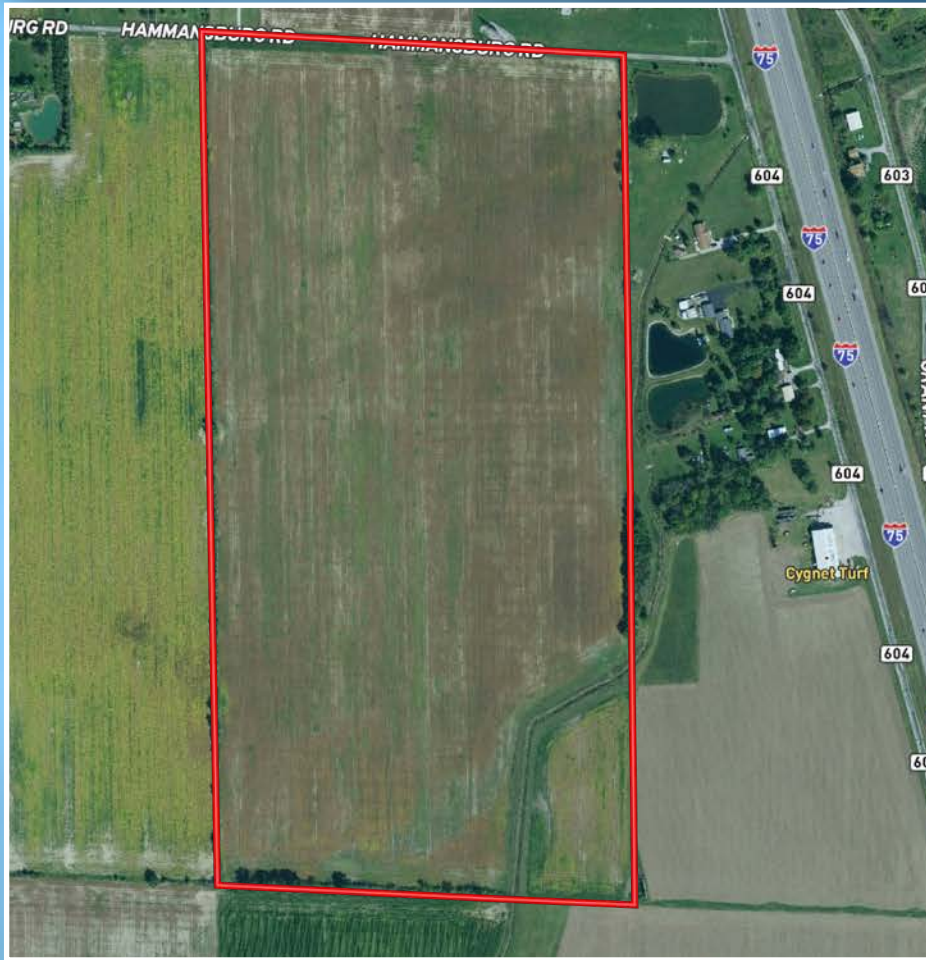


# 80 ACRES

## HAMMANSBURG ROAD

### NORTH BALTIMORE

From I-75 take Exit 171, go west on Cygnet Rd to left on Rudolph Rd to left on Hammansburg Rd to property on right.



VACANT LAND  
78 ACRES  
TILLABLE

NAPPANEE LOAM &  
HOYTVILLE CLAY LOAM  
SOILS  
INVESTMENT  
GRADE LAND

1341.12' FRONTAGE ON  
HAMMANSBURG ROAD

PARCEL #  
F22310130000009000

TAXES:  
\$2,198 PER YEAR

ASKING PRICE \$788,000  
LAND IS LEASED FOR  
\$275 PER ACRE  
THRU 2024





# 77.9 ACRES

## POTTER ROAD, CUSTAR

From N. Baltimore go north to  
Needles Road, go west to corner  
of Needles and Potter Roads.  
Land is on NE corner.

VACANT LAND  
71.8 ACRES  
TILLABLE  
PREDOMINATELY  
HOYTVILLE SOIL  
INVESTMENT  
GRADE LAND  
2650.56' FRONTAGE  
ON POTTER ROAD  
971.52' FRONTAGE  
ALONG NEEDLES ROAD  
PARCEL #'S

F22310200000006000

F22310200000007000

TAXES:

\$2,635.52 PER YEAR

ASKING PRICE \$767,500

LAND IS LEASED FOR

\$275 PER ACRE

THRU 2024

