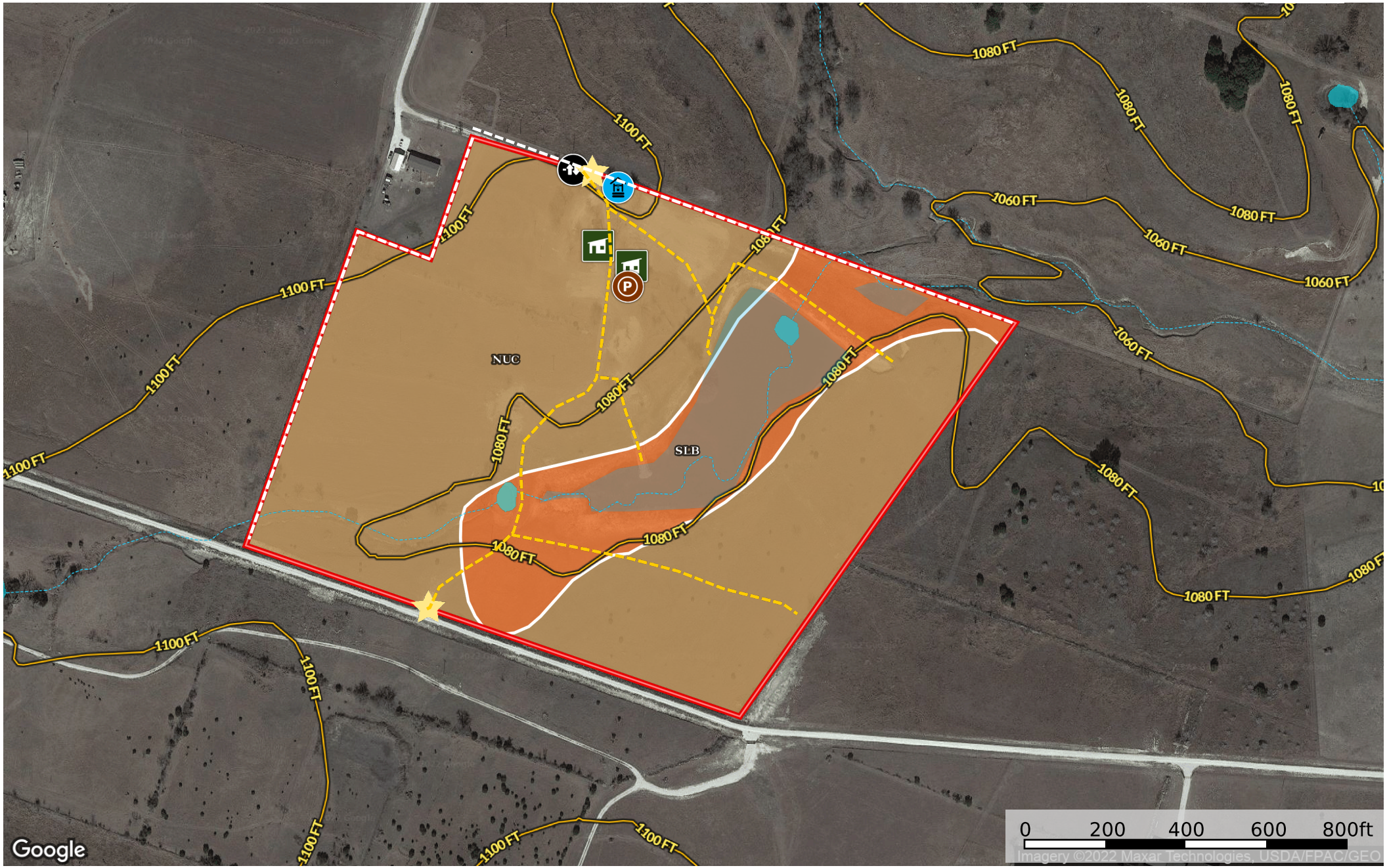


Hill - Pearl Ranch CR 80

Coryell County, Texas, 36.74 AC +/-



- ★ Entrance CR 80
- ★ Entrance PR 1391
- ⊕ Gate
- Ⓟ Pens
- 🏠 Shed / Shack
- 🏠 Well
- Road / Trail
- Fence
- Tour
- 🟦 Pond / Tank
- 🔺 Boundary
- Stream, Intermittent
- River/Creek
- 🟦 Water Body

|  Boundary 37.0 ac

SOIL CODE	SOIL DESCRIPTION	ACRES	%	CPI	NCCPI	CAP
NuC	Nuff very stony silty clay loam, 2 to 6 percent slopes	28.47	76.95	0	28	6s
SIB	Slidell silty clay, 0 to 2 percent slopes	8.53	23.05	0	42	3e
TOTALS		37.0(*)	100%	-	31.23	5.31









(*) Total acres may differ in the second decimal compared to the sum of each acreage soil. This is due to a round error because we only show the acres of each soil with two decimal.

Capability Legend

Increased Limitations and Hazards

Decreased Adaptability and Freedom of Choice Users

Land, Capability

								
	1	2	3	4	5	6	7	8
'Wild Life'	•	•	•	•	•	•	•	•
Forestry	•	•	•	•	•	•	•	
Limited	•	•	•	•	•	•	•	
Moderate	•	•	•	•	•	•		
Intense	•	•	•	•	•			
Limited	•	•	•	•				
Moderate	•	•	•					
Intense	•	•						
Very Intense	•							

Grazing Cultivation

(c) climatic limitations (e) susceptibility to erosion

(s) soil limitations within the rooting zone (w) excess of water