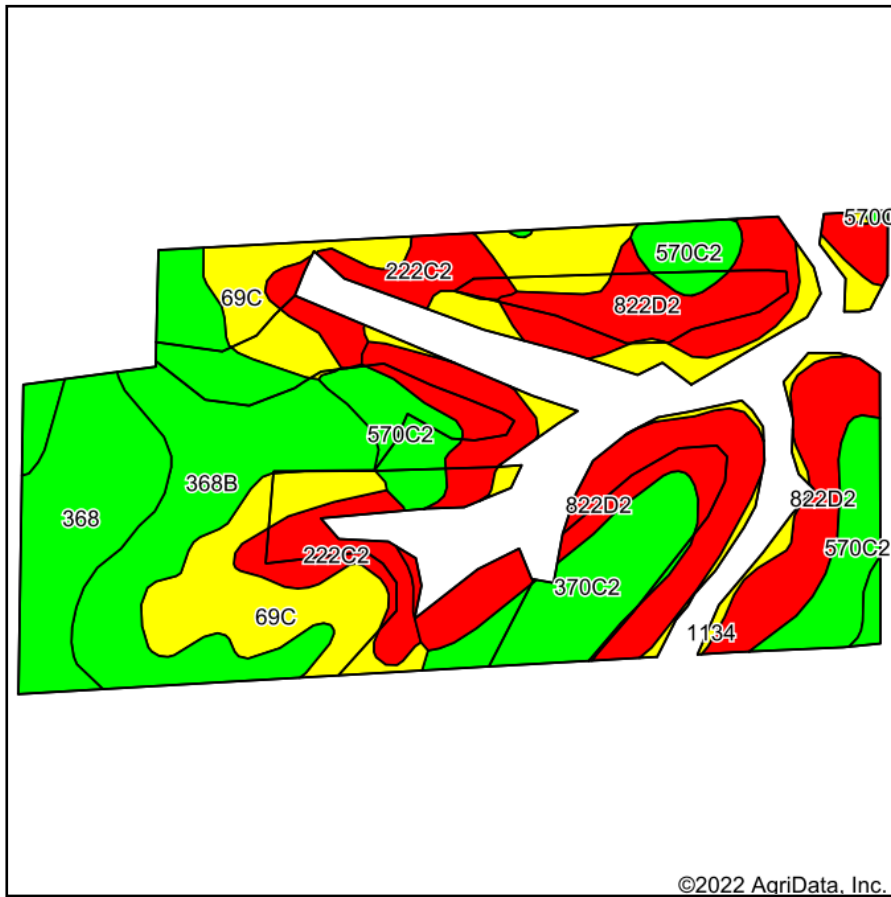
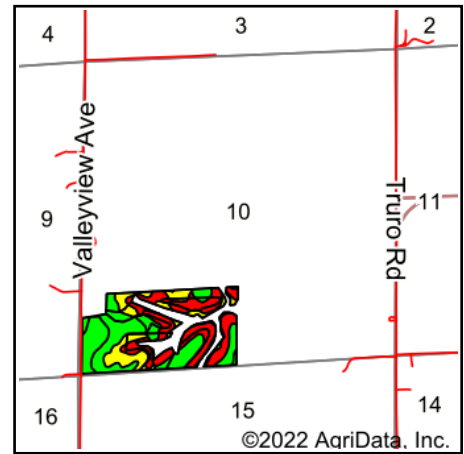


Soils Map



Soils data provided by USDA and NRCS.



State: **Iowa**
 County: **Madison**
 Location: **10-74N-26W**
 Township: **Ohio**
 Acres: **62.73**
 Date: **6/8/2022**



Maps Provided By:



Area Symbol: IA121, Soil Area Version: 25

Code	Soil Description	Acres	Percent of field	CSR2 Legend	Non-Irr Class *c	CSR2**	*n NCCPI Overall	*n NCCPI Corn	*n NCCPI Small Grains	*n NCCPI Soybeans
822D2	Lamoni clay loam, 9 to 14 percent slopes, eroded	16.93	27.0%		IVe	7	58	58	53	41
368B	Macksburg silty clay loam, 2 to 5 percent slopes	11.60	18.5%		Ile	89	87	87	79	78
69C	Clearfield silty clay loam, dissected till plain, 5 to 9 percent slopes	9.70	15.5%		IIIw	59	75	75	72	67
368	Macksburg silty clay loam, 0 to 2 percent slopes	6.03	9.6%		Iw	93	87	87	78	79
570C2	Nira silty clay loam, dissected till plain, 5 to 9 percent slopes, eroded	5.87	9.4%		IIIe	81	87	87	70	71
222C2	Clarinda silty clay loam, 5 to 9 percent slopes, eroded	4.95	7.9%		IVw	38	59	59	51	49
370C2	Sharpsburg silty clay loam, 5 to 9 percent slopes, eroded	4.55	7.3%		IIIe	80	84	84	69	67
1134	Colo, frequently flooded-Ely silty clay loams, gullied, 2 to 5 percent slopes	3.10	4.9%		Ile	59	45	7	7	45
Weighted Average						2.92	55.7	*n 72.8	*n 70.9	*n 63.5

**IA has updated the CSR values for each county to CSR2.

*n: The aggregation method is "Weighted Average using all components"

*c: Using Capabilities Class Dominant Condition Aggregation Method

Soils data provided by USDA and NRCS.