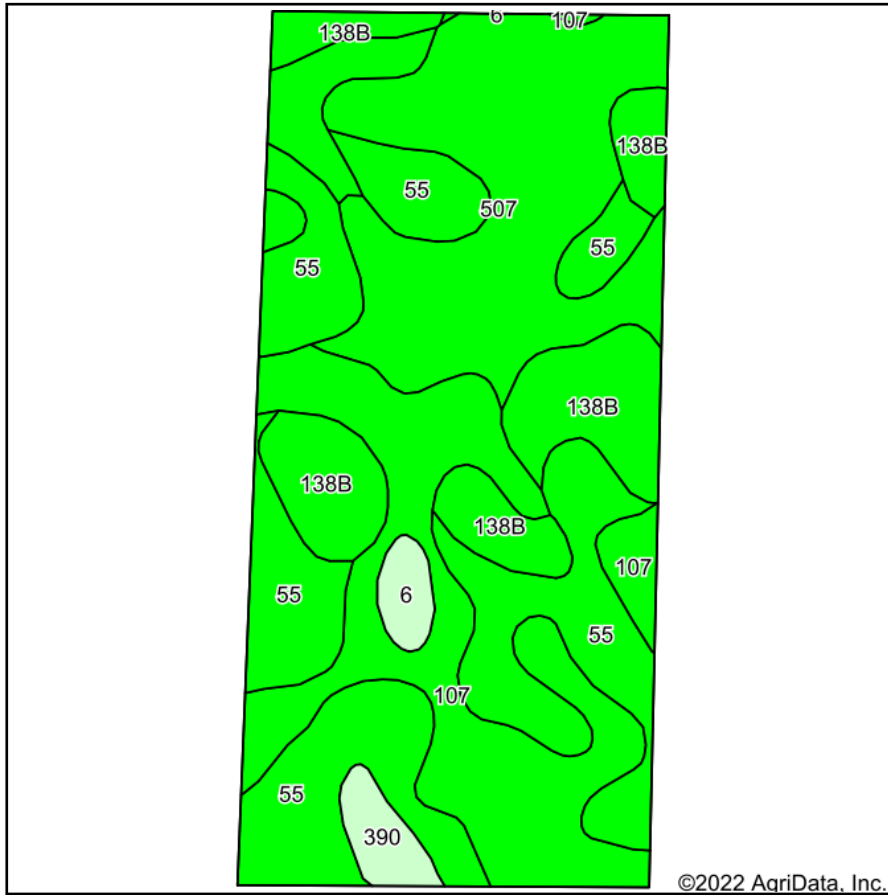
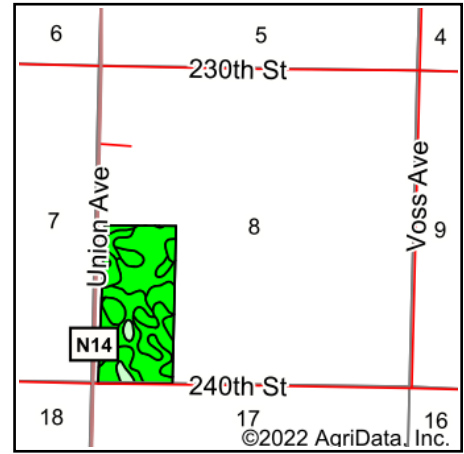


Soils Map



Soils data provided by USDA and NRCS.



State: **Iowa**
 County: **Sac**
 Location: **8-88N-35W**
 Township: **Cedar**
 Acres: **73**
 Date: **3/11/2022**



Maps Provided By:



Area Symbol: IA161, Soil Area Version: 29

Code	Soil Description	Acres	Percent of field	CSR2 Legend	Non-Irr Class *c	CSR2**	CSR
55	Nicollet clay loam, 1 to 3 percent slopes	22.84	31.3%		Iw	89	85
107	Webster clay loam, 0 to 2 percent slopes	19.44	26.6%		IIw	86	80
507	Canisteo clay loam, 0 to 2 percent slopes	17.44	23.9%		IIw	84	75
138B	Clarion loam, 2 to 6 percent slopes	10.82	14.8%		Ile	89	77
390	Waldorf silty clay loam, 0 to 2 percent slopes	1.42	1.9%		IIw	69	65
6	Okoboji silty clay loam, 0 to 1 percent slopes	1.04	1.4%		IIIw	59	55
Weighted Average					1.70	86.2	79.3

**IA has updated the CSR values for each county to CSR2.

*c: Using Capabilities Class Dominant Condition Aggregation Method

Soils data provided by USDA and NRCS.

PARCEL # 5 - SOIL MAP