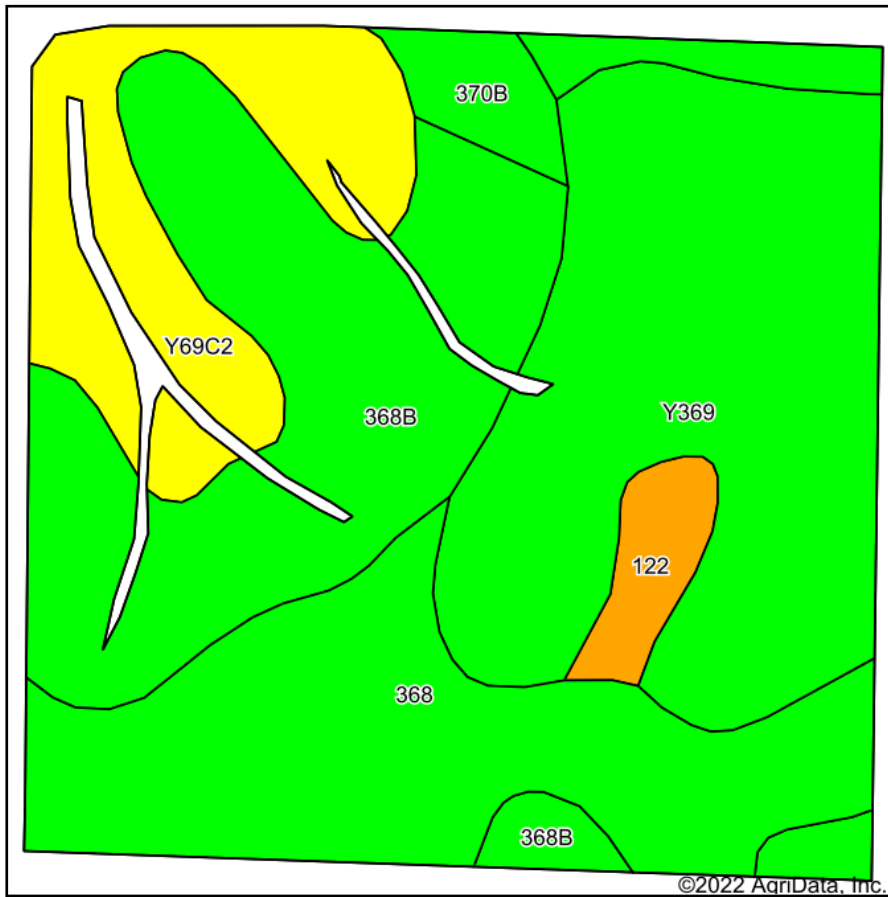
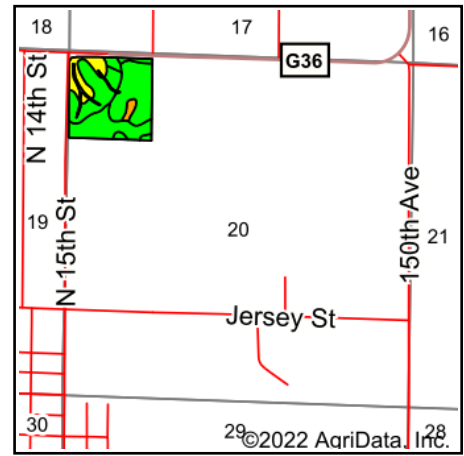


Soils Map



Soils data provided by USDA and NRCS.



State: **Iowa**
 County: **Warren**
 Location: **20-76N-23W**
 Township: **Lincoln**
 Acres: **36.32**
 Date: **6/1/2022**



Maps Provided By:



Area Symbol: IA181, Soil Area Version: 26								
Code	Soil Description	Acres	Percent of field	CSR2 Legend	Non-Irr Class *c	CSR2**	CSR	*n NCCPI Overall
Y369	Winterset silty clay loam, 0 to 2 percent slopes	11.09	30.5%		IIw	83		78
368B	Macksburg silty clay loam, 2 to 5 percent slopes	9.78	26.9%		Ile	89	90	87
368	Macksburg silty clay loam, 0 to 2 percent slopes	9.01	24.8%		Iw	93	95	87
Y69C2	Clearfield silty clay loam, dissected till plain, 5 to 9 percent slopes, eroded	4.59	12.6%		IIIw	56		67
122	Sperry silt loam, 0 to 1 percent slopes	0.94	2.6%		IIIw	36	63	80
370B	Sharpsburg silty clay loam, 2 to 5 percent slopes	0.91	2.5%		Ile	91	87	93
Weighted Average					1.90	82.7	*-	*n 81.7

**IA has updated the CSR values for each county to CSR2.

*- CSR weighted average cannot be calculated on the current soils data, use prior data version for csr values.

*n: The aggregation method is "Weighted Average using all components"

*c: Using Capabilities Class Dominant Condition Aggregation Method

Soils data provided by USDA and NRCS.