

TESLASH RANCH

EXCLUSIVELY OFFERED BY:



MICHAEL GREGORY JR
REAL ESTATE

(505)-603-6711

NMRE.com

The E Slash Ranch is a working cow ranch that is located approximately 45 miles east of Las Vegas, New Mexico via Highway 104

- 7,207 +/- Deeded Acres
- 2,871 +/- State Lease
- 681 +/- BLM
- 10,759 +/- Total Acres

Offered at:

\$4,324,200





Topography & Climate

The E Slash ranch is located just below the Corazon Hill where the plains meet the Canadian Escarpment. The ranch boasts a combination of native grass lands accompanied by scattered cedar, and mesquite trees throughout. Multiple scenic canyons can also be found throughout the ranch along with many natural springs that are dotted with cottonwood trees. Elevations on the ranch vary but are primarily around 5,000 feet, with the Cerro de Corazon peak reaching almost 6,000 feet. Average rainfall for this area is roughly 20 inches annually.





Water

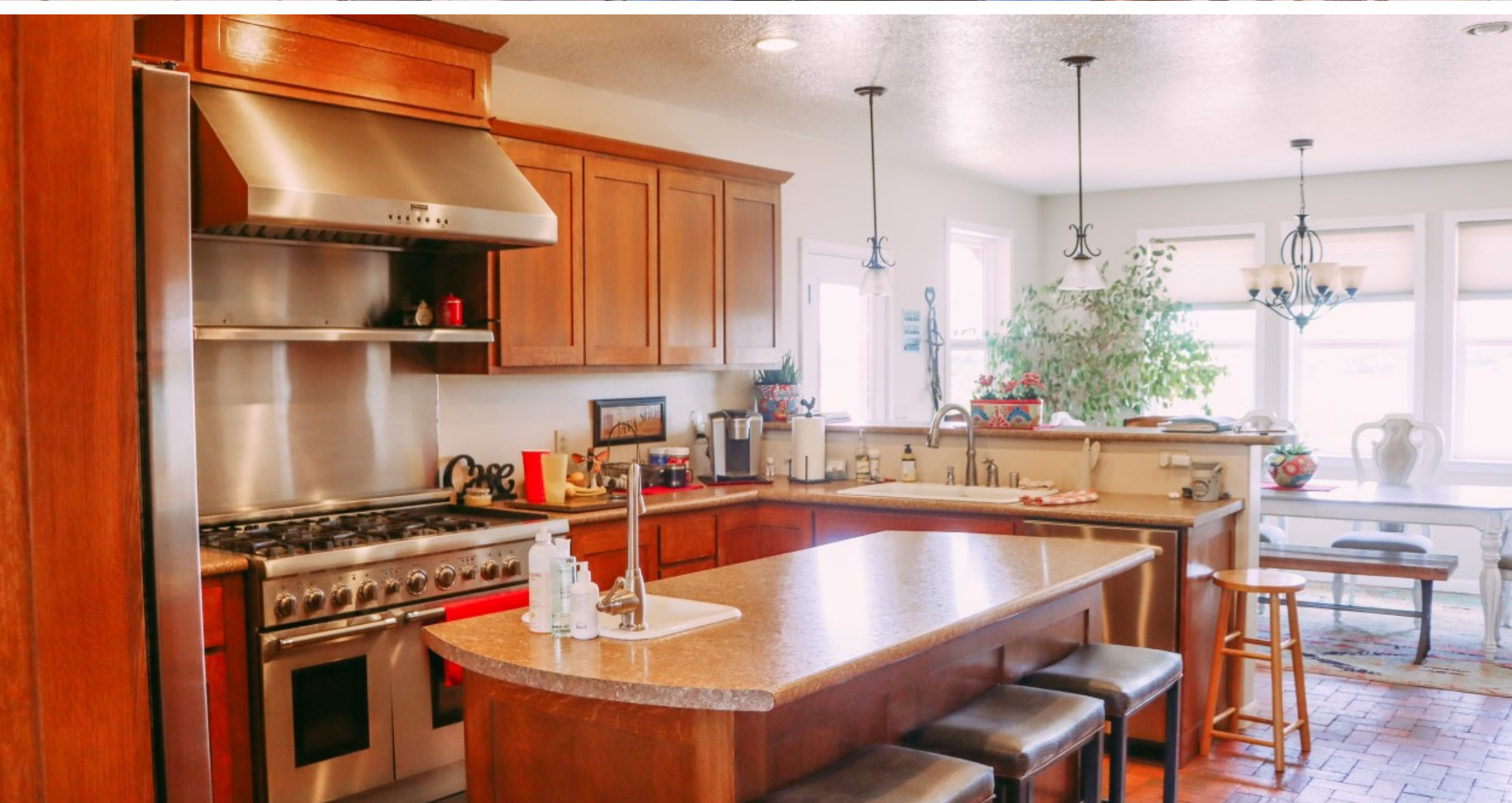


The E Slash Ranch is well watered with 5 solar wells, 4 submersible wells, and 3 windmills. There are 18 livestock drinkers supplied by pipeline along with two 30,000 gallon water storage tanks. Multiple dirt tanks are also scattered throughout the ranch.

Improvements

The headquarters is complemented by a beautiful 3-bedroom 2 bath, 2,570 +/- Sq Ft home and an oversized garage.







Improvements

- 3,500 Sq. Ft. +/- Insulated Shop
- Newly built horse barn with storage container, tack room & hay storage





Improvements

- The foreman's house is 3 bedrooms, 1 bath, 1,550 + - Sq Ft. with a 2-car garage (dirt floor)
- Neighboring the foreman's house is a 2-bedroom 1 bath 1,049 + - Sq Ft. bunk house. There is also a 1,280 + - Sq Ft. barn along with two 40-foot storage containers.





Cattle Working Facilities



There are 2 sets of working pens on the ranch. The shipping pens have a 10,000 lb set of scales.



Map

