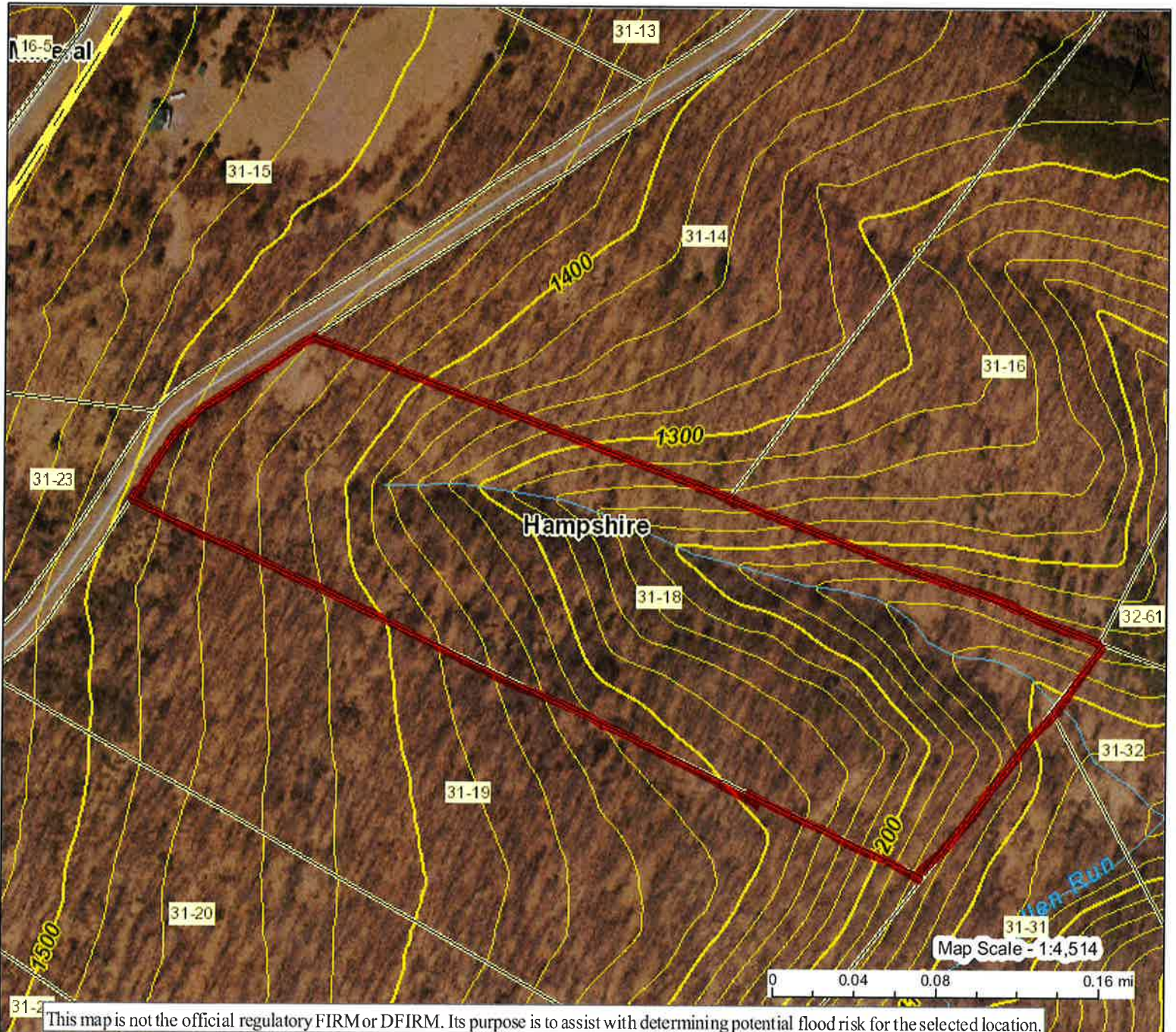


194 bluffs



This map is not the official regulatory FIRM or DFIRM. Its purpose is to assist with determining potential flood risk for the selected location.

<div> <div>H</div> <div>I</div> <div>G</div> <div>H</div> <div>R</div> <div>I</div> <div>S</div> <div>K</div> </div> <div> <div>Regulatory Floodway</div> <div>Zone AE 1-Percent-Annual-Chance Flood Hazard Area With Base Flood Elevation (BFE)</div> <div>Zone A 1-Percent-Annual-Chance Flood Hazard Area Without BFE (may have Advisory Flood Heights)</div> <div>Advisory 1-Percent-Annual-Chance Future Conditions (High Risk Advisory Flood Zones)</div> </div>	<div> <div>Flood Info Location</div> <div>Map created on 6/20/2022</div> </div>
<div> <div>Download the Full Legend for all flood tool symbols</div> <div>https://www.mapwv.gov/flood/map/docs/wv_flood_tool_legend.pdf</div> <div> <div>Disclaimer:</div> <div>The online map is for use in administering the National Flood Insurance Program. It does not necessarily identify all areas subject to flooding, particularly from local drainage sources of small size. Refer to the official Flood Insurance Study (FIS) for detailed flood elevation data in flood profiles and data tables. WV Flood Tool (https://www.MapWV.gov/flood) is supported by FEMA, WV NFIP Office, and WV GIS Technical Center.</div> </div> </div>	<div> <div>User Notes</div> <div> <div>Flood Hazard Area</div> <div>Location is NOT WITHIN identified flood hazard area, but within 75 feet of an identified flood hazard area.</div> </div> <div> <div>Flood Zone</div> <div>Near Flood Zone</div> </div> <div> <div>Stream</div> <div></div> </div> <div> <div>Watershed (HUC8)</div> <div>Cacapon-Town (2070003)</div> </div> <div> <div>Flood Height</div> <div>Flood Height 6a N/A</div> </div> <div> <div>Water Depth</div> <div></div> </div> <div> <div>Elevation</div> <div>888.8 ft (Source: FEMA 2016-17) (NAVD88)</div> </div> <div> <div>Community & ID</div> <div>Hampshire County (ID: 540226)</div> </div> <div> <div>FEMA Map & Date</div> <div>54027C0315C; Effective Date: 11/7/2002</div> </div> <div> <div>Location (lat, long)</div> <div>(39.270571, -78.469861) (WGS84)</div> </div> <div> <div>Parcel ID</div> <div>14-02-0019-0123-0000</div> </div> <div> <div>E-911 Address</div> <div>3385 OLD MILL RD, Capon Bridge, WV, 26711</div> </div> </div>

at Law
Overpass Rd
the W

son Creek Mountain Drive

in Family Trust
312 FV 182
16 Parcel 05

