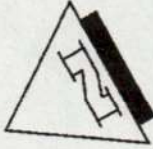


LEGEND

--- = BUFFER ZONES FOR MITIGATION. RETAIN TREES AND VEGETATION WITHIN BUFFER ZONES. WIDTH VARIES AS SHOWN ON PLAN. MITIGATION BUFFER ZONES WILL BE RESTRICTION IN DEED OF EFFECTED LOTS.

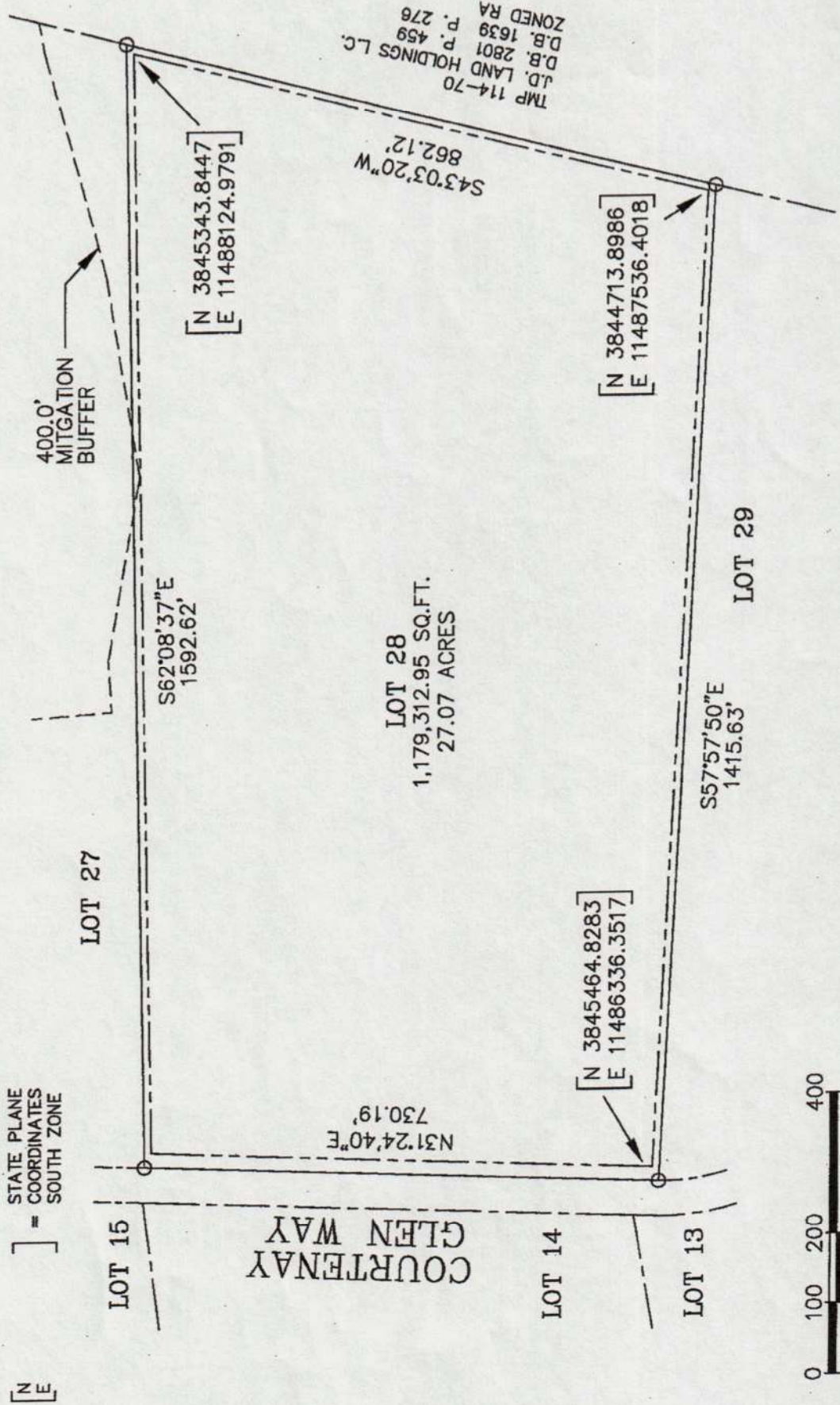
--- = ELECTRIC UTILITY EASEMENTS 20.0' ALONG ALL ROAD FRONTAGES 10.0' ALONG ALL SIDE AND REAR LINES

[N] = STATE PLANE COORDINATES SOUTH ZONE

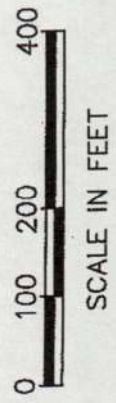


STATE PLANE COORDINATE MERIDIAN

“THE FARMS AT TURKEY RUN”
 SUBDIVISION PLAT
 TAX MAP 114, PARCEL 67A, LOT 28
 SCOTTSVILLE MAGISTERIAL DISTRICT
 ALBEMARLE COUNTY, VIRGINIA
 FEBRUARY 5, 2008

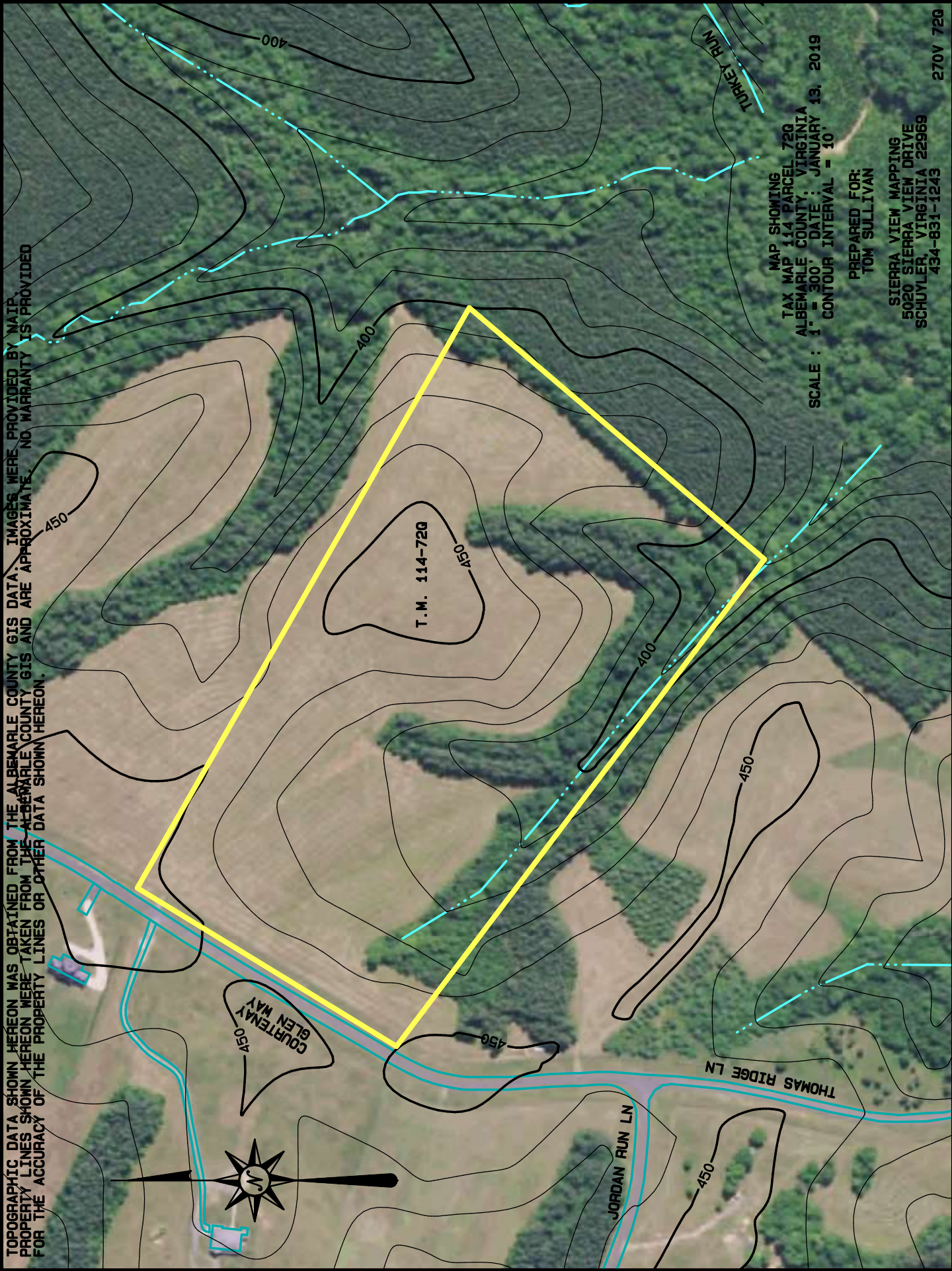


TMP 114-70
 J.D. LAND HOLDINGS L.C.
 D.B. 2801 P. 459
 D.B. 1639 P. 276
 ZONED RA



SCALE IN FEET

TOPOGRAPHIC DATA SHOWN HEREON WAS OBTAINED FROM THE ALBEMARLE COUNTY GIS DATA. IMAGES WERE PROVIDED BY NAIP. PROPERTY LINES SHOWN HEREON WERE TAKEN FROM THE ALBEMARLE COUNTY GIS AND ARE APPROXIMATE. NO WARRANTY IS PROVIDED FOR THE ACCURACY OF THE PROPERTY LINES OR OTHER DATA SHOWN HEREON.



MAP SHOWING
TAX MAP 114 PARCEL 720
ALBEMARLE COUNTY, VIRGINIA
SCALE : 1" = 300' DATE : JANUARY 13, 2019
CONTOUR INTERVAL = 10'

PREPARED FOR:
TOM SULLIVAN
SIERRA VIEW MAPPING
5020 SIERRA VIEW DRIVE
SCHUYLER, VIRGINIA 22969
434-831-1243

270V 720