



FARM & RANCH

# AMAZING CATTLE AND RECREATIONAL RANCH

TBD Nash Lane –Jacksboro, TX



STEPHEN  
REICH GROUP  
WILLIAMS TREW REAL ESTATE

Williamstrew<sup>☆</sup>  
A DIVISION OF EBBY HALLIDAY REAL ESTATE, INC.

LISTED BY **STEPHEN REICH GROUP** OF WILLIAMS TREW REAL ESTATE

# PROPERTY SUMMARY

## DESCRIPTION

Amazing cattle and recreational ranch tucked away at the very end of a Private Road. Elevations ranging from 11140 to 1240 provide vista views in every direction. There are 14 ponds that are stocked with bass and catfish and are perfect habitat for the waterfowl enthusiast. Good cover provides ample habitat for deer, turkey and wild hogs. This ranch is fenced and cross fenced and offers an abundance of native grasses, and the abundance of water is perfect for your cattle operation. Ranch is surrounded by large family ranches, and makes you feel like you are far far away from any civilization, yet it is conveniently located less that 1.5 hour from downtown Fort Worth.

## LOCATION

CITY	Jacksboro	List Price	\$2.732.345
County	Jack	Lot Size	496.79 acres
Schools	Perrin-Whitt ISD	Utilities	Electricity Available
Driving Directions	From Hwy 281, go west on FM 2210. Nash Road is a private road, and this property is at the end of Nash Road.		

## OFFER SUMMARY

## HIGHLIGHTS

- 496.79 ACRES
- 11,140 TO 1,240 ELEVATION RANGES
- 14 STOCKED PONDS
- FENCED & CROSS FENCED
- ELECTRIC AVAILABLE
- 1.5 HOURS FROM DOWNTOWN FT. WORTH

## LISTING PRESENTED BY:



**STEPHEN REICH**  
**817-597-8884**  
stephen.reich@williamstrew.com



**PROPERTY WEBSITE LINK:**  
**[stephenreichgroup.com/20083093](http://stephenreichgroup.com/20083093)**



**PARKER COUNTY OFFICE**  
400 Shops Boulevard, Ste. 200  
Willow Park, TX 76087

**FARM & RANCH • RESIDENTIAL • COMMERCIAL-DEVELOPMENT • LAND**

# PROPERTY PHOTOS

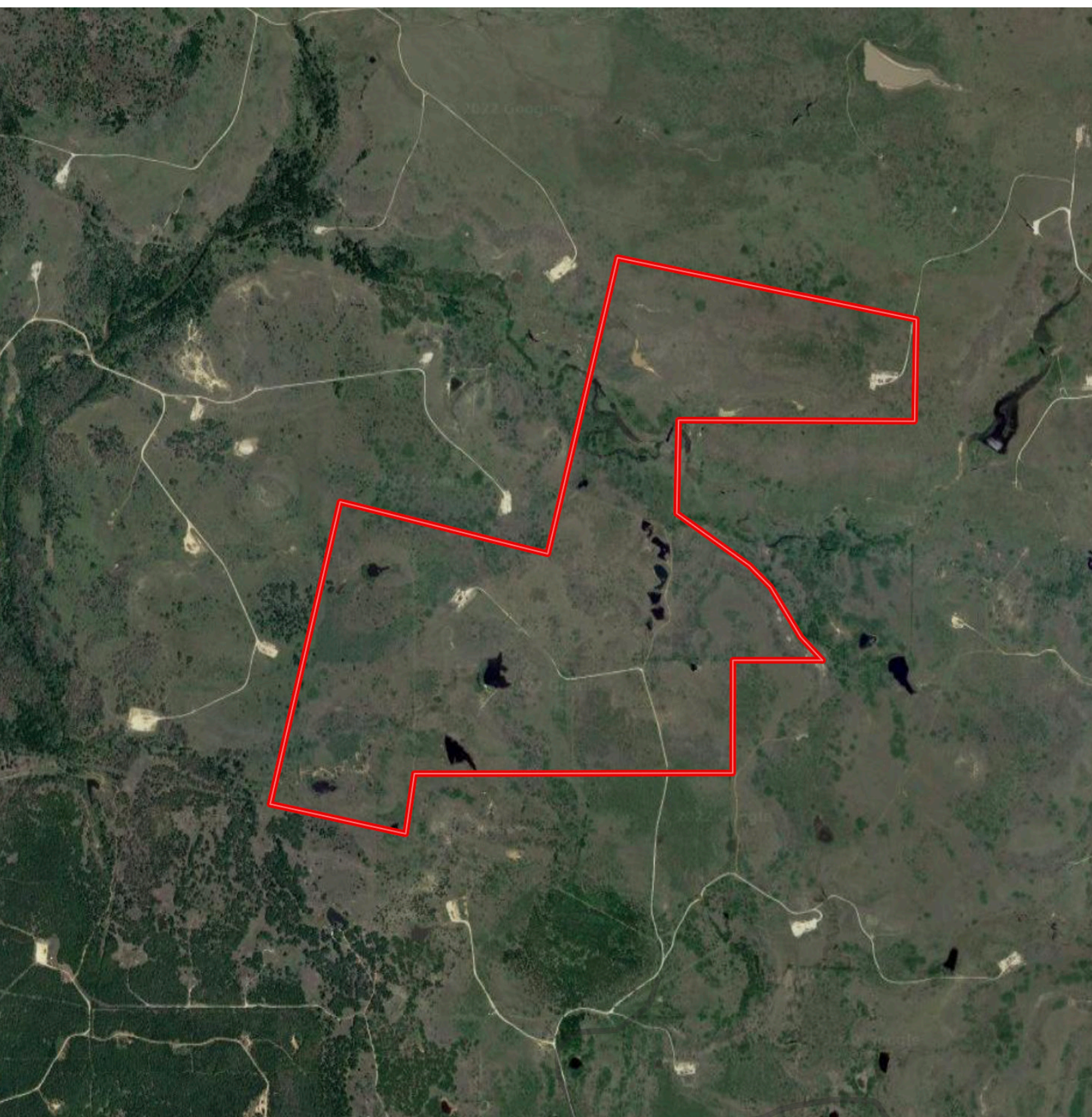


PROPERTY PHOTOS



# AERIAL MAP

---



STEPHEN REICH – 817.597.8884



WilliamsTrew   
A DIVISION OF EBBY HALLIDAY REAL ESTATE, INC.

This topographic map displays a mountainous region with a red boundary line. The map features contour lines indicating elevations from 1120 FT to 1250 FT. A blue line, possibly a stream or road, runs through the center. The word 'NULL' is visible in the upper right corner. The red boundary outlines a specific area, likely a property or study site, which includes several peaks and valleys. The terrain is rugged with many peaks and valleys. A blue line, likely a stream or road, runs through the center of the map. The word 'NULL' is visible in the upper right corner.