

Stone House

Main Floor

Sun room = 518 sqft

Master BR = 288 sqft

Hall in Closets = 96 sqft

Master Bath = 255 sqft

Bedroom 1 = 182 sqft

Living Room = 322 sqft

Kitchen = 792 sqft

Foyer = 99 sqft

Bedroom 2 = 143 sqft

Bathroom 1 = 108 sqft

Bathroom 2 = 60 sqft

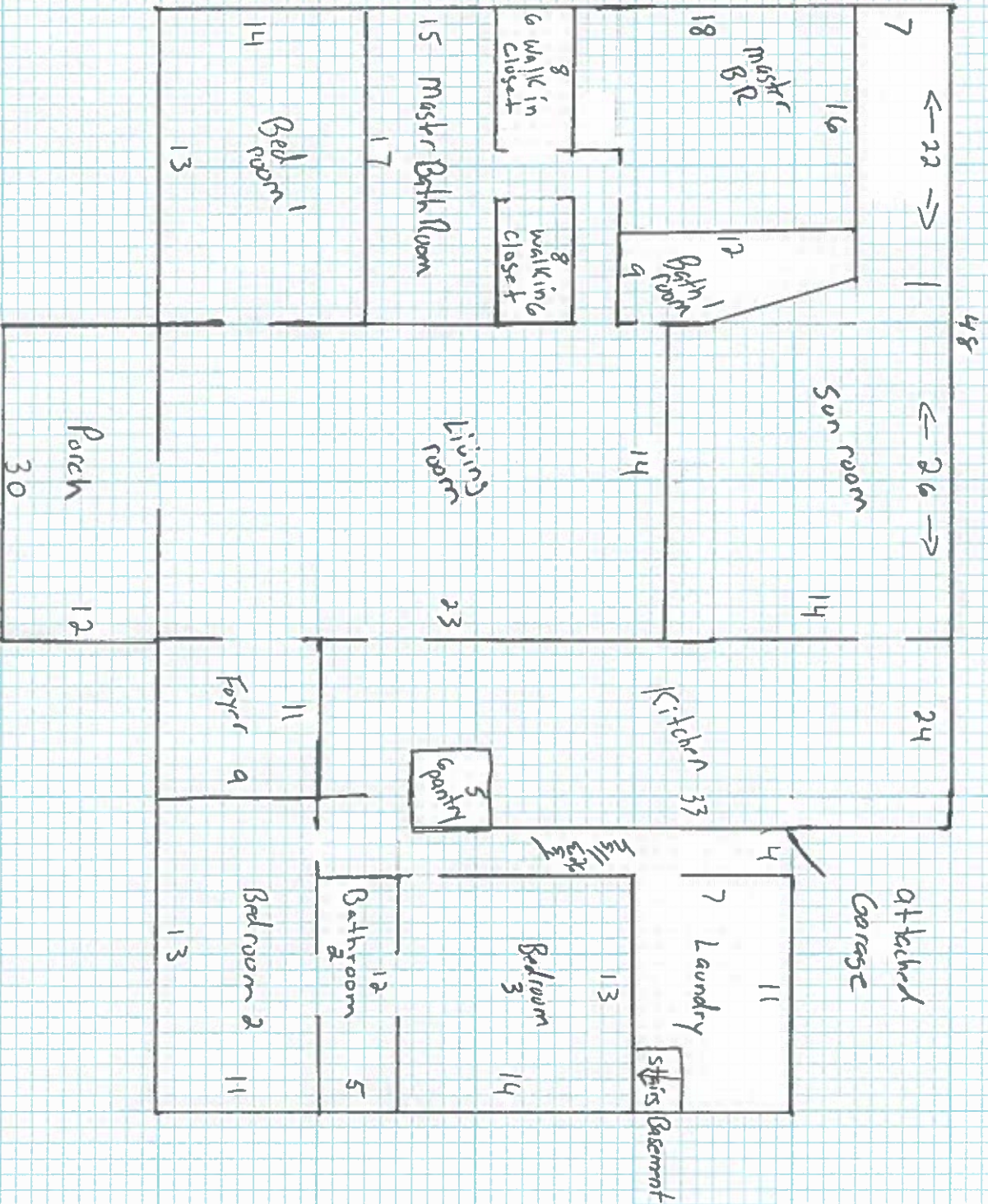
Pantry = 30 sqft

Bedroom 3 = 182 sqft

Laundry = 77 sqft

Porch = 360 sqft

Hallway = 104 sqft

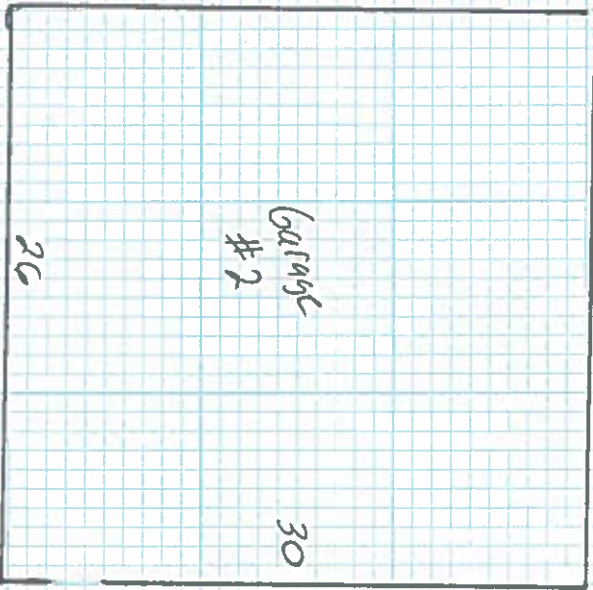


Total heated Area = 3256 sqft

Stonehouse

2 car garage
attached to
house

Garage #2 = 780 sq ft



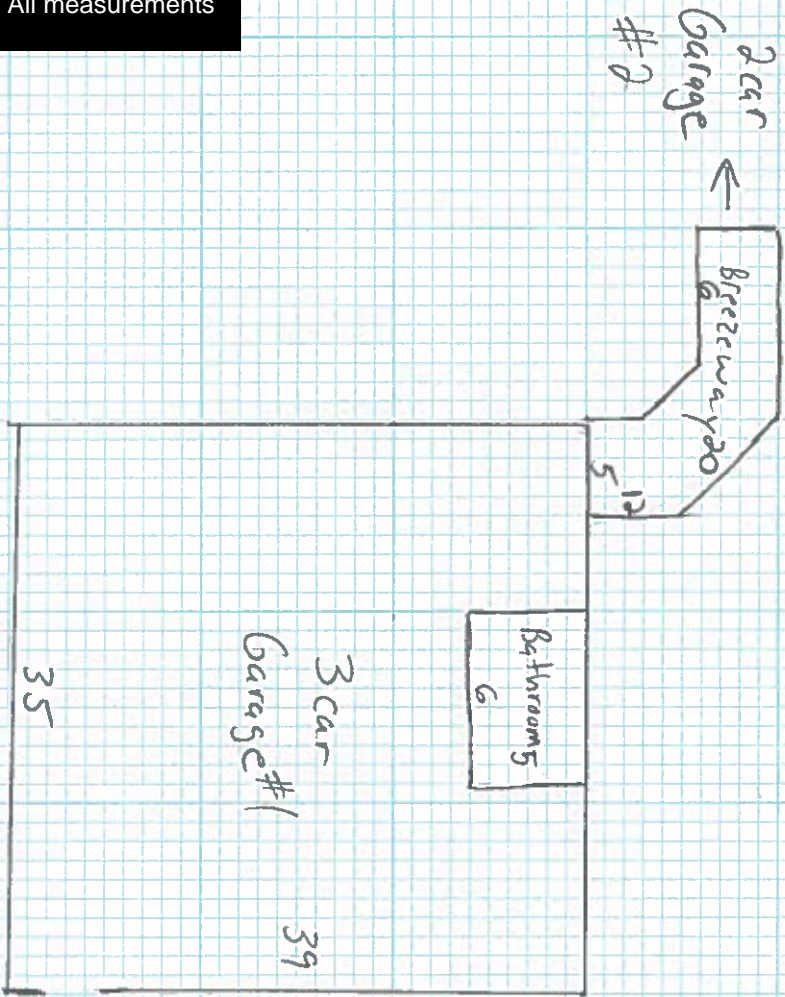
Heated area = 780 sq ft

Attic = 672 sq ft
(above main floor in house)



Stone House

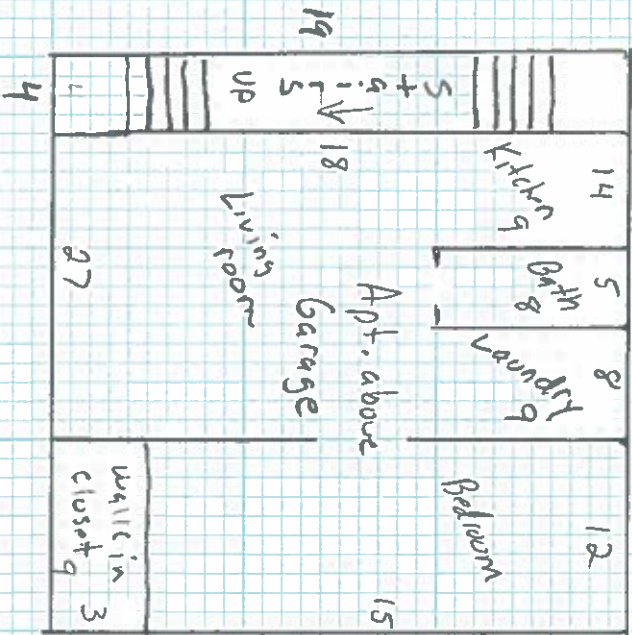
Bathroom = 30 sqft
Breezeway = 190 sqft
3 car garage = 1365 sqft



Total Heated area = 2592 sqft

Apartment above Garage

Stairs = 76 sqft
Kitchen = 126 sqft
Bath = 40 sqft
Living Room = 486 sqft
Laundry = 72 sqft
Bedroom = 180 sqft
W.I. closet = 27 sqft



Stone House

Basement

Living room = 600 sqft

Mech. room = 51 sqft

Closet = 27 sqft

Kitchen = 400 sqft

Bath room = 48 sqft

half bath = 20 sqft

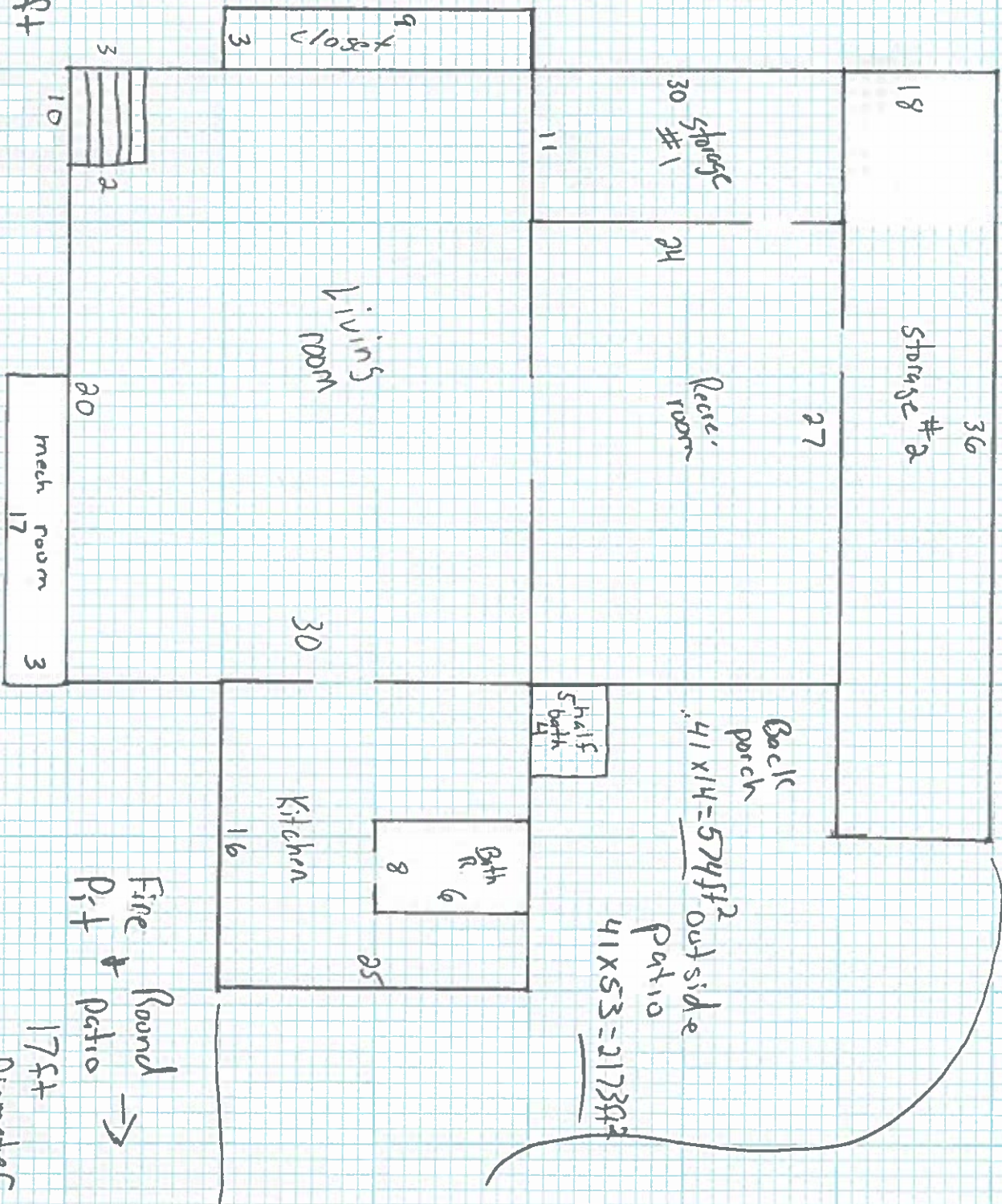
Recre. room = 648 sqft

Storage #1 = 330 sqft

Storage #2 = 648 sqft

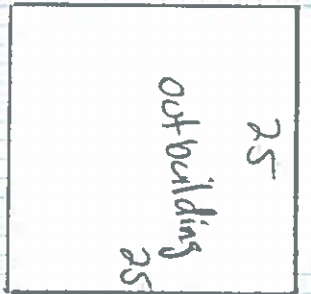
Stairs = 60 sqft

Total basement = 2832 sqft



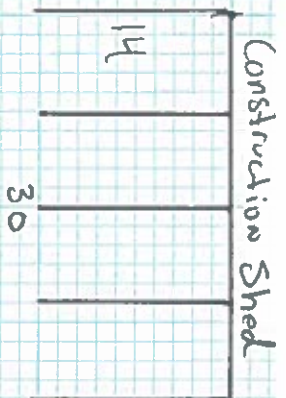
Stonehouse

Barn



Back side

← 71' →



Outbuilding = 625 sqft
Constr. shed = 420 sqft

Cleaning bay #1 = 540 sqft
#2 = 585 sqft

Mech room = 140 sqft

Hallways = 116 sqft

Closest = 12 sqft

Kitchen = 285 sqft

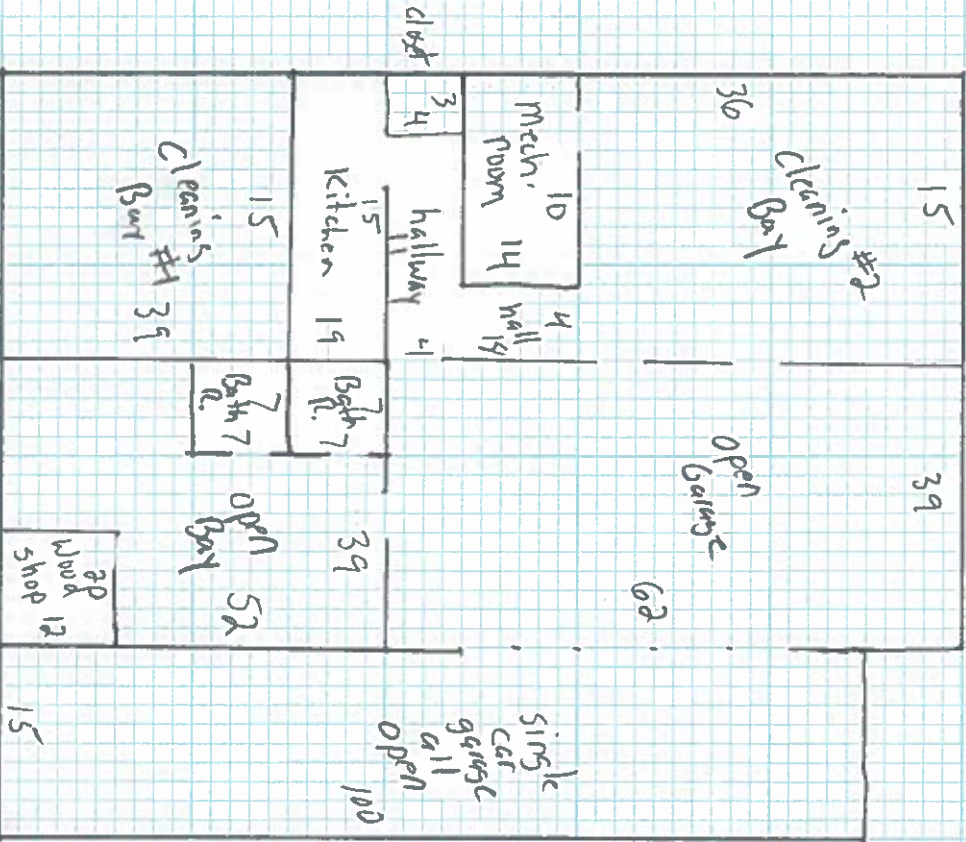
Bathrooms = 98 sqft

Open Garage = 2418 sqft

Open bay = 2028 sqft

Wood shop = 240 sqft

Single car garage = 1500 sqft



Heated area = 7962 sqft

Front
Total Ext area = 8307 sqft

Stone house

Greenhouse
& Outbuilding

Greenhouse = 3100 sqft

Outbuilding = 160 sqft

