



FARM & RANCH

# GORGEIOUS 31+ ACRES WITH MATURE HARDWOODS

1978 Cain Lane – Weatherford, TX



STEPHEN  
REICH GROUP  
WILLIAMS TREW REAL ESTATE

WilliamTrew<sup>☆</sup>  
A DIVISION OF EBBY HALLIDAY REAL ESTATE, INC.

LISTED BY **STEPHEN REICH GROUP** OF WILLIAMS TREW REAL ESTATE

# PROPERTY SUMMARY

## DESCRIPTION

Gorgeous 30 plus acres with mature hardwoods, seasonal creek and a 30 X 40 workshop with electricity and concrete floor. This property is conveniently located less than 10 miles from downtown Weatherford and offers the perfect opportunity to build the home of your dreams out in the country and away from the new current developments. Habitat is perfect for all sort of wildlife including, deer, turkey and wild hogs, and you are free to hunt and fish. Workshop is spray foam insulated and is complete with over 2000 gallons of water storage. Don't miss this rare opportunity!

## LOCATION

CITY	Weatherford
County	Parker
Schools	Garner ISD
Driving Directions	From Weatherford, take Ric Williamson to Old Garner Road. Turn on Cain Lane. Property is on the right.

## OFFER SUMMARY

List Price	\$809,120
Lot Size	31.12 acres
Utilities	Electricity Connected, Well

## HIGHLIGHTS

- 31.12 ACRES
- SEASONAL CREEK
- 30X40 WORKSHOP
- DEER, TURKEY, WILD HOGS FOR HUNTING
- WORKSHOP IS INSULATED W/ELECTRIC
- AG EXEMPT

## LISTING PRESENTED BY:



**STEPHEN REICH**  
**817-597-8884**  
stephen.reich@williamstrew.com



**PROPERTY WEBSITE LINK:**  
**[stephenreichgroup.com/20008329](http://stephenreichgroup.com/20008329)**



**PARKER COUNTY OFFICE**  
400 Shops Boulevard, Ste. 200  
Willow Park, TX 76087

**FARM & RANCH • RESIDENTIAL • COMMERCIAL-DEVELOPMENT • LAND**



# PROPERTY PHOTOS



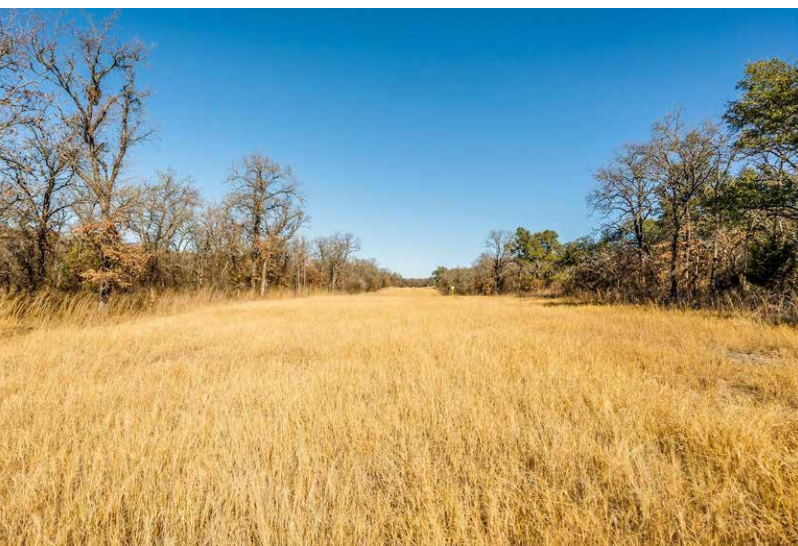
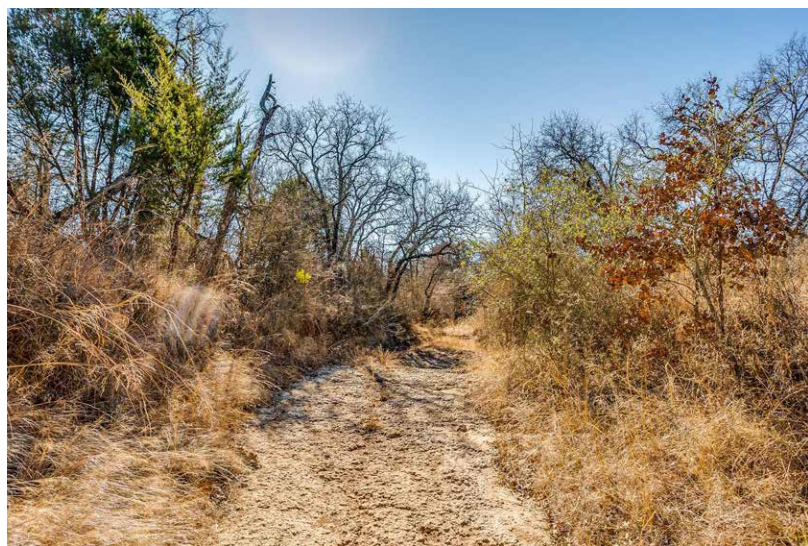
STEPHEN REICH – 817.597.8884



WilliamsTrew   
A DIVISION OF EBBY HALLIDAY REAL ESTATE, INC.



# PROPERTY PHOTOS



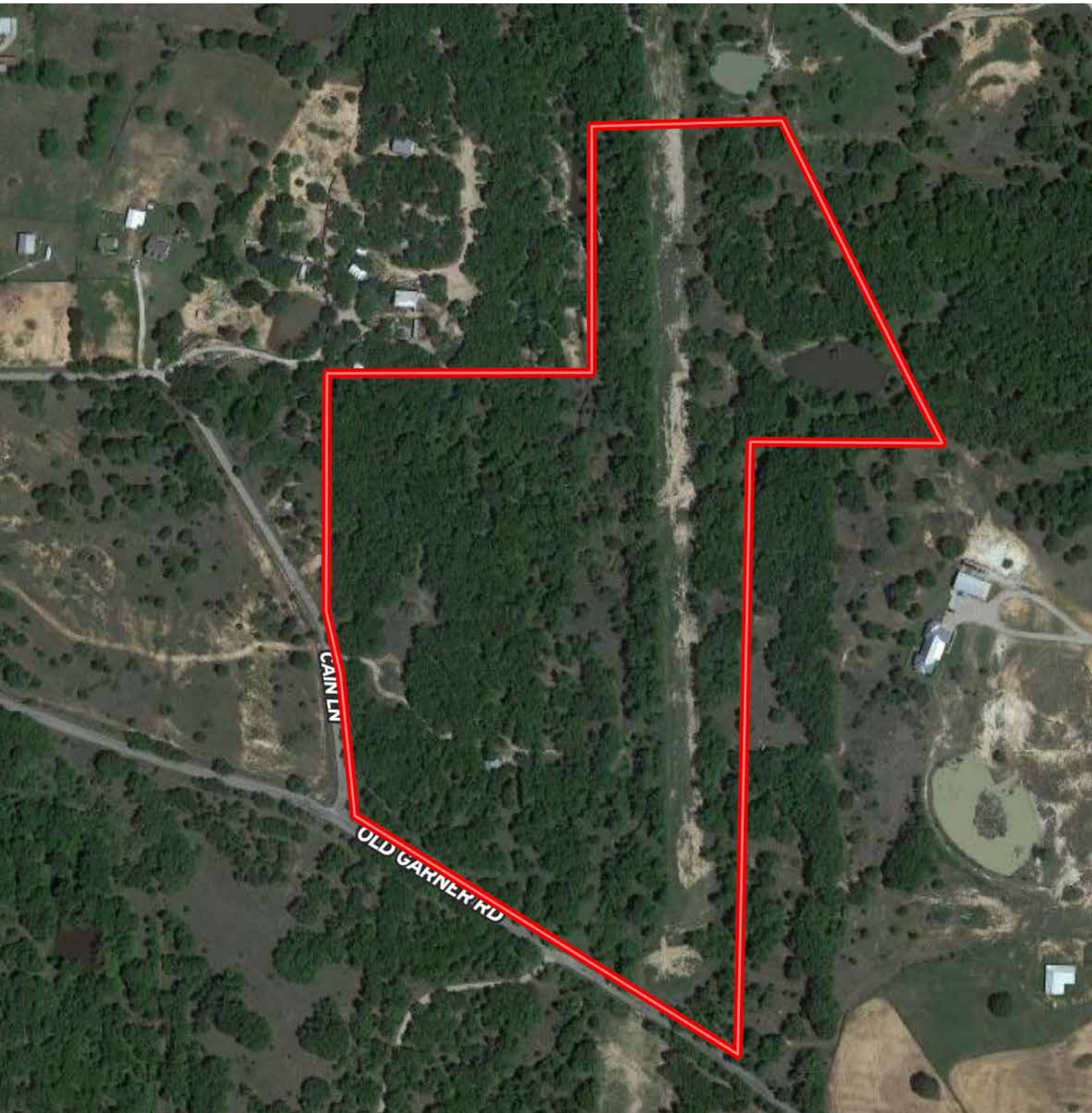
STEPHEN REICH – 817.597.8884



WilliamsTrew  
A DIVISION OF EBBY HALLIDAY REAL ESTATE, INC.



# AERIAL MAP



STEPHEN REICH – 817.597.8884



WilliamsTrew   
A DIVISION OF EBBY HALLIDAY REAL ESTATE, INC.



[illegible]