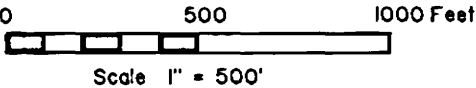
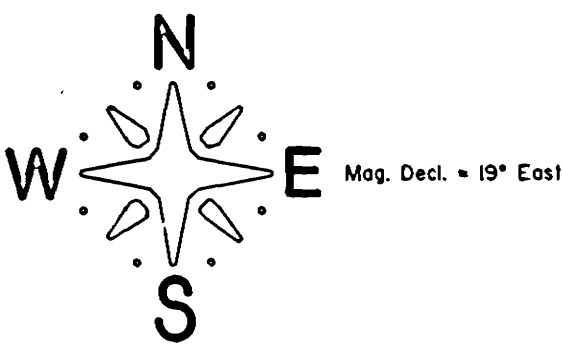


RECORD OF SURVEY
for BOHEMIA INC.
by WARD NORTHWEST INC.
in Section 24, T.17 S., R.12 W., W.M.
Lane County, Oregon - 10/15/87



LANE COUNTY SURVEYORS OFFICE
FILE NO. 28080
FILED 11-16-87
C

- LEGEND
- Monument Found
 - Monument Set
 - Line Posted with 6 ft steel fence posts
 - Line posted prior survey, Rob Ward CS 27878
 - G.L.O. General Land Office

NARRATIVE

The purpose of this survey was to locate and monument properly corners and lines that define lands owned by Bohemia Inc. from that of other ownership.

The East boundary of section 24, was originally surveyed in 1878, by George Mercer. The township was originally subdivided in 1883, by William Wright. A dependent resurvey of the township was performed in 1935, by George Rigby.

All section corners and quarter corners are caps set by George Rigby, in 1935.

The S 1/16 corner between S24/S19 was set by Jim Peterson in 1986, CS 27524.

The C-E-SE 1/64 S24 & SE-SE 1/64 S24 & C-S-SE 1/64 S24 & E 1/16 S24/S25, were set by Rob Ward in 1987, CS 27878

The CS 1/16 corner, monumented during this survey was set per standard subdivision procedures outlined in the BLM Manual of Survey Instruction, 1973 Edition.

Basis of Bearing was determined by Solar Observation.

This survey was performed using a NIKON NTD-2 semi total station.

U.S.F.S. Aluminum caps are 2-1/2" X 30" aluminum pipes with a flared bottom and a 3-1/4" aluminum cap with magnet.

Bearings and distances to bearing trees were measured with a semi total station and taken to the center of the tree at the top of the root crown.

REGISTERED
PROFESSIONAL
LAND SURVEYOR

Robert B Ward Jr.

OREGON
ROBERT B. WARD, JR.
JULY 30, 1976
1091

WARD NORTHWEST INC.
P.O. Box 105
Florence, Oregon 97439

(A) 1/4 Corner Section 13,24 1/4 S 13 S 24 1935
FND: 2-1/2" G.L.O. Brass Cap marked with the following accessories, 18" Fir snag bears N 80-1/2° W, 7.9 ft (healed face)
21" Fir Stump bears N 90° E, 4.3 ft (healed face)
Both of the above BT's established in 1965 by R. Reindl a U.S.F.S. Forest Tech. 1935 BT's gone.
21" Fir bears S 8-3/4° E, 54.8 ft (CS 27878)
Reference Monument Found, U.S.F.S. Aluminum Cap marked bears N 69°58' W, 48.34 ft
RM S 24 1987 LS 1091

(B) 1/4 Corner Section 23,24 1/4 S 23 S 24 1935
FND: 2-1/2" G.L.O. Brass Cap marked with the following accessories, 50" Fir bears N 43-1/2° W, 103.1 ft (healed face)
12" Spruce bears N 70-1/4° E, 20.7 ft
Reference Monument Found, U.S.F.S. Aluminum Cap marked bears S 7°37' E, 42.44 ft
RM S 24 1987 LS 1091

(C) 1/4 Corner Section 24,19 1/4 S 24 S 19 1935
FND: 2-1/2" G.L.O. Brass Cap marked with the following accessories, 24" Fir bears S 71-1/2° W, 42.5 ft (healed face)
Reference Monument Found, U.S.F.S. Aluminum Cap marked bears S 81°11' E, 57.2 ft
RM S 19 1986 LS 1084

(D) CS 1/16 Corner Section 24 S24
SET: 2-1/2" Brass Cap attached to a 2-1/2" X 30" Galvanized Iron Pipe marked with the following accessories, 7" Cascarra Bears S 34-3/4° E, 14.0 ft
8" Alder bears N 71-1/4° W, 39.6 ft (Both BT's bark scribed "CS 1/16 S24 BT")
S 1/16 1987 LS 1091

(E) C-E-SE 1/64 Corner Section 24 S24 C-E-SE 1/64
FND: U.S.F.S. Aluminum Cap marked with the following accessories, 19" Alder bears N 58-1/4° E, 18.8 ft
23" Alder bears S 74° W, 13.2 ft (Both BT's bark scribed)
T17S R12W R11W S 1/16 1987 LS 1091

(F) S 1/16 Corner Section 24,19 S24 S 19 1986
FND: U.S.F.S. Aluminum Cap marked with the following accessories, 32" Spruce bears S 71-3/4° W, 40.6 ft (open face)
12" Alder bears S 31-1/4° E, 9.7 ft (bark scribed)
T17S R12W R11W S 1/16 1986 LS 1084

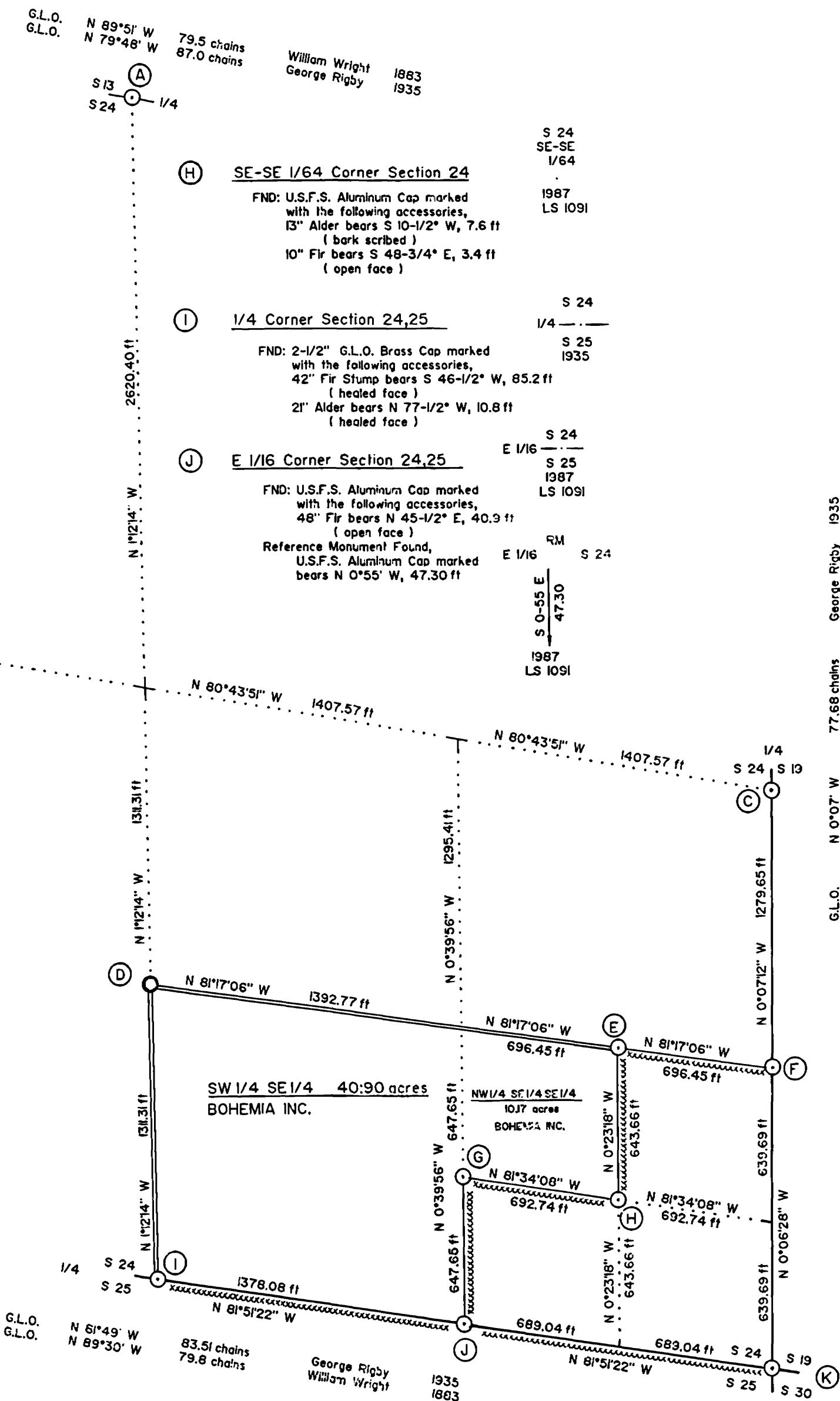
(G) C-S-SE 1/64 Corner Section 24 S24 C-S-SE 1/64
FND: U.S.F.S. Aluminum Cap marked with the following accessories, 9" Alder bears S 15-1/4° W, 12.3 ft (bark scribed)
13" Fir bears S 68° W, 11.0 ft (open face)
S 24 1987 LS 1091

(H) SE-SE 1/64 Corner Section 24 S24 SE-SE 1/64
FND: U.S.F.S. Aluminum Cap marked with the following accessories, 13" Alder bears S 10-1/2° W, 7.6 ft (bark scribed)
10" Fir bears S 48-3/4° E, 3.4 ft (open face)
S 24 1987 LS 1091

(I) 1/4 Corner Section 24,25 1/4 S 24 S 25 1935
FND: 2-1/2" G.L.O. Brass Cap marked with the following accessories, 42" Fir Stump bears S 46-1/2° W, 85.2 ft (healed face)
21" Alder bears N 77-1/2° W, 10.8 ft (healed face)
S 24 1987 LS 1091

(J) E 1/16 Corner Section 24,25 E 1/16 S 24 S 25 1987 LS 1091
FND: U.S.F.S. Aluminum Cap marked with the following accessories, 48" Fir bears N 45-1/2° E, 40.9 ft (open face)
Reference Monument Found, U.S.F.S. Aluminum Cap marked bears N 0°55' W, 47.30 ft
RM S 24 1987 LS 1091

(K) Section Corner 24,19,25,30 S24 S 19 1935
FND: 2-1/2" G.L.O. Brass Cap marked with the following accessories, 55" Cedar bears N 59° E, 128.1 ft (healed face)
12" Alder bears N 33-1/4° W, 18.8 ft (bark scribed)
23" Cedar bears S 65-3/4° W, 23.3 ft
Reference Monument Found, U.S.F.S. Aluminum Cap marked bears S 77°48' E, 57.6 ft
RM T17S R11W S30 1986 LS 1084



30074