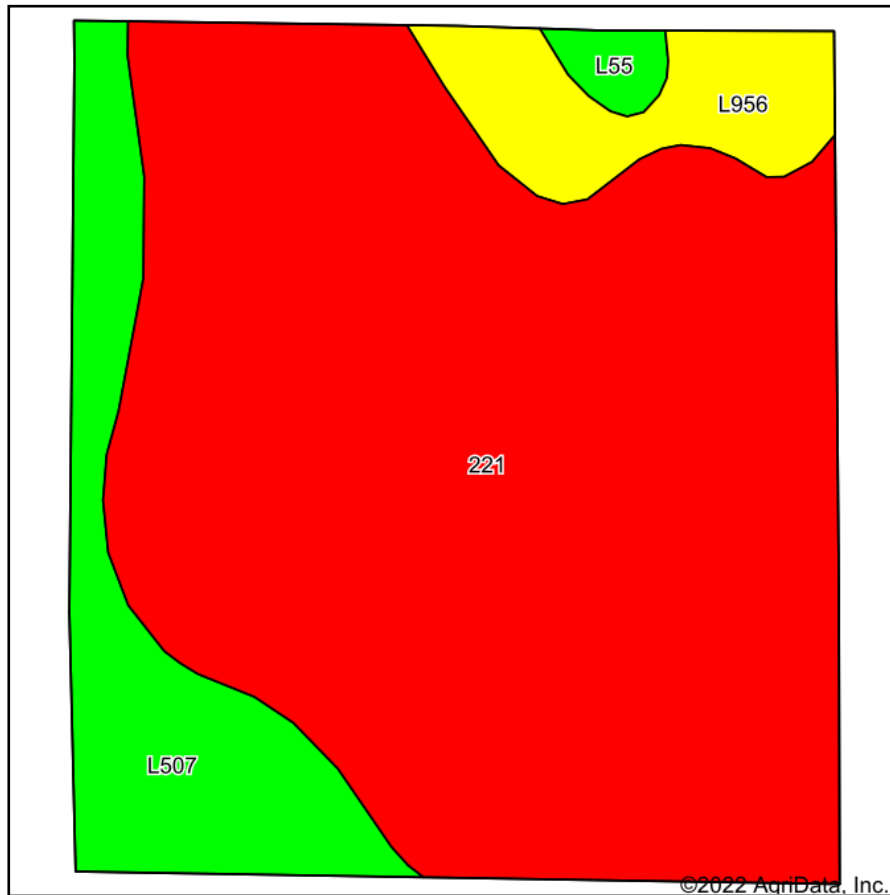
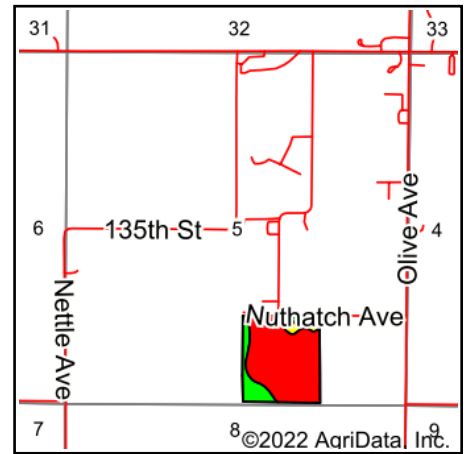


# Tillable Soils Map



Soils data provided by USDA and NRCS.



State: **Iowa**  
 County: **Franklin**  
 Location: **5-91N-20W**  
 Township: **Reeve**  
 Acres: **35.65**  
 Date: **6/28/2022**



Maps Provided By:



Area Symbol: IA069, Soil Area Version: 28

Code	Soil Description	Acres	Percent of field	CSR2 Legend	Non-Irr Class *c	*i Corn Bu	*i Soybeans Bu	CSR2**	CSR	*n NCCPI Overall
221	Klossner muck, 0 to 1 percent slopes	27.79	78.0%		Illw	80.0	23.2	32	44	83
L507	Canisteo clay loam, Bemis moraine, 0 to 2 percent slopes	4.93	13.8%		Ilw	0.0	0.0	87		81
L956	Harps-Okoboji complex, Bemis moraine, 0 to 2 percent slopes	2.51	7.0%		Ilw	0.0	0.0	69		79
L55	Nicollet loam, 1 to 3 percent slopes	0.42	1.2%		le	0.0	0.0	91		85
<b>Weighted Average</b>					<b>2.77</b>	<b>62.4</b>	<b>18.1</b>	<b>42.9</b>	<b>*-</b>	<b>*n 82.5</b>

\*\*IA has updated the CSR values for each county to CSR2.

\*- CSR weighted average cannot be calculated on the current soils data, use prior data version for csr values.

\*i Yield data provided by the ISPAID Database version 8.1.1 developed by IA State University.

\*n: The aggregation method is "Weighted Average using all components"

\*c: Using Capabilities Class Dominant Condition Aggregation Method

Soils data provided by USDA and NRCS.