



Secluded 115 Acres with Income and Hunting in Monroe County, MO

T R O P H Y
PROPERTIES AND AUCTION
LAND | RECREATIONAL | RESIDENTIAL

www.TrophyPA.com | (855) 573-5263 | leads@trophy.com



PROPERTY ADDRESS:

County Road 923
Madison, MO 65263

ACRES: 115
COUNTY: Monroe

PROPERTY DESCRIPTION:

Secluded tillable farm with great income and tons of deer sign!
This 115± acre property has over 61 tillable acres plus 9.85 acres of CRP.
The rest of this beautiful farm is wooded ground that surrounds the cropland creating tons of pinch points to hold an impressive number of deer and turkey.

This farm has everything right about it with good ROI, seclusion, location, and hunting potential! This property will not last long!



PRESENTED BY:
MIKE SHARPE
Land Specialist - MO

M: (573) 721-0944
P: (855) 573-5263 x753
E: MSharpe@trophy.com



TROPHY PROPERTIES AND AUCTION

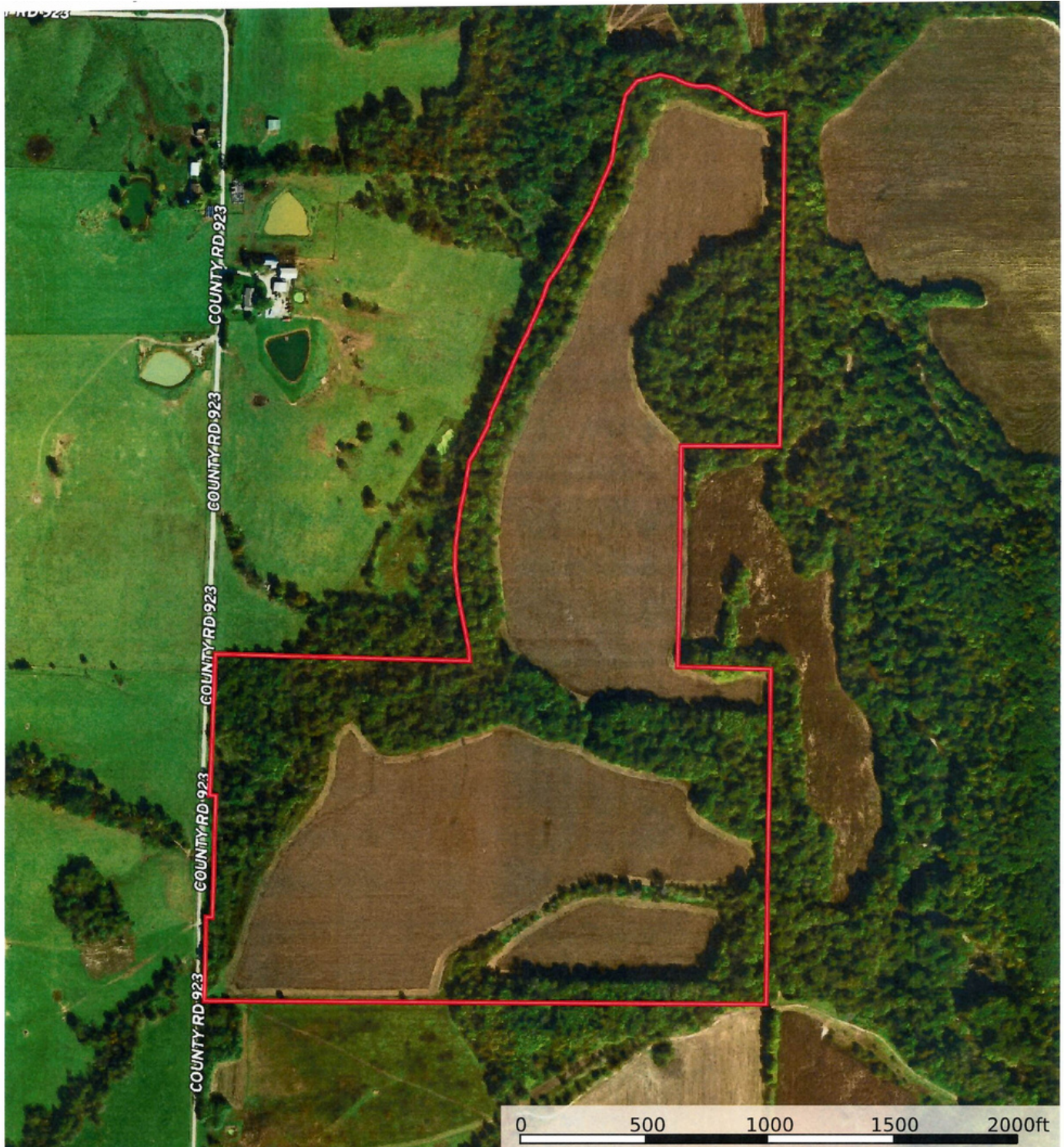
15480 Clayton Road
Suite 101
Ballwin, MO 63011
www.TrophyPA.com
leads@trophy.com



Secluded 115 Acres with Income and Hunting in Monroe County, MO

T R O P H Y
PROPERTIES AND AUCTION
LAND | RECREATIONAL | RESIDENTIAL

www.TrophyPA.com | (855) 573-5263 | leads@trophy.com



Broker does not guarantee the accuracy of sq. ft., lot size or other information.

Buyer is advised to independently verify the accuracy of information through personal inspection and with appropriate professionals.