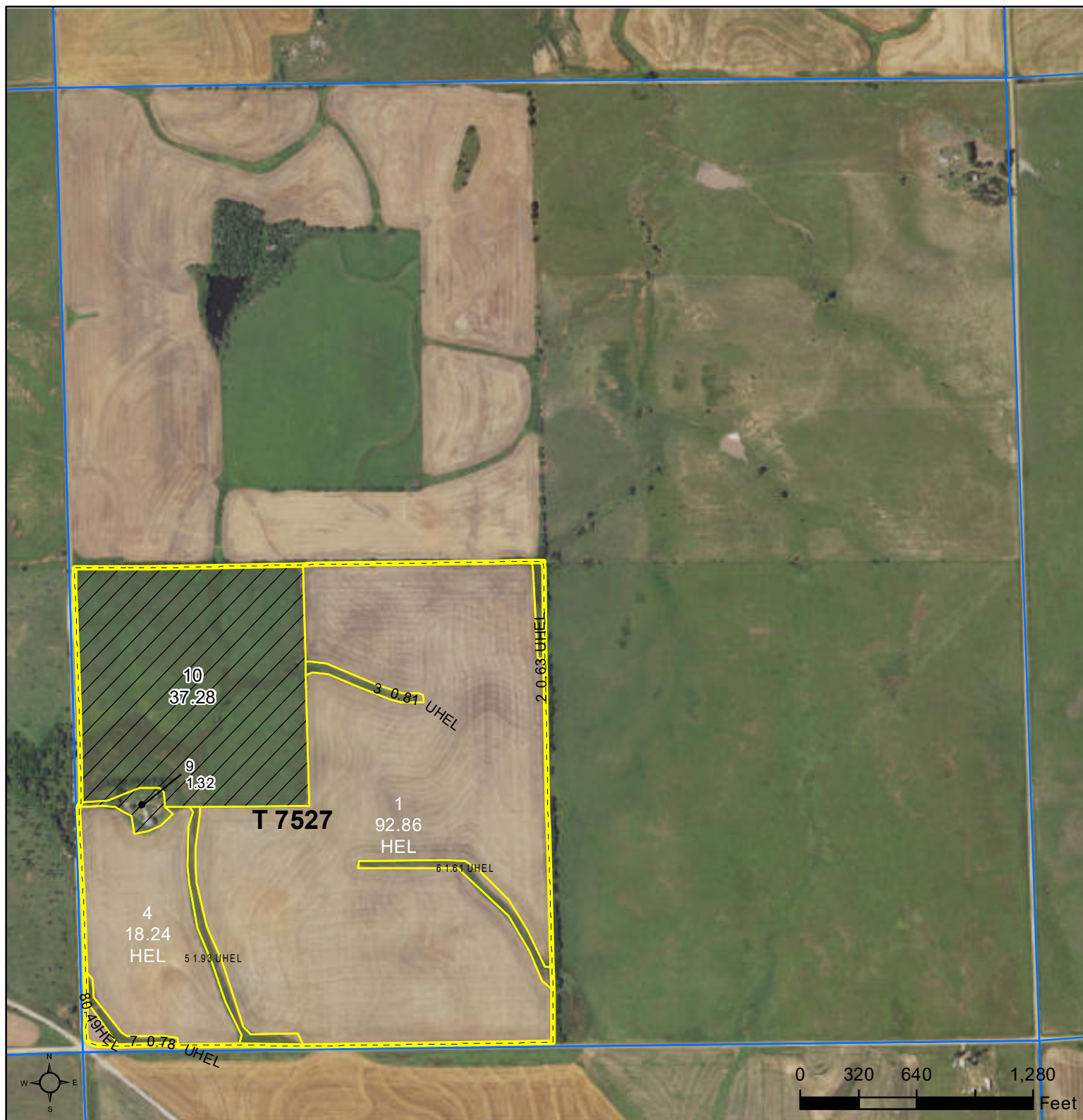




United States  
Department of  
Agriculture

## Lincoln County, Kansas



### Common Land Unit

- Non-Cropland
- Cropland

### Wetland Determination Identifiers

- Restricted Use
- Limited Restrictions
- Exempt from Conservation Compliance Provisions

- Tract Boundary
- PLSS

### All fields NI unless noted on field:

- |                             |                      |
|-----------------------------|----------------------|
| 1/ All Wheat HRW, NI, GR    | 6/ Grass NAG, NI, LS |
| 2/ All Sorghum GRS, NI, GR  | 7/ Grass SMO, NI, FG |
| 3/ All Corn YEL, NI GR      | 8/ Grass SMO, NI, LS |
| 4/ All Soybeans COM, NI, GR | 9/ Grass NAG, NI, GZ |
| 5/ Grass NAG, NI, FG        | 10/ Alfalfa NI, FG   |

Tract Cropland Total: 117.35 acres

2022 Program Year

Map Created September 15, 2021

Farm **2578**  
Tract **7527**

**18-13-5**

Displayed over 2019 NAIP

United States Department of Agriculture (USDA) Farm Service Agency (FSA) maps are for FSA Program administration only. This map does not represent a legal survey or reflect actual ownership; rather it depicts the information provided directly from the producer and/or National Agricultural Imagery Program (NAIP) imagery. The producer accepts the data 'as is' and assumes all risks associated with its use. USDA-FSA assumes no responsibility for actual or consequential damage incurred as a result of any user's reliance on this data outside FSA Programs. Wetland identifiers do not represent the size, shape, or specific determination of the area. Refer to your original determination (CPA-026 and attached maps) for exact boundaries and determinations or contact USDA Natural Resources Conservation Service (NRCS).