

**Grant City, MO Small acreage Near Town on Blacktop
US Hwy 46.
Grant City, MO 64456**



TRACT 1

Est. Price: \$4500/ac

Est. Total Ac: 19+/-

Est. Tillable Ac: 15+/-

Est. Annual Taxes: \$4.03/ac

Location: Highway 46 less than 1 mile
West of Grant City, MO

Est.CRP Income: \$2,329./ yr
Expiring 2027

Description: Location, Location with
Highway Frontage near Grant City, MO.

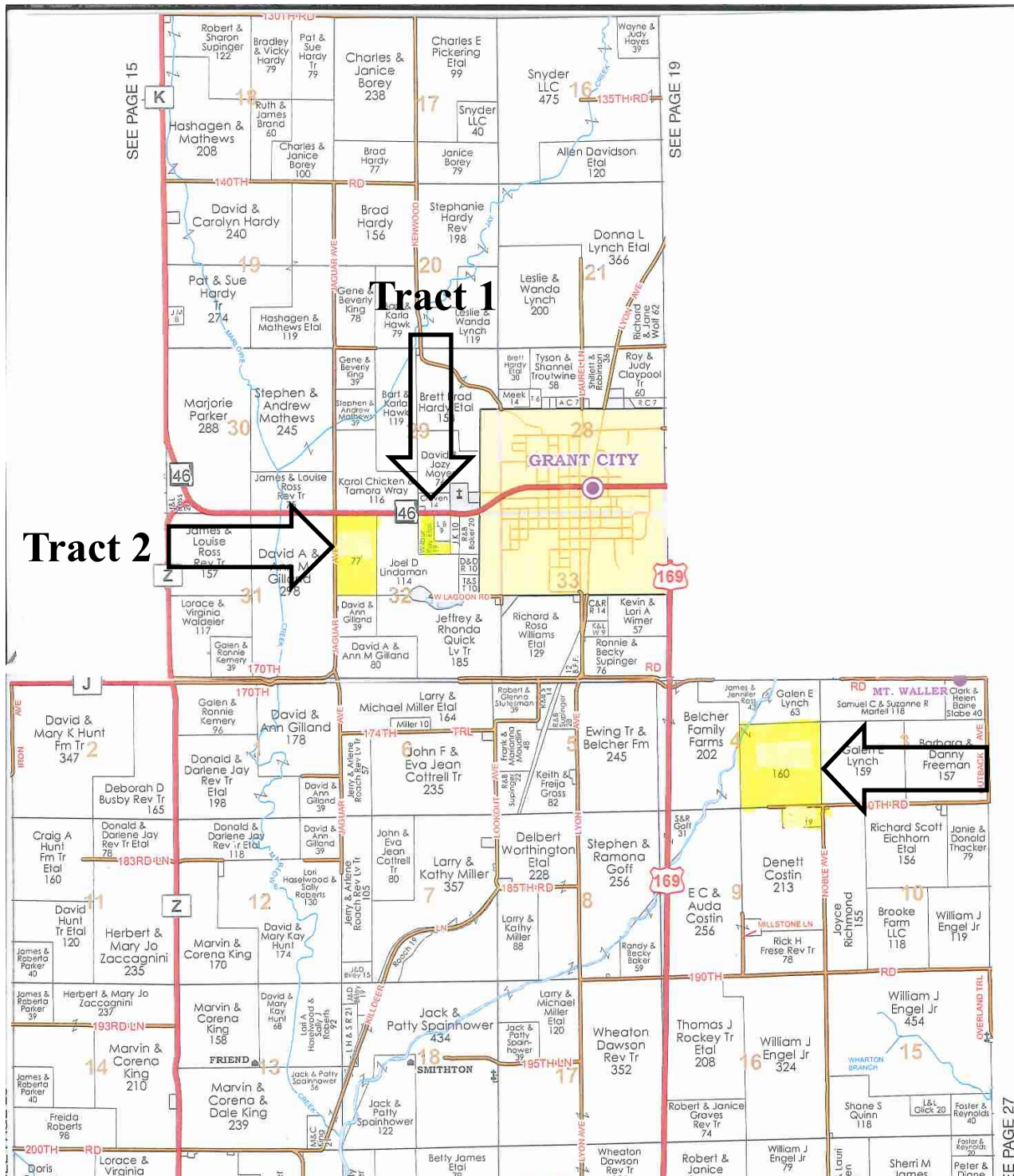


Enterprise Realty & Auction, LLC

121 E. 4th St.

Maryville, MO 64468

Phone (660) 582-7160 Fax (660) 582-7162
property@entrealty.com www.entrealty.com



Enterprise Realty & Auction, LLC

121 E. 4th St.

Maryville, MO 64468

Phone (660) 582-7160 Fax (660) 582-7162

property@entrealty.com www.entrealty.com



All Measurements are for
FSA Programs Only

Wetland Determination Identifiers

- Restricted Use
 - ▽ Limited Restrictions
 - Exempt from Conservation Compliance Provisions
- Disclaimer: Wetland identifiers do not represent the size, shape or specific determination of the area. Refer to your original determination (CPA-026 and attached maps) for exact wetland boundaries and determinations, or contact NRCS.

Worth Co. FSA

C=Com, Yellow, Grain
SB=Soybeans, common, Grain
WHT=Wheat, Soft Red Winter, Grain
Hay=Mixed Forage, IGS, Forage
P=Mixed Forage, IGS, Grazing
ALF=Alfalfa, Forage
AGM=Mixed Forage, Alfalfa Grass Mix, FG
GLS=Mixed Forage IGS, Left Standing
Crops are non-irrigated unless noted

1 inch equals 660 feet

Program Year: 2022

Created: 10/28/2021

Flown: 2020-06-07



- clu
- crp
- plss

**Farm 236
Tract 435**



Enterprise Realty & Auction, LLC

121 E. 4th St.

Maryville, MO 64468

Phone (660) 582-7160 Fax (660) 582-7162

property@entrealty.com www.entrealty.com