

# Camden County, MO



## Legend

### Highway

- Interstate Highway
- US Highway
- Numbered State Highway
- Lettered State Highway

### Parcel

- Parcel

### Corporate Limit Line

- DASHED LAND HOOK
- SOLID LAND HOOK

### Section

- Section

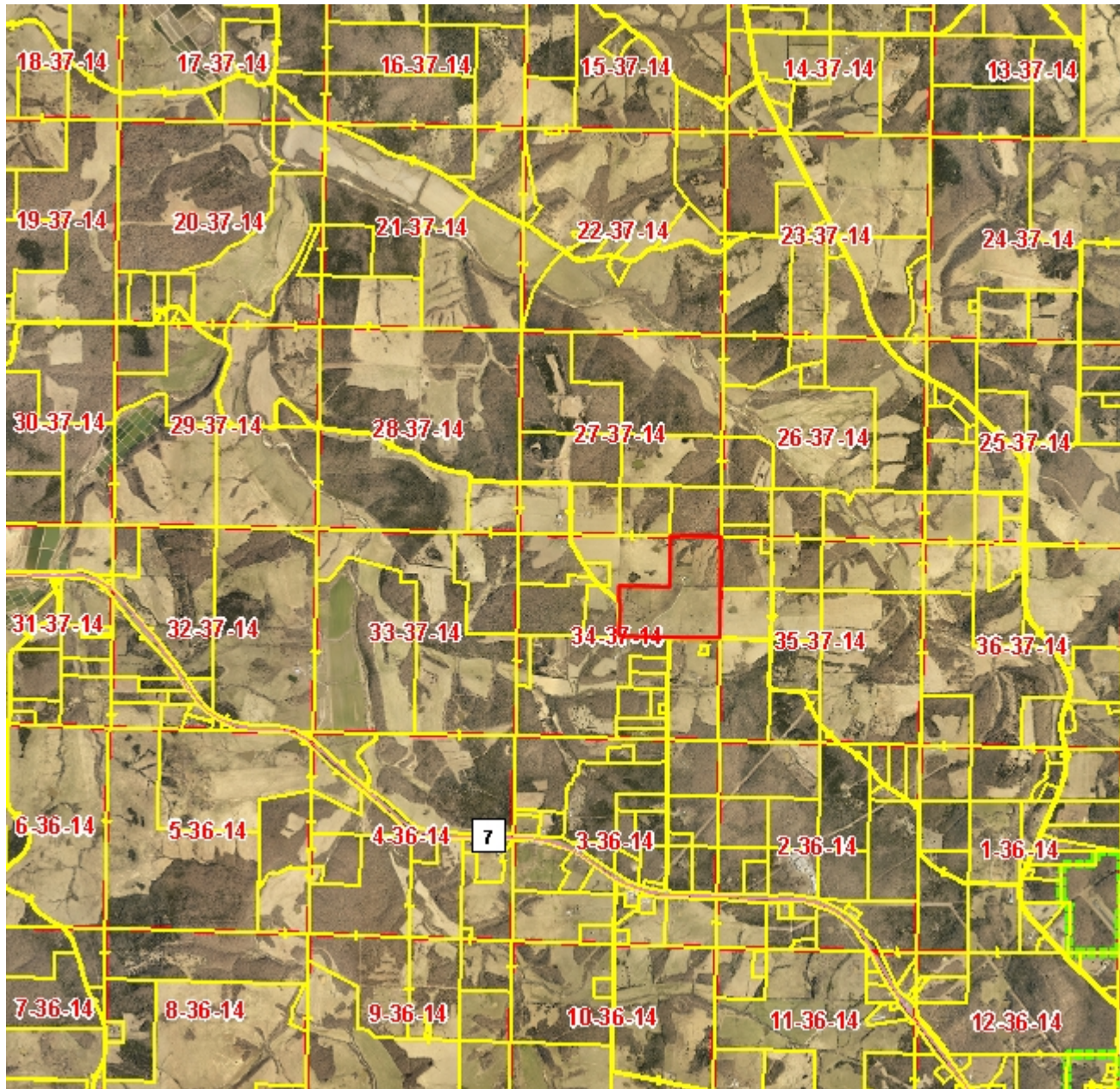
- County Boundary

PULASKI

1 in. = 4338ft.



## Notes



8,675.2 0 4,337.61 8,675.2 Feet

This Cadastral Map is for informational purposes only. It does not purport to represent a property boundary survey of the parcels shown and shall not be used for conveyances or the establishment of property boundaries.

THIS MAP IS NOT TO BE USED FOR NAVIGATION