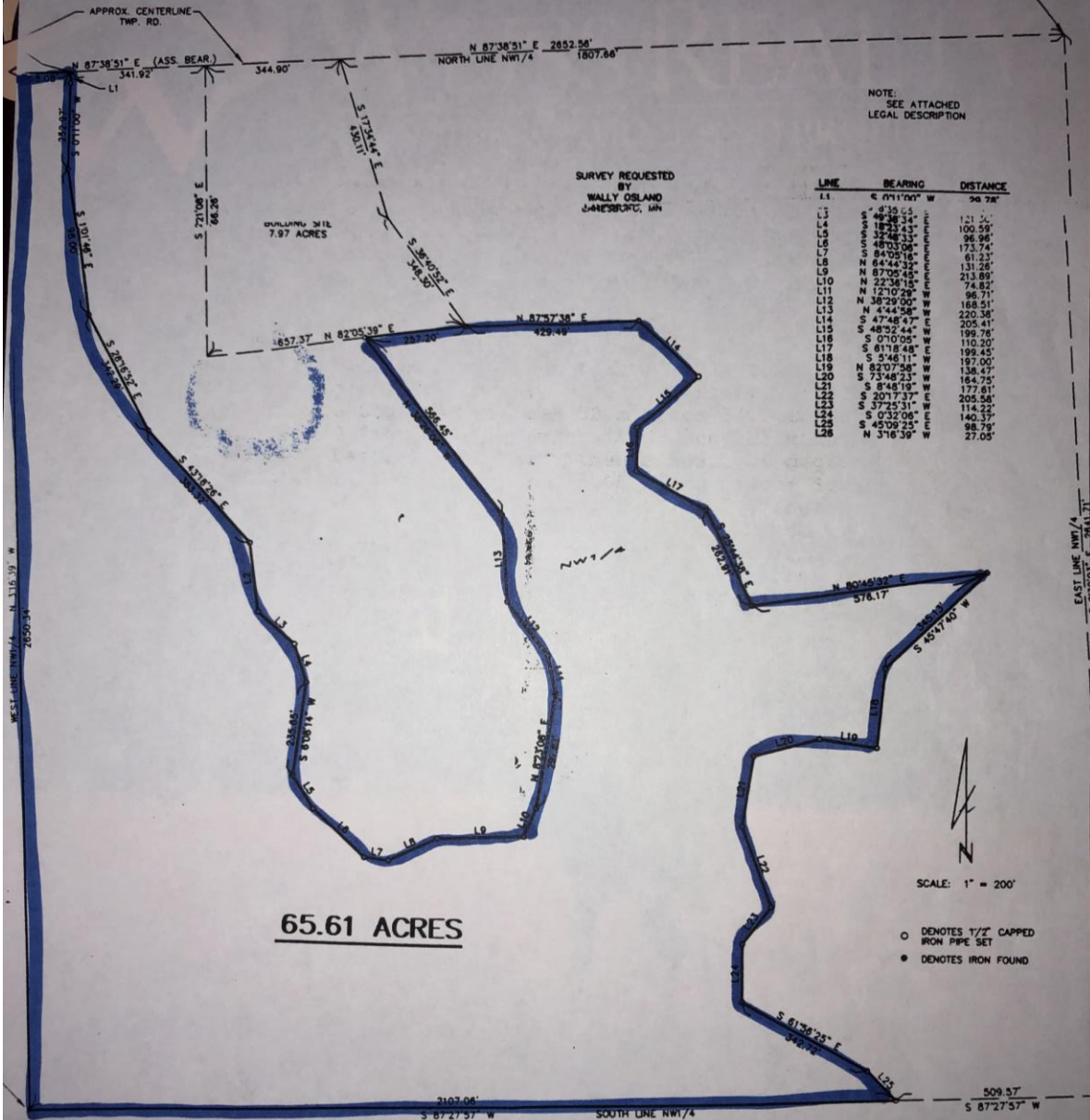


# CERTIFICATE OF SURVEY

PART OF THE NW1/4 OF SEC. 5,  
T103N, R9W, FILLMORE CO., MN

NE COR. NW1/4  
SEC. 5, T103N, R9W,  
FILLMORE CO., MN



NOTE:  
SEE ATTACHED  
LEGAL DESCRIPTION

SURVEY REQUESTED  
BY  
WALLY OSLAND  
JANESBURG, MN

LINE	BEARING	DISTANCE
L1	E 0°11'00" W	26.78'
L2	S 8°35'05"	121.24'
L3	S 48°38'54"	100.59'
L4	S 18°23'43"	96.96'
L5	S 32°08'33"	173.74'
L6	S 48°13'08"	61.23'
L7	S 84°05'18"	131.26'
L8	N 84°44'32"	213.89'
L9	N 87°05'45"	74.82'
L10	N 22°38'15"	98.71'
L11	N 12°10'28"	168.51'
L12	N 38°29'00"	220.38'
L13	N 4°44'58"	205.41'
L14	S 47°48'57"	199.76'
L15	S 48°22'44"	197.00'
L16	S 61°18'48"	138.47'
L17	S 5°48'11"	164.75'
L18	N 82°07'38"	177.61'
L19	S 73°48'23"	205.58'
L20	S 8°48'19"	114.22'
L21	S 201°7'37"	140.37'
L22	S 72°5'31"	98.79'
L23	S 0°32'08"	27.05'
L24	S 45°09'25"	
L25	N 316°39"	
L26	N 80°40'37"	
L27	S 45°47'40"	
L28	S 61°38'25"	

# LEGAL DESCRIPTION

That part of the Northwest Quarter (NW 1/4) of Section 5, Township 103 North, Range 9 West, Fillmore County, Minnesota, described as follows: Beginning at the Northwest Corner of said NW 1/4; thence North 87 degrees 38 minutes 51 seconds East (assumed bearing) along the North line of said NW 1/4, 158.08 feet; thence South 00 degrees 11 minutes 00 seconds West, 252.97 feet; thence South 10 degrees 01 minute 46 seconds East, 398.00 feet; thence South 28 degrees 16 minutes 52 seconds East, 342.29 feet; thence South 43 degrees 18 minutes 26 seconds East, 383.32 feet; thence South 08 degrees 35 minutes 05 seconds East, 175.41 feet; thence South 49 degrees 38 minutes 34 seconds East, 121.30 feet; thence South 18 degrees 23 minutes 43 seconds East, 100.59 feet; thence South 06 degrees 08 minutes 14 seconds West, 235.65 feet; thence South 32 degrees 48 minutes 33 seconds East, 96.96 feet; thence South 48 degrees 03 minutes 06 seconds East, 173.74 feet; thence South 84 degrees 05 minutes 16 seconds East, 61.23 feet; thence North 64 degrees 44 minutes 32 seconds East, 131.26 feet; thence North 87 degrees 05 minutes 45 seconds East, 213.89 feet; thence North 22 degrees 36 minutes 15 seconds East, 74.82 feet; thence North 08 degrees 23 minutes 08 seconds East, 291.82 feet; thence North 12 degrees 10 minutes 29 seconds West, 96.71 feet; thence North 38 degrees 29 minutes 00 seconds West, 168.51 feet; thence North 04 degrees 44 minutes 58 seconds West, 220.38 feet; thence North 38 degrees 26 minutes 06 seconds West, 566.45 feet; thence North 82 degrees 05 minutes 39 seconds East, 257.20 feet; thence North 87 degrees 57 minutes 38 seconds East, 429.49 feet; thence South 47 degrees 48 minutes 47 seconds East, 205.41 feet; thence South 48 degrees 52 minutes 44 seconds West, 199.76 feet; thence South 00 degrees 10 minutes 05 seconds West, 110.20 feet; thence South 61 degrees 18 minutes 48 seconds East, 199.45 feet; thence South 25 degrees 44 minutes 38 seconds East, 262.91 feet; thence North 80 degrees 45 minutes 32 seconds East, 576.17 feet; thence South 45 degrees 47 minutes 40 seconds West, 345.13 feet; thence South 05 degrees 46 minutes 11 seconds West, 197.00 feet; thence North 82 degrees 07 minutes 58 seconds West, 138.47 feet; thence South 73 degrees 48 minutes 23 seconds West, 164.75 feet; thence South 08 degrees 48 minutes 19 seconds West, 177.61 feet; thence South 20 degrees 17 minutes 37 seconds East,

205.58 feet; thence South 37 degrees 25 minutes 31 seconds West, 114.22 feet; thence South 00 degrees 32 minutes 06 seconds East, 140.37 feet; thence South 61 degrees 56 minutes 25 seconds East, 342.72 feet; thence South 45 degrees 09 minutes 25 seconds East, 98.79 feet to the South line of said NW 1/4; thence South 87 degrees 27 minutes 57 seconds West along said South line, 2107.06 feet to the Southwest Corner of said NW 1/4; thence North 03 degrees 16 minutes 39 seconds West along the West line of said NW 1/4, 2650.34 feet to the point of beginning and containing 65.61 acres, more or less. Subject to easement for a Township Road across the Northerly line thereof. Subject to any other easements of record.