



First \_\_\_\_\_  
**COLORADO LAND**  
Office

**LISTING BROKER**

Beatrice Price  
Broker Associate  
719-221-2647 Cell  
Beatrice@FirstColorado.com



**\$272,000**  
MLS #3281930



## *000 County Road 334, Westcliffe CO*

- ♦ 34.00 Acres
- ♦ Three Separate Mining Claims
- ♦ Spectacular Views
- ♦ Driveway and Building Pad in Place
- ♦ Pasture land, Spruce, Aspen & Ponderosa Trees
- ♦ Dirt Road
- ♦ Well (Not Drilled) & Septic System Required
- ♦ 2021 Taxes \$575

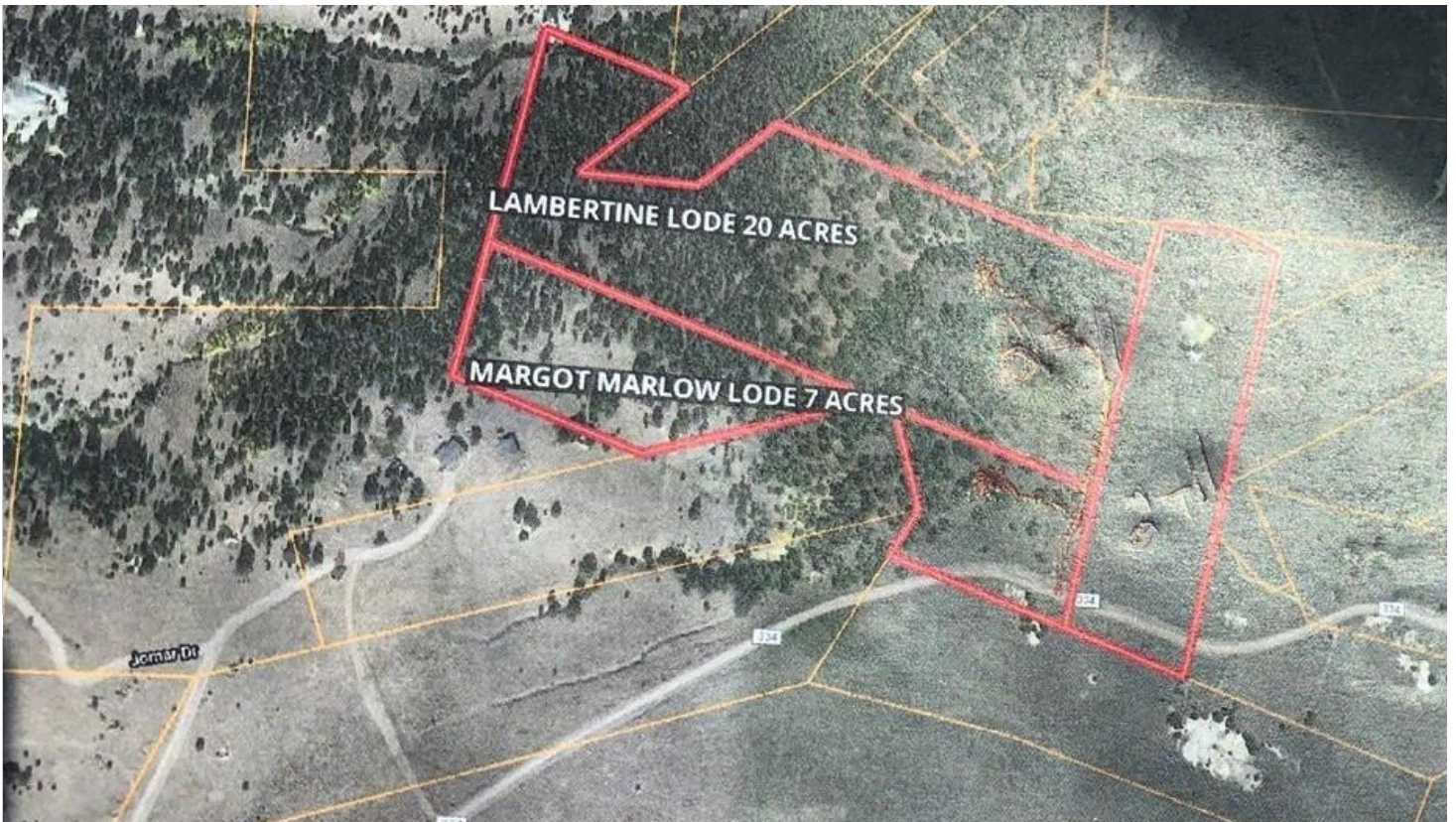


*FirstColorado.com - 719-539-6682 - 7385 W. Hwy 50/Box 749 Salida, CO 81201*

ALL DATA, MEASUREMENTS, SQUARE FOOTAGE, ETC. DEEMED RELIABLE. NO WARRANTIES OR REPRESENTATIONS EXPRESSED OR IMPLIED.

## ***Come and see yourself at this...***

*gorgeous 34 acre parcel consisting of three separate mining claims with spectacular views and no HOA. If you've been looking for space to relax and enjoy some peace and quiet without an HOA telling you what you can and cannot do, these parcels are for you. With a driveway and building pad already in place, bring your dream home plans, your horses and pets and enjoy the country lifestyle that's awaiting you. The lots offer panoramic views of Pikes Peak, the Sangre De Cristo range and rolling hills of Rosita to the east as well as epic views of Mount Tyndal and the historic Bassick mine directly in front of the building pad. Enjoy the abundance of pastureland, spruce, aspen and ponderosa trees. Utilities are at the road nearest to the eastern section of the parcels. Park your RV while you build your mountain dream home! The quaint town of Westcliffe is about 15 minutes away and AT&T cell coverage works!*



Directions: Heading east out of Westcliffe travel approximately seven miles on Highway 96 and make a right turn onto County Road 341. Go almost two miles and make a right turn onto County Road 334. The property is located about one-two mile up on right side where you will see a sign by the driveway.

***FirstColorado.com - 719-539-6682 - 7385 W. Hwy 50/Box 749 Salida, CO 81201***

ALL DATA, MEASUREMENTS, SQUARE FOOTAGE, ETC. DEEMED RELIABLE. NO WARRANTIES OR REPRESENTATIONS EXPRESSED OR IMPLIED.