

REAL COUNTY. TEXAS

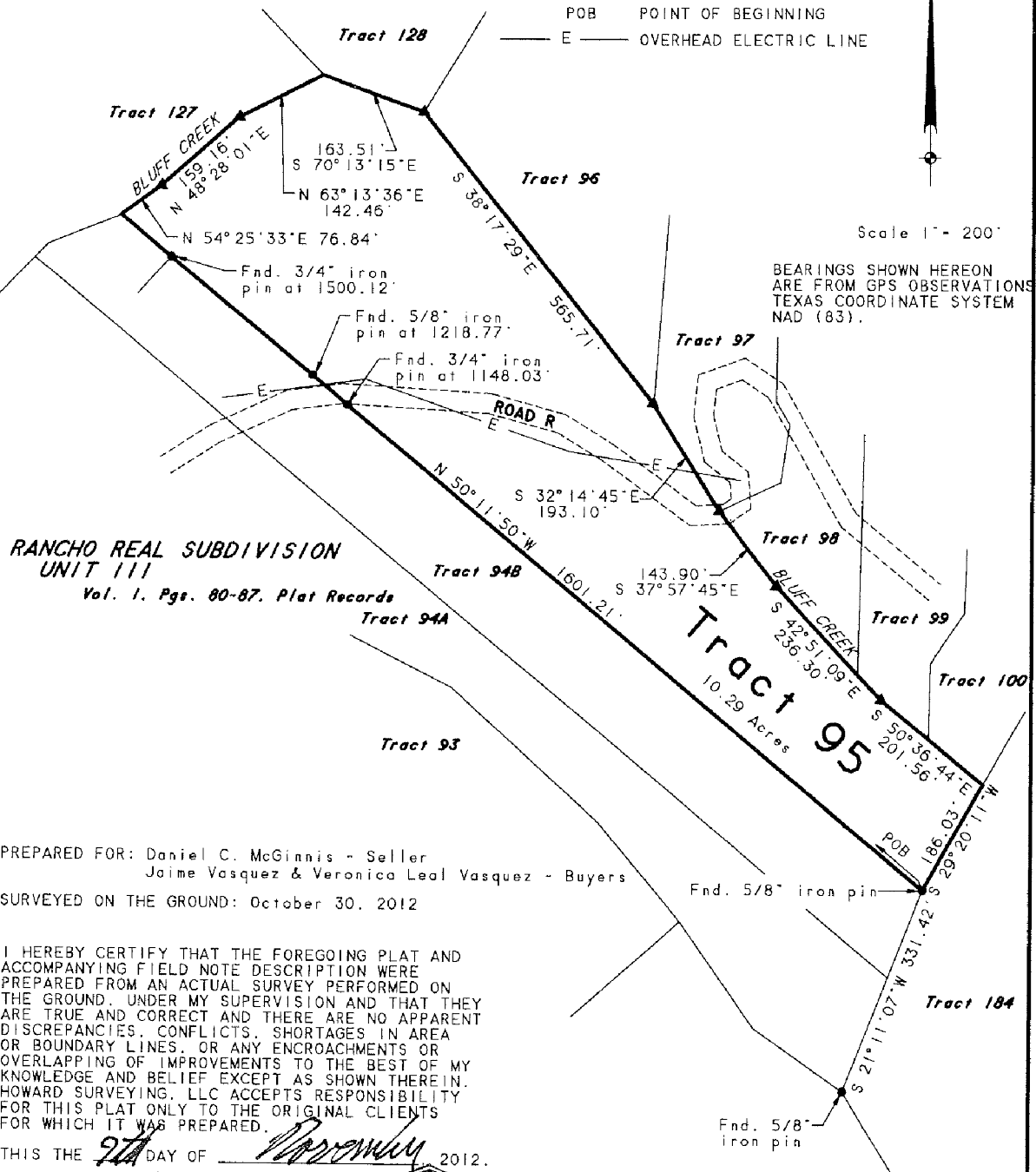
LEGEND:

- xx FENCE LINE
- ANGLE POINT
- POB POINT OF BEGINNING
- E OVERHEAD ELECTRIC LINE

N

Scale 1" = 200'

BEARINGS SHOWN HEREON
ARE FROM GPS OBSERVATIONS
TEXAS COORDINATE SYSTEM
NAD (83).

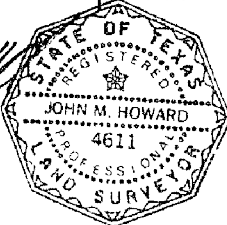


PREPARED FOR: Daniel C. McGinnis - Seller
Jaime Vasquez & Veronica Leal Vasquez - Buyers
SURVEYED ON THE GROUND: October 30, 2012

I HEREBY CERTIFY THAT THE FOREGOING PLAT AND ACCOMPANYING FIELD NOTE DESCRIPTION WERE PREPARED FROM AN ACTUAL SURVEY PERFORMED ON THE GROUND, UNDER MY SUPERVISION AND THAT THEY ARE TRUE AND CORRECT AND THERE ARE NO APPARENT DISCREPANCIES, CONFLICTS, SHORTAGES IN AREA OR BOUNDARY LINES, OR ANY ENCROACHMENTS OR OVERLAPPING OF IMPROVEMENTS TO THE BEST OF MY KNOWLEDGE AND BELIEF EXCEPT AS SHOWN THEREIN. HOWARD SURVEYING, LLC ACCEPTS RESPONSIBILITY FOR THIS PLAT ONLY TO THE ORIGINAL CLIENTS FOR WHICH IT WAS PREPARED.

THIS THE 9th DAY OF November, 2012.

JOHN HOWARD, R.P.L.S. NO. 4611
HOWARD SURVEYING, LLC
402 STATE HWY 173 SOUTH
HONDO, TEXAS 78861
(830) 426-4776



A Plat of Tract 95 of Rancho Real Subdivision Unit III according to the plat thereof recorded in Volume I, Pages 80-87 of the Plat Records of Real County, Texas.

REAL COUNTY, TEXAS

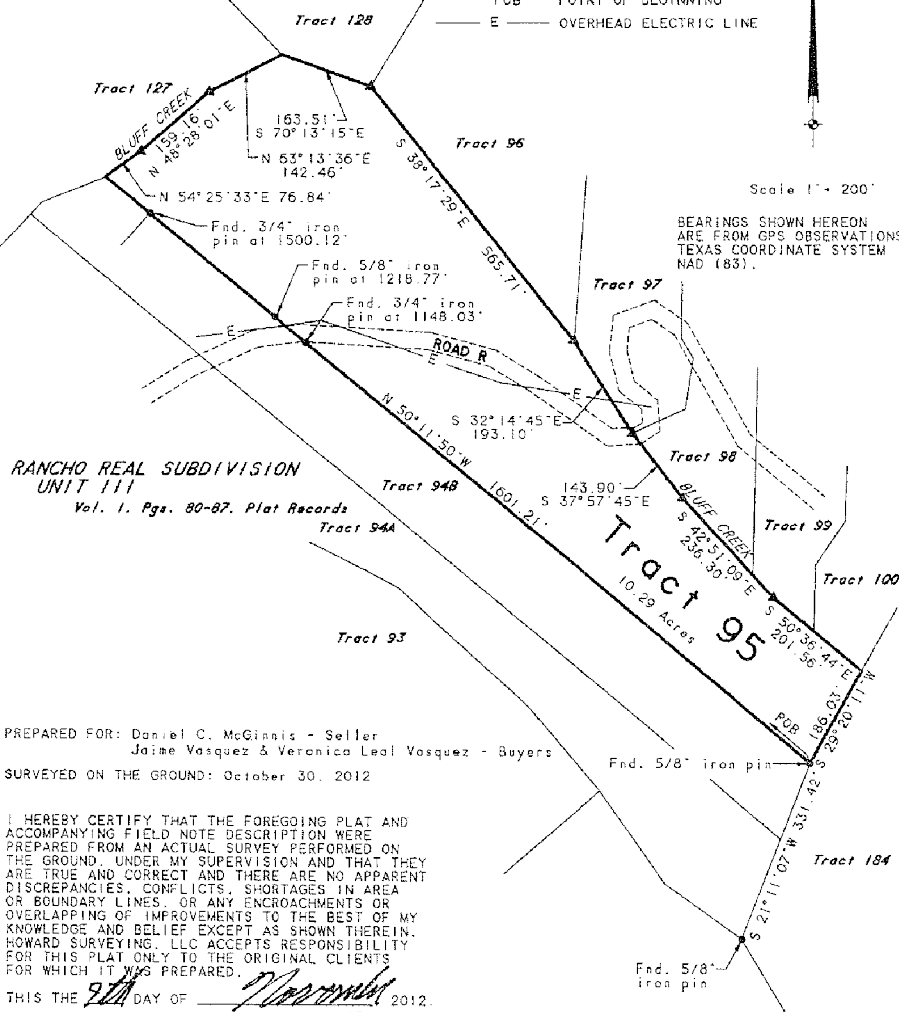
LEGEND:

- xx FENCE LINE
- ▲ ANGLE POINT
- PGB POINT OF BEGINNING
- E OVERHEAD ELECTRIC LINE



Scale 1" = 200'

BEARINGS SHOWN HEREON
ARE FROM GPS OBSERVATIONS
TEXAS COORDINATE SYSTEM
NAD (83).



RANCHO REAL SUBDIVISION
UNIT III

Vol. I, Pgs. 80-87, Plat Records

PREPARED FOR: Daniel C. McGinnis - Seller
Jaime Vasquez & Veronica Leal Vasquez - Buyers
SURVEYED ON THE GROUND: October 30, 2012

I HEREBY CERTIFY THAT THE FOREGOING PLAT AND
ACCOMPANYING FIELD NOTE DESCRIPTION WERE
PREPARED FROM AN ACTUAL SURVEY PERFORMED ON
THE GROUND, UNDER MY SUPERVISION AND THAT THEY
ARE TRUE AND CORRECT AND THERE ARE NO APPARENT
DISCREPANCIES, CONFLICTS, SHORTAGES IN AREA
OR BOUNDARY LINES, OR ANY ENCROACHMENTS OR
OVERLAPPING OF IMPROVEMENTS TO THE BEST OF MY
KNOWLEDGE AND BELIEF EXCEPT AS SHOWN THEREIN.
HOWARD SURVEYING, LLC ACCEPTS RESPONSIBILITY
FOR THIS PLAT ONLY TO THE ORIGINAL CLIENTS
FOR WHICH IT WAS PREPARED.

THIS THE 20th DAY OF November, 2012.

John M. Howard
JOHN M. HOWARD, R.P.L.S., NO. 4611
HOWARD SURVEYING, LLC
402 STATE HWY 173 SOUTH
HONDO, TEXAS 78851
(830) 426-4776



A Plat of Tract 95 of Rancho Real
Subdivision Unit III according to
the plat thereof recorded in Volume
I, Pages 80-87 of the Plat Records
of Real County, Texas.

STATE OF TEXAS
COUNTY OF REAL

PREPARED FOR: Daniel C. McGinnis - Seller
Jaime Vasquez &
Veronica Leal Vasquez - Buyers

FIELD NOTES TO DESCRIBE

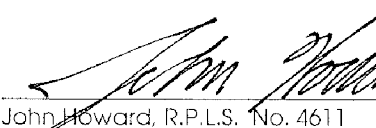
Tract 95 (10.29 Acres) of Rancho Real Subdivision Unit III according to the plat thereof recorded in Volume 1, Pages 80-87 of the Plat Records of Real County, Texas, and being more particularly described as follows:

- BEGINNING: At a 5/8" iron pin found in the Northwest line of Tract 184 for the East corner of Tract 94B and the South corner of this tract from which a 5/8" iron pin found for the South corner of Tract 94A bears S 21° 11' 07" W 331.42 feet;
- THENCE: N 50° 11' 50" W 1601.21 feet, at 1148.03 feet pass a found 3/4" iron pin, at 1218.77 feet pass a 5/8" found iron pin and at 1500.12 feet pass a found 3/4" iron pin, continuing to the North corner of Tract 94B and the West corner of this tract;
- THENCE: With Bluff Creek and the Southeast line of Tract 127 and the Northwest line of this tract as follows:
- N 54° 25' 33" E 76.84 feet to an angle point;
N 48° 28' 01" E 159.16 feet to an angle point;
N 63° 13' 36" E 142.46 feet to the East corner of Tract 127, the Southwest corner of Tract 128 and the North corner of this tract;
- THENCE: S 70° 13' 15" E 163.51 feet with Bluff Creek to the South corner of Tract 128 and the West corner of Tract 96 and an angle point of this tract;
- THENCE: With Bluff Creek and the Southwest line of Tracts 96-99 as follows:
- S 38° 17' 29" E 565.71 feet to the South corner of Tract 96 and the West corner of Tract 97 and an angle point of this tract;
S 32° 14' 45" E 193.10 feet to the South corner of Tract 97 and the West corner of Tract 98 and an angle point of this tract;
S 37° 57' 45" E 143.90 feet to an angle point;
S 42° 51' 09" E 236.30 feet to an angle point;
S 50° 36' 44" E 201.56 feet to the South corner of Tract 100 and the East corner of this tract;
- THENCE: S 29° 20' 11" W 186.03 feet with the Northwest line of Tract 184 to the POINT OF BEGINNING.

Bearings shown herein are from GPS observations Texas Coordinate System NAD (83).

I hereby certify that the foregoing field note description and accompanying plat were prepared from an actual survey performed on the ground, under my supervision and that to the best of my belief and knowledge they are true and correct.

This the 9th day of November, 2012.


John Howard, R.P.L.S. No. 4611
Howard Surveying, LLC
402 State Highway 173 South
Hondo, Texas 78861
(830) 426-4776

