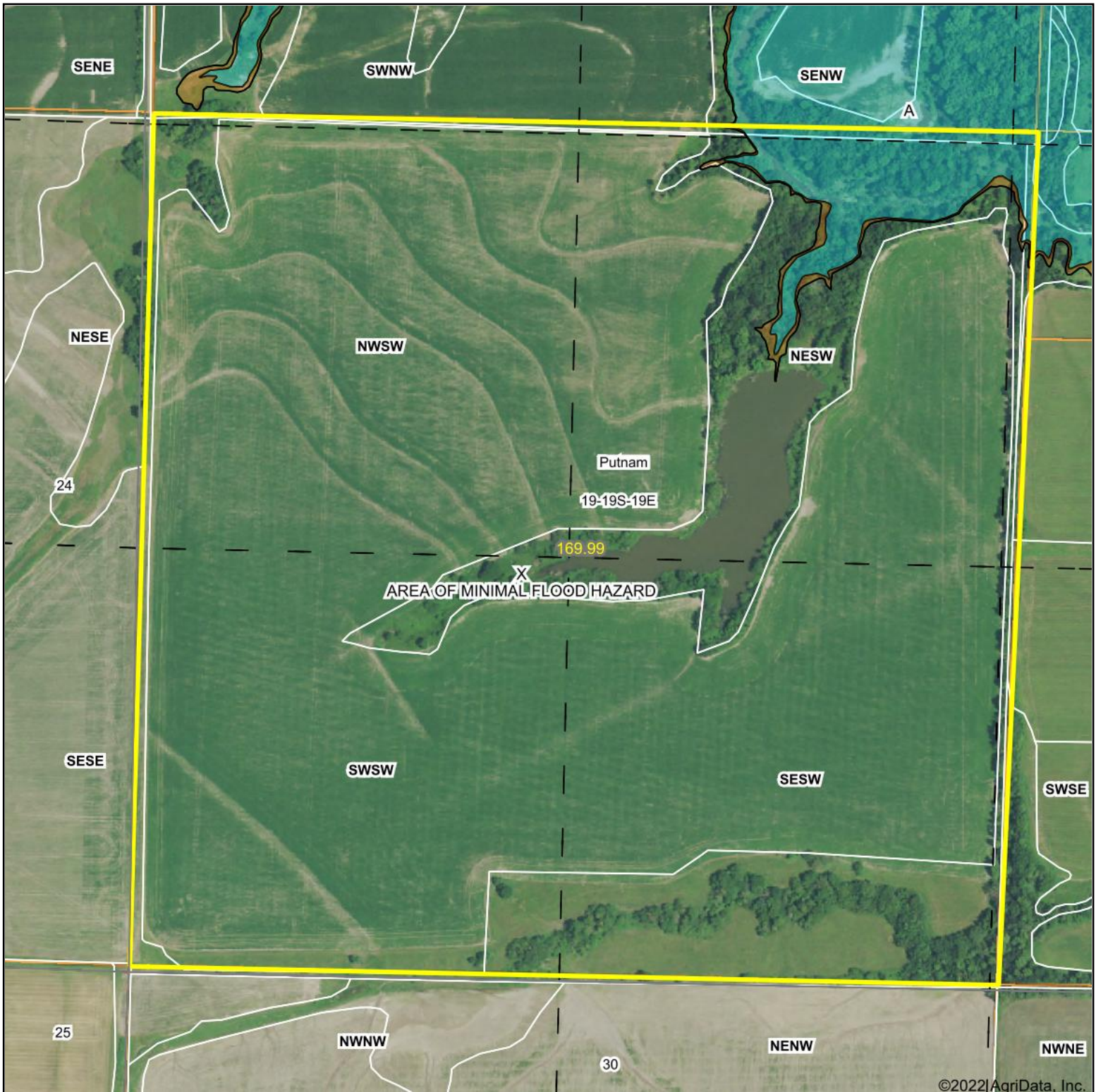


Aerial Map



Map Center: 38° 22' 45.45, -95° 21' 20.53

0ft 489ft 979ft

19-19S-19E
Anderson County
Kansas



Maps Provided By:
surety
CUSTOMIZED ONLINE MAPPING
© AgriData, Inc. 2021 www.AgriDataInc.com

Field borders provided by Farm Service Agency as of 5/21/2008. Flood related information provided by FEMA