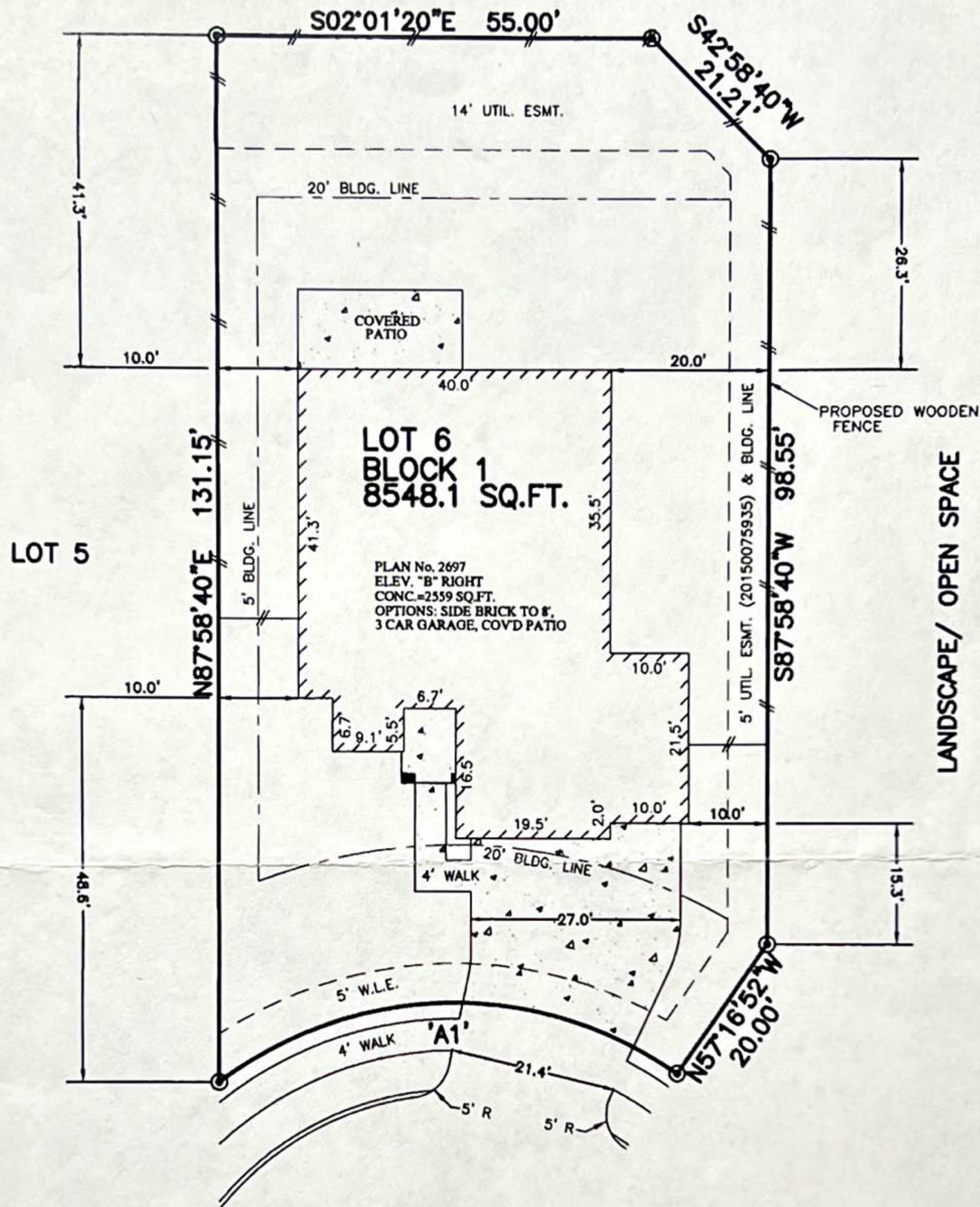


ARC TABLE				
ARC	LEN.	RAD.	CHRD.	BRG.
'A1'	62.63'	50.00'		S03°09'53"E

LANDSCAPE/ OPEN SPACE



16202 TYLER REACH DRIVE
(CUL-DE-SAC)
28' CONCRETE PAVEMENT

- NOTES:
1. ALL BEARINGS SHOWN HEREON ARE BASED ON THE RECORDED PLAT.
 2. THIS PLOT PLAN WAS PREPARED WITHOUT BENEFIT OF A TITLE REPORT. THERE MAY BE EASEMENTS, BUILDING LINES & OTHER MATTERS OF RECORD NOT SHOWN HEREON. SURVEYOR OR ALLPOINTS SERVICES CORP. IS NOT LIABLE FOR ANY DAMAGES THAT MAY INCUR IN ANY EVENT THE BUILDER BUILDS ANY IMPROVEMENTS CLOSER THAN 5.0' OR WITHIN AN EASEMENT.

PLOT PLAN
SCALE: 1 = 20'

LOT 8548.1 SQ.FT.
SLAB 2559 SQ.FT.
FLATWORK 1095 SQ.FT.
SOD 5567 SQ.FT.
LOT COVERAGE: 29.21

©2015, ALLPOINTS SERVICES CORP., ALL RIGHTS RESERVED

CASTLE ROCK COMMUNITIES
ADDRESS:
16202 TYLER REACH DRIVE
ALLPOINTS JOB #: CR96409 SS
G.F.: NH



ALLPOINTS
SERVICES CORP
PHONE: 713-468-7707
FAX: 713-827-1861

LOT 6, BLOCK 1,
STONE CREEK RANCH, SECTION 5,
FILM CODE No. 670245, MAP RECORDS
HARRIS COUNTY, TEXAS

ISSUE DATE: 4/24/2015
ISSUE DATE: 4/10/2015

CASTLE ROCK



COMMUNITIES

ALLPOINTS SERVICES CORP. COMMERCIAL/BUILDER DIVISION 1515 WITTE ROAD HOUSTON, TEXAS 77080