

127.90± ACRES IN HOLMES COUNTY, MS
\$299,900



SMALLTOWN
HUNTING PROPERTIES
& REAL ESTATESM

Office 769-888-2522

Property Profile

The Holmes 127.90

Location:

- Holmes County, MS
- Fronts Mississippi State Highway 14
- 1.4± Miles Northwest of Goodman

Coordinates:

- 32.9553, -89.8949

Property Information:

- 127.90± Acres
- Nearly One Mile Big Black River Frontage
- Pole Barn in Place
- Power on Site
- Sand Bar for Summer Use
- Three Box Stands in Place

Property Use:

- Excellent Deer Hunting
- Great Fishing
- Duck Hunting
- Recreational

Tax Information: 2021 \$561.45

- Parcel 1: 025-21-00800
- Parcel 2: 025-28-00100



SMALLTOWN
HUNTING PROPERTIES
& REAL ESTATESM

MICHAEL OSWALT

PRINCIPAL BROKER | Licensed in MS and AR

C: 662-719-3967

O: 769-888-2522

michael@smalltownproperties.com

P.O. Box K - Flora, MS 39071



Welcome to BIG BLACK RIVER HUNTING in Holmes County, MS! This bottomland property features nearly 1 mile of frontage along the west side of the Big Black River just east of Goodman. When talking hunting with local whitetail hunters, the Big Black River quickly becomes a topic. The river basin continuously produces big bucks year after year. This particular property is thick which will hold and grow those giants, but you've also got the river frontage as a natural travel corridor during the rut. A transmission line and pipeline cut the property from east to west creating a huge wildlife plot equipped with a sportsman condo box stand. This combination should be deadly for many seasons to come.



SMALLTOWN
HUNTING PROPERTIES
& REAL ESTATESM

MICHAEL OSWALT
PRINCIPAL BROKER | *Licensed in MS and AR*
C: 662-719-3967
O: 769-888-2522
michael@smalltownproperties.com
P.O. Box K - Flora, MS 39071



A few sloughs meander the property creating duck hunting opportunities when the timing is right (owner has gotten ducks off the sloughs). As you enter the gate you will notice a pole barn with electricity and gravel parking lot for all your land maintenance needs. There is a main road in place dissecting the property from north to south. Once you get to the southern end you will find a beautiful sandbar for all your summertime fun and fishing needs (the catfishing is amazing on the Big Black River).



SMALLTOWN
HUNTING PROPERTIES
& REAL ESTATESM

MICHAEL OSWALT

PRINCIPAL BROKER | *Licensed in MS and AR*

C: 662-719-3967

O: 769-888-2522

michael@smalltownproperties.com

P.O. Box K - Flora, MS 39071



SMALLTOWN
HUNTING PROPERTIES
& REAL ESTATESM

MICHAEL OSWALT


PRINCIPAL BROKER | *Licensed in MS and AR*

C: 662-719-3967

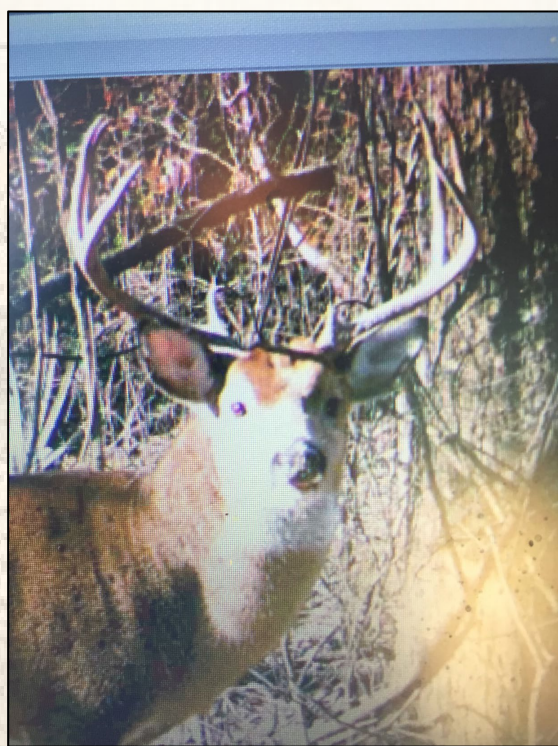
O: 769-888-2522

michael@smalltownproperties.com

P.O. Box K - Flora, MS 39071

 15,000+ Followers

Information is believed to be accurate but not guaranteed.



SMALLTOWN
HUNTING PROPERTIES
& REAL ESTATESM

MICHAEL OSWALT

PRINCIPAL BROKER | *Licensed in MS and AR*

C: 662-719-3967

O: 769-888-2522

michael@smalltownproperties.com

P.O. Box K - Flora, MS 39071

15,000+ Followers

Information is believed to be accurate but not guaranteed.

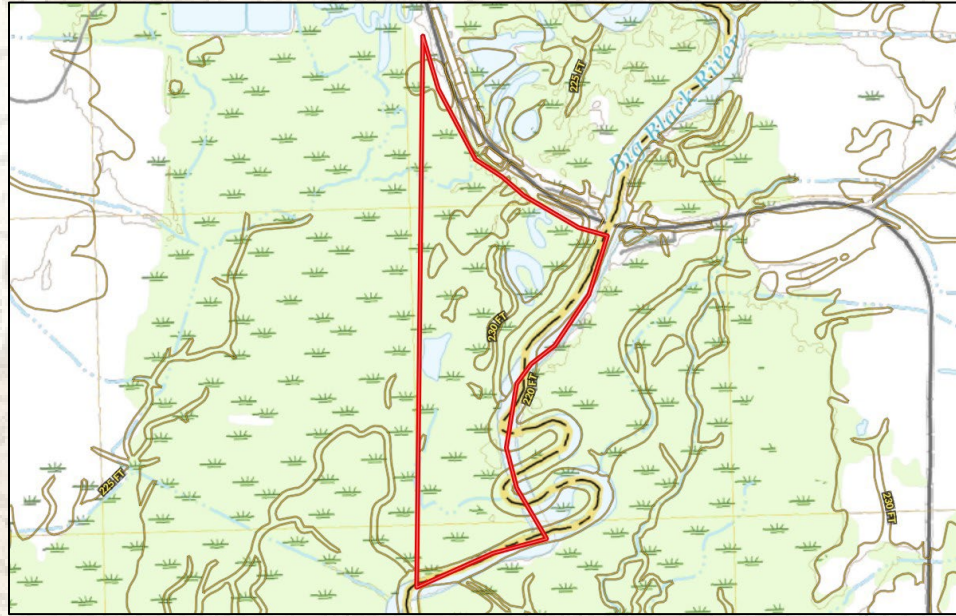


- Boundary Consists of 127.90± Acres
- Flood Zone per FEMA MAP
- Borders the Big Black River
- Approx 1.4 Miles NW of Goodman, MS

MapRight Link



The property is located within a flood zone as is most all land in the Big Black River basin (see flood map).



SMALLTOWN
HUNTING PROPERTIES
& REAL ESTATESM

MICHAEL OSWALT

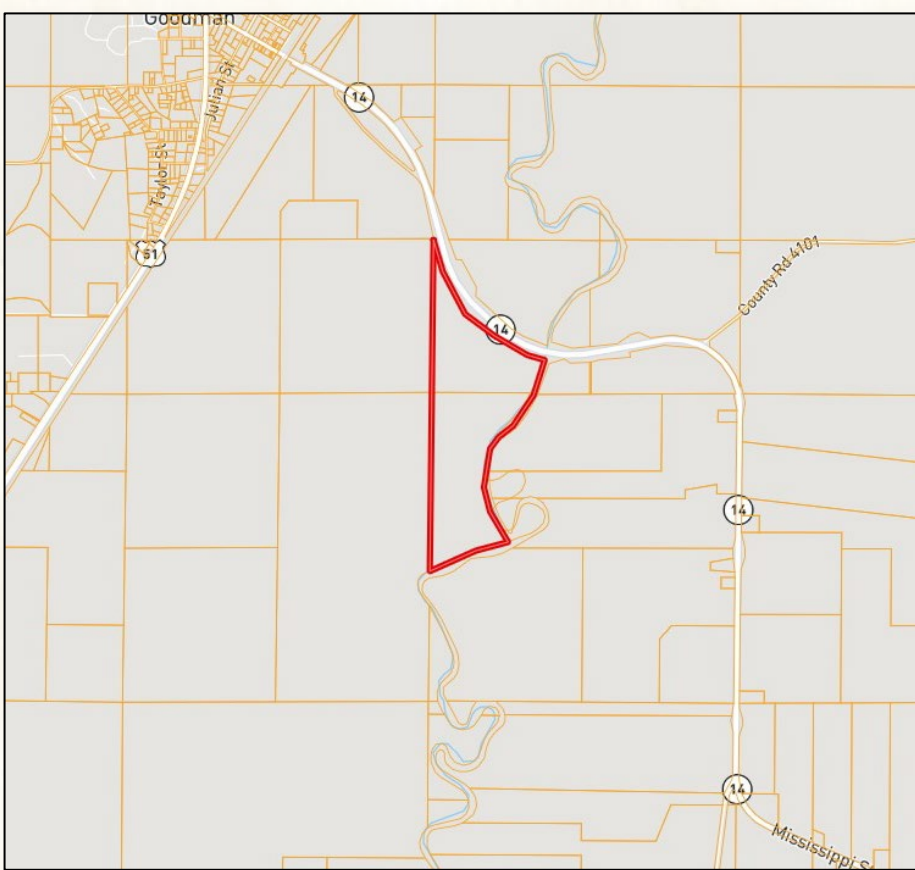
PRINCIPAL BROKER | *Licensed in MS and AR*

C: 662-719-3967

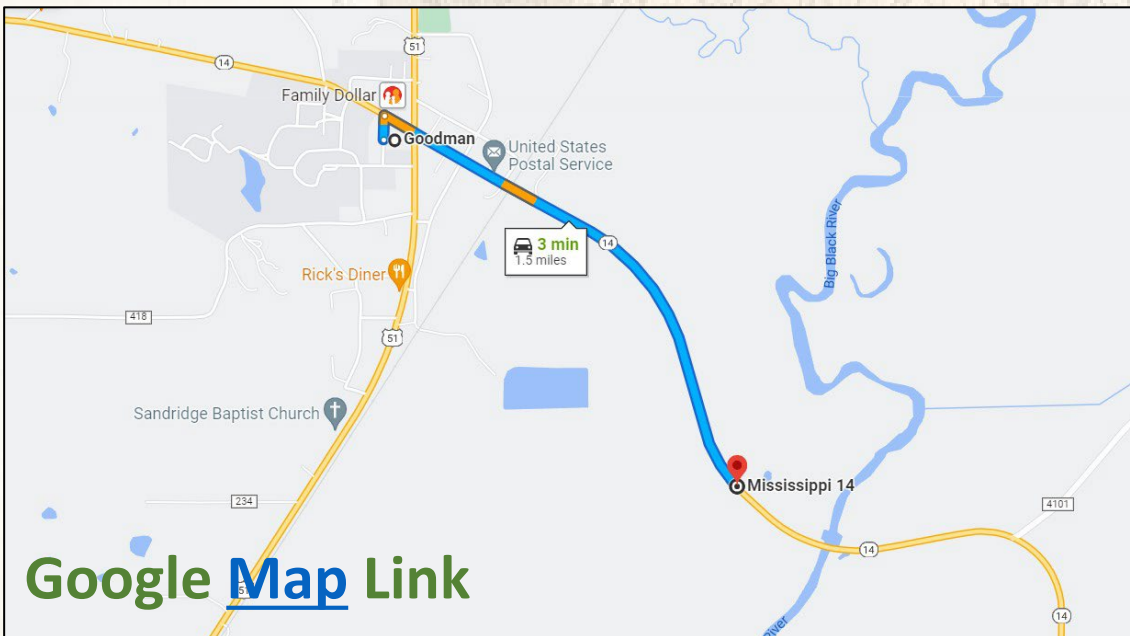
O: 769-888-2522

michael@smalltownproperties.com

P.O. Box K - Flora, MS 39071



If you have been looking for a property along the Big Black River that can provide year-round fun, call Michael Oswalt for your private tour today!



[Google Map Link](#)



SMALLTOWN
HUNTING PROPERTIES
& REAL ESTATESM

MICHAEL OSWALT

PRINCIPAL BROKER | *Licensed in MS and AR*

C: 662-719-3967

O: 769-888-2522

michael@smalltownproperties.com

P.O. Box K - Flora, MS 39071

15,000+ Followers

Information is believed to be accurate but not guaranteed.