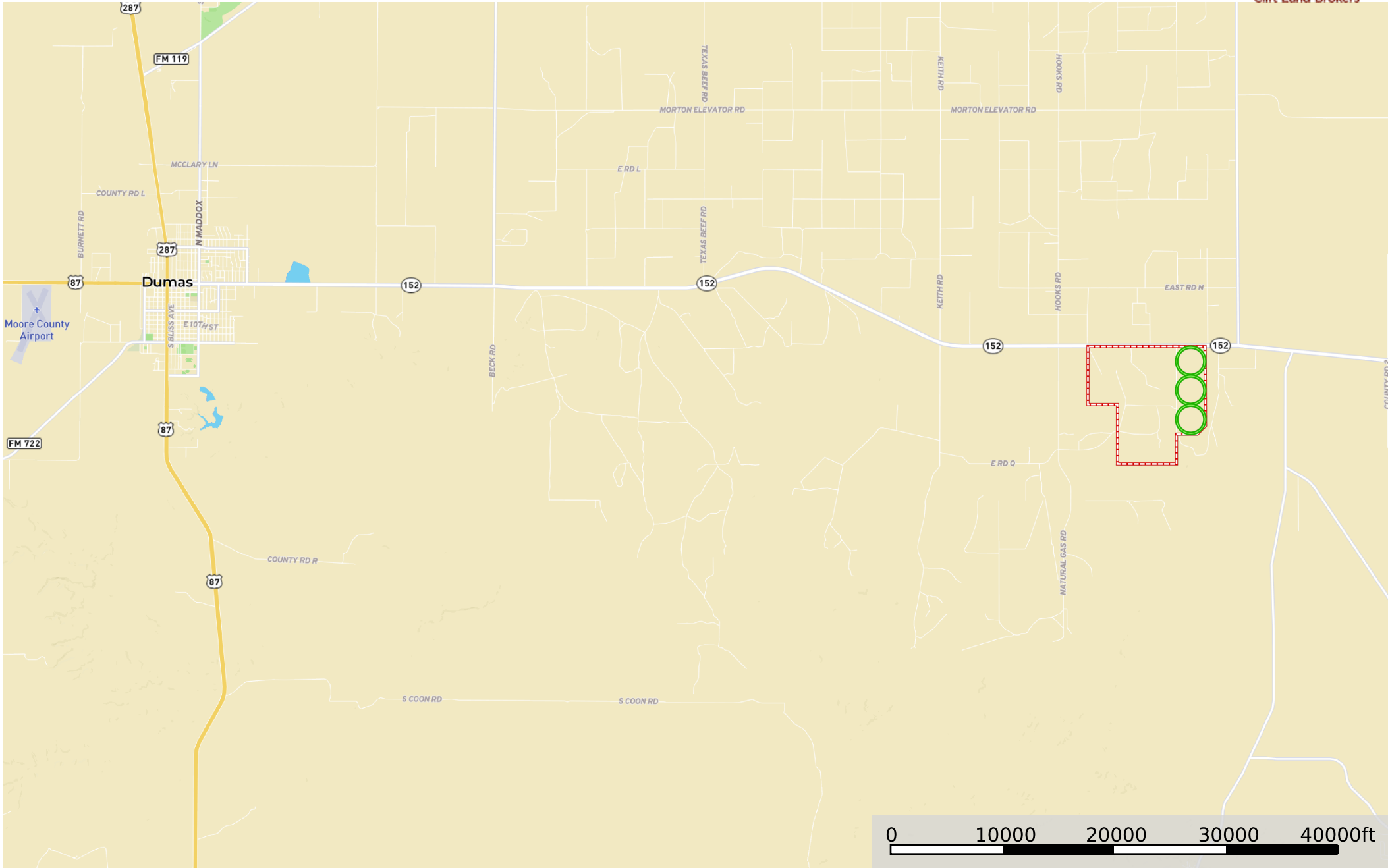


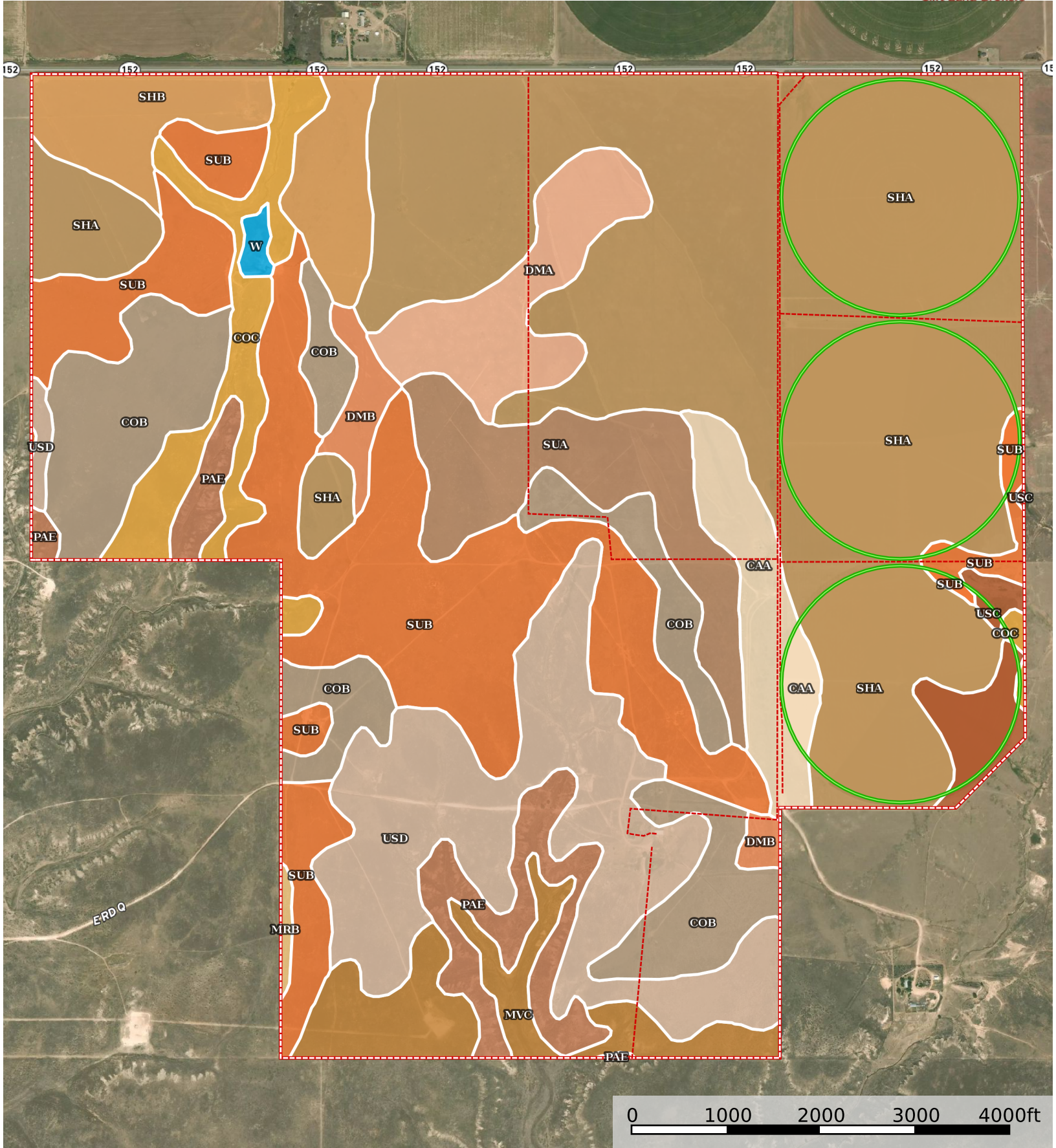


- Quonset Barn
- Pens
- House
- Gate
- Windmill
- Stock / Domestic
- Irrigation Well
- Trough
- Water Line
- Fence
- Boundary
- Pivot



 Boundary  Pivot





Fence Boundary Pivot

|○ All Polygons 2379.93 ac

SOIL CODE	SOIL DESCRIPTION	ACRES	%	CPI	NCCPI	CAP
ShA	Sherm silty clay loam, 0 to 1 percent slopes	1036.75	43.56	0	47	2s
SuB	Sunray loam, 1 to 3 percent slopes	323.19	13.58	0	50	2e
UsD	Paloduro-Sunray complex, 5 to 8 percent slopes	215.42	9.05	0	49	6e
CoB	Conlen loam, 1 to 3 percent slopes	187.77	7.89	0	31	4e
SuA	Sunray loam, 0 to 1 percent slopes	97.4	4.09	0	50	2e
ShB	Sherm silty clay loam, 1 to 3 percent slopes	86.25	3.62	0	47	3e
MvC	Mobeetie-Veal-Potter complex, 3 to 20 percent slopes	73.62	3.09	0	35	6e
CoC	Conlen loam, 3 to 5 percent slopes	70.95	2.98	0	30	3e
PaE	Pastura-Veal complex, 1 to 25 percent slopes, warm	70.82	2.98	0	22	7e
DmA	Dumas loam, 0 to 1 percent slopes	70.54	2.96	0	59	2c
CaA	Capps clay loam, 0 to 1 percent slopes	68.78	2.89	0	58	3e
UsC	Paloduro-Sunray complex, 3 to 5 percent slopes	48.16	2.02	0	49	4e
DmB	Dumas loam, 1 to 3 percent slopes	22.05	0.93	0	58	2e
W	Water	4.6	0.19	0	-	-
MrB	Mobeetie fine sandy loam, 1 to 3 percent slopes, cool	3.38	0.14	0	38	3e
Ro	Rough broken land	0.25	0.01	0	-	7s
TOTALS		2379.93(*)	100%	-	45.53	2.93

(*) Total acres may differ in the second decimal compared to the sum of each acreage soil. This is due to a round error because we only show the acres of each soil with two decimal.

|○ Pivot 114.9 ac

SOIL CODE	SOIL DESCRIPTION	ACRES	%	CPI	NCCPI	CAP
ShA	Sherm silty clay loam, 0 to 1 percent slopes	111.28	96.85	0	47	2s
SuB	Sunray loam, 1 to 3 percent slopes	3.62	3.15	0	50	2e
TOTALS		2379.93(*)	100%	-	47.09	2.0

(*) Total acres may differ in the second decimal compared to the sum of each acreage soil. This is due to a round error because we only show the acres of each soil with two decimal.

|○ Pivot 114.48 ac

SOIL CODE	SOIL DESCRIPTION	ACRES	%	CPI	NCCPI	CAP
ShA	Sherm silty clay loam, 0 to 1 percent slopes	84.0	73.38	0	47	2s
UsC	Paloduro-Sunray complex, 3 to 5 percent slopes	19.64	17.16	0	49	4e

CaA	Capps clay loam, 0 to 1 percent slopes	8.83	7.71	0	58	3e
SuB	Sunray loam, 1 to 3 percent slopes	1.49	1.3	0	50	2e
CoC	Conlen loam, 3 to 5 percent slopes	0.52	0.45	0	30	3e
TOTALS		2379.93(*)	100%	-	48.15	2.42

(*) Total acres may differ in the second decimal compared to the sum of each acreage soil. This is due to a round error because we only show the acres of each soil with two decimal.

Pivot 113.63 ac

SOIL CODE	SOIL DESCRIPTION	ACRES	%	CPI	NCCPI	CAP
ShA	Sherm silty clay loam, 0 to 1 percent slopes	113.63	100.0	0	47	2s
TOTALS		2379.93(*)	100%	-	47.0	2.0

(*) Total acres may differ in the second decimal compared to the sum of each acreage soil. This is due to a round error because we only show the acres of each soil with two decimal.

Boundary 2036.92 ac

SOIL CODE	SOIL DESCRIPTION	ACRES	%	CPI	NCCPI	CAP
ShA	Sherm silty clay loam, 0 to 1 percent slopes	727.84	35.73	0	47	2s
SuB	Sunray loam, 1 to 3 percent slopes	318.08	15.62	0	50	2e
UsD	Paloduro-Sunray complex, 5 to 8 percent slopes	215.42	10.58	0	49	6e
CoB	Conlen loam, 1 to 3 percent slopes	187.77	9.22	0	31	4e
SuA	Sunray loam, 0 to 1 percent slopes	97.4	4.78	0	50	2e
ShB	Sherm silty clay loam, 1 to 3 percent slopes	86.25	4.23	0	47	3e
MvC	Mobeetie-Veal-Potter complex, 3 to 20 percent slopes	73.62	3.61	0	35	6e
PaE	Pastura-Veal complex, 1 to 25 percent slopes, warm	70.82	3.48	0	22	7e
DmA	Dumas loam, 0 to 1 percent slopes	70.54	3.46	0	59	2c
CoC	Conlen loam, 3 to 5 percent slopes	70.43	3.46	0	30	3e
CaA	Capps clay loam, 0 to 1 percent slopes	59.95	2.94	0	58	3e
UsC	Paloduro-Sunray complex, 3 to 5 percent slopes	28.52	1.4	0	49	4e
DmB	Dumas loam, 1 to 3 percent slopes	22.05	1.08	0	58	2e
W	Water	4.6	0.23	0	-	-
MrB	Mobeetie fine sandy loam, 1 to 3 percent slopes, cool	3.38	0.17	0	38	3e
Ro	Rough broken land	0.25	0.01	0	-	7s
TOTALS		2379.93(*)	100%	-	45.22	3.06

(*) Total acres may differ in the second decimal compared to the sum of each acreage soil. This is due to a round error because we only

show the acres of each soil with two decimal.

