

Hatch NM Farm

443.9± acres | \$2,900,000 | Hatch, New Mexico | Doña Ana County



Chas. S. Middleton

— AND SON LLC —

FARM - RANCH SALES AND APPRAISALS

Est. 1920

Hatch NM Farm

We are proud to announce our exclusive listing of the Hatch New Mexico Farm. This farm has been in the same family ownership since 1926. Anyone who has experienced New Mexico's famous Green Chile, knows that Hatch has aptly named itself "Chile Capital of the World". This farm produces not only green chile, but also produces corn, alfalfa, onions, and cotton, amongst other crops. The Mesilla/Hatch Valley is also world renown for pecans. Although not in production at this time, owners believe the farm could easily support pecan production.

Location

The farm has excellent access off I-25 and State Highway #187. It is located ½ mile from the community of Hatch itself and Las Cruces New Mexico is a mere 39 miles south. El Paso, Texas is the largest city near the farm and the El Paso International Airport is 90 miles south. Las Cruces provides all major services other than an international airport and is home to New Mexico State University, the State's second largest university. The newest installation to the immediate area is the Spaceport owned and operated by the New Mexico Spaceport Authority. The Spaceport exit is a mere 9 miles from the farm and another 23 miles to the launch pad. Hatch is the most easily accessed community from the Spaceport.





Water Features

The three prominent requirements for farming production are ample water, productive soils, and solid management of the water and soils. The water on the Hatch Farm is provided by canals from the Elephant Butte Irrigation District (EBID) and sub-surface water from a total of seven wells. The total EBID diversion per NM State Engineer records is 447.36-acre feet. The total diversion via sub-surface water per NM State Engineer records is 1,017.415-acre feet. The total diversion between EBID and sub-surface water is 1,464.775 acre feet. A Notice of Intent to Demonstrate Beneficial Use of Water (NOI 215) supporting a farm delivery requirement (FDR) greater than 4.5 acre-feet per year up to 5.5 acre- feet has been filed with the NM State Engineers Office.

Water is provided to fields via shallow wells and EBID canal. Sub-surface water to wells flows into above and below ground pipeline that then flows into concrete and dirt ditches with turnouts for water to be applied to the fields. The seven (7) wells on this farm produce from 1,000 to 2,200 gallons per minute. To summarize, there is an ample amount of water allocated by both the EBID and NMSEO office to irrigate the farm for strong crop yields.





Property Details

The elevation of the Hatch NM Farm is approximately 4,060'. Irrigated fields are level, and the farm has a road network providing good access throughout. The growing season in the valley is generally 7 months. Real estate taxes on the farm were \$2,454 in 2020.













Regional Notes

The Hatch Valley and Mesilla Valley region is experiencing moderate population growth and the Hatch/Mesilla Valley is number one (1) in New Mexico for crop production. Many outside sources of stable income are available to the region. Outside employment sources include but are not limited to White Sands Missile Range and its subsidiary military installations, NMSU and its subsidiaries, County and State Government offices, Federal offices, and one of the newest installations is the Spaceport owned and operated by the New Mexico Spaceport Authority.

Summary

If you are in the market for a great farm located in the “World’s Chile Capital” you cannot pass up an onsite visit to the Hatch New Mexico Farm. This property is realistically priced at \$2,900,000. This is a property you must see to truly appreciate.

For more information or to schedule a showing,
please contact Jim Welles at (505) 967.6562 or Dwain Nunez at (505) 263.7868.





Winston

52

Elephant Butte

Truth or
Consequences

152

152

25

25

25

25

25

27

26

Cookes Range
Wilderness
Study Area

Hatch NM Farm

Jornada
Experimental
Range

San Andres National
Wildlife Refuge

Zone of
Cooperative Use

70

Deming

Las Cruces

Mesilla

LRU

Fort Bliss

11

11

Florida Mountains
Wilderness
Study Area

Organ Mountains-
Desert Peaks
National Monument

Chamberino

Anthony

Vinton

Franklin Mountains
State Park

Columbus

Puerto
Palomas

El Paso

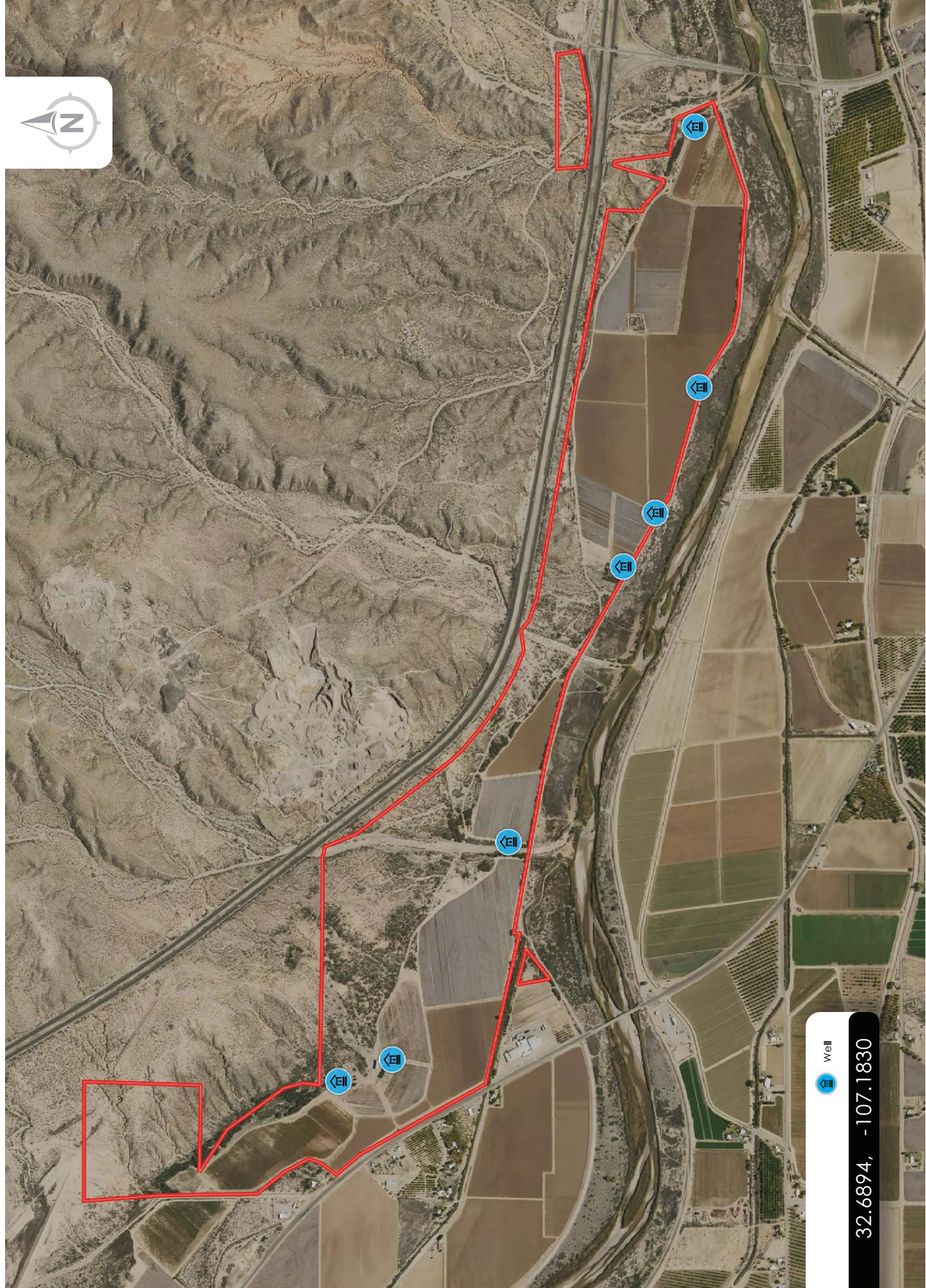


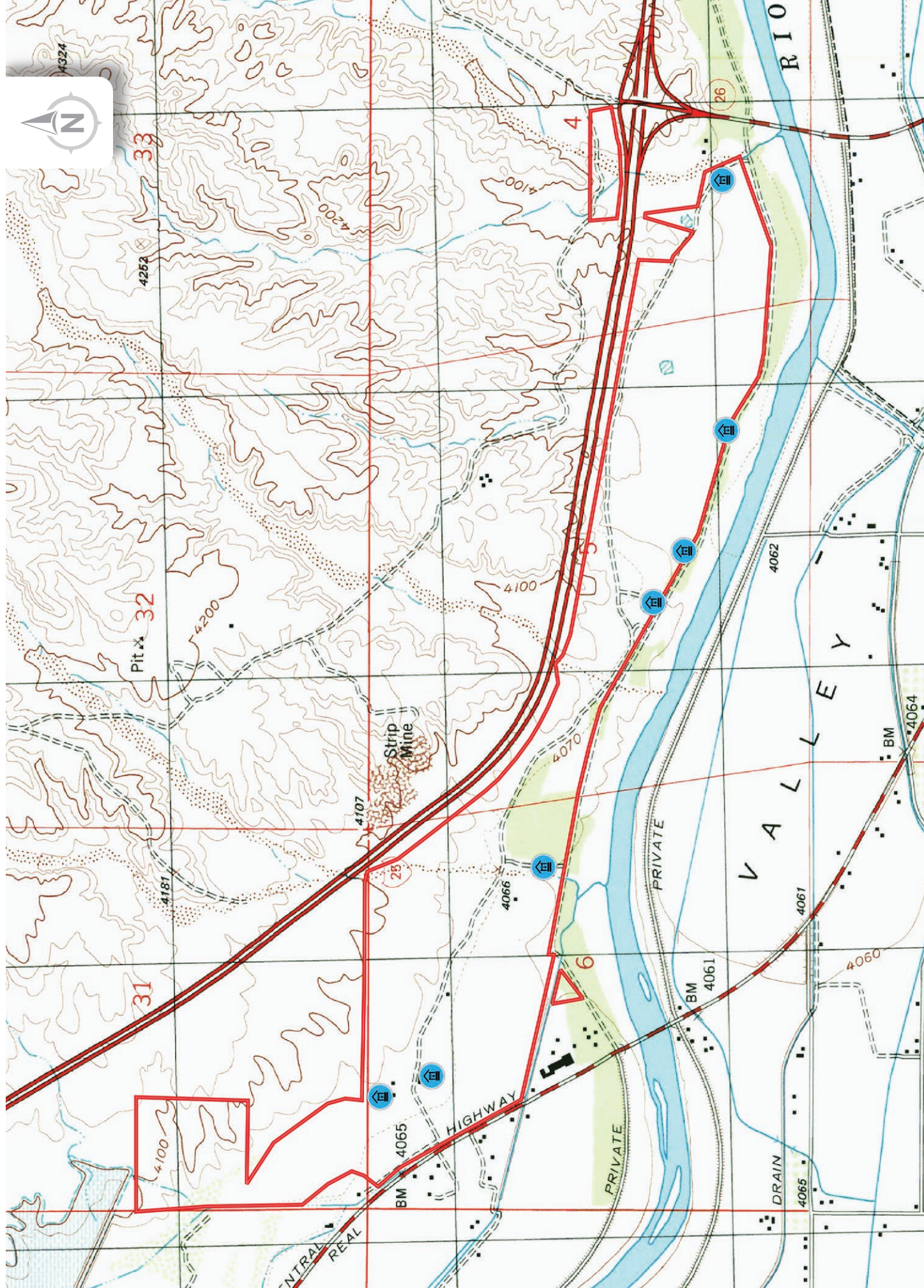
old
ss



Well

32.6894, -107.1830





Chas. S. Middleton

AND SON LLC

FARM - RANCH SALES AND APPRAISALS

Est. 1920

James (Jim) Welles

Associate Real Estate Broker • NM

(505) 967.6562
jjim@csmansion.com

Dwain Nunez

Associate Real Estate Broker • NM

(505) 263.7868
dwain@csmansion.com

(806) 763.5331

chasmiddleton.com



YouTube

