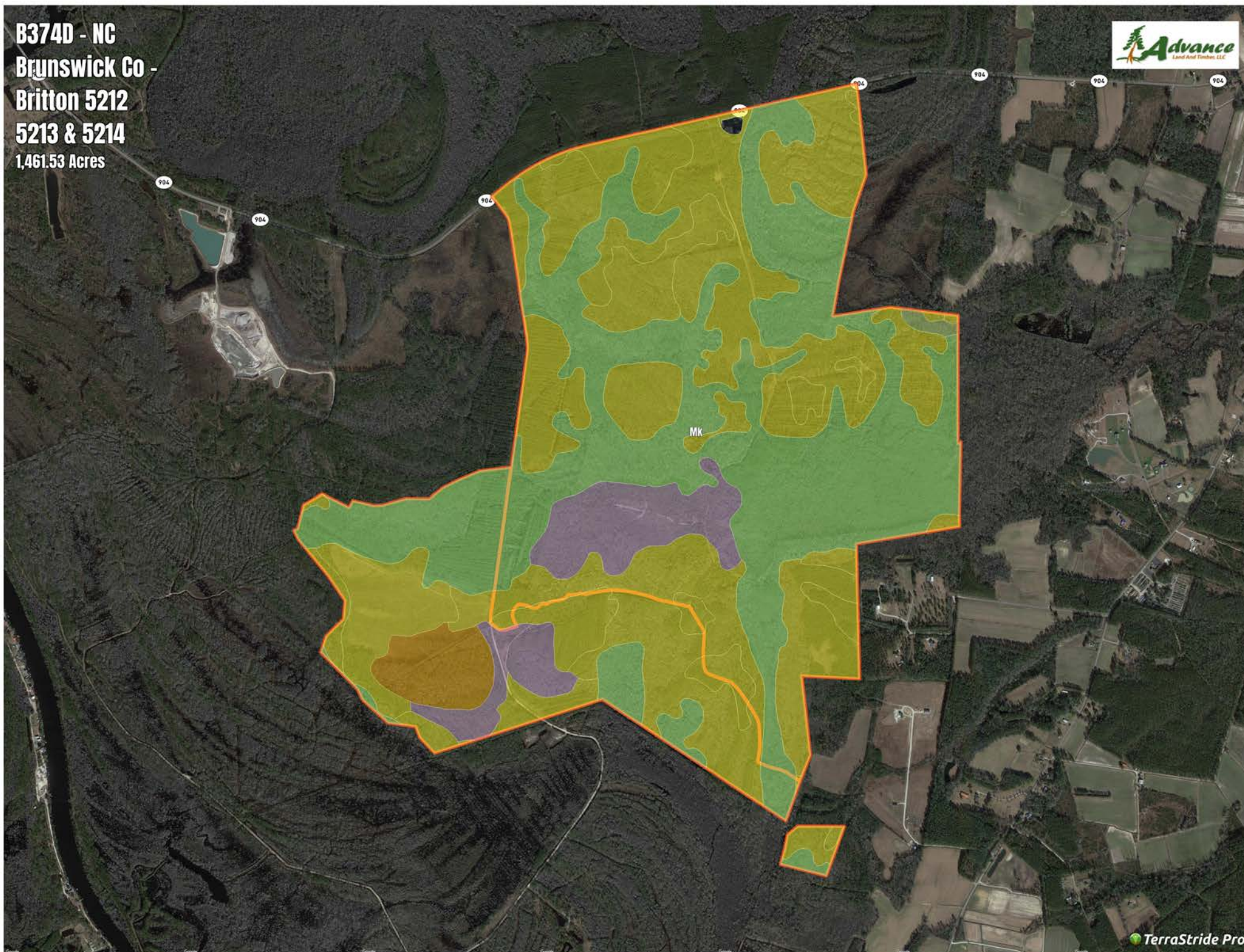


B374D - NC
Brunswick Co -
Britton 5212
5213 & 5214
1,461.53 Acres



B374D - NC Brunswick Co - Britton 5212 5213 & 5214

Soil Report

Symbol	Map Unit Description	Fa rm la n d cla s s	Are a (AC)	Ava ila ble Wa te r S to ra ge (0-150cm - We ighte d Ave ra ge)	Flooding Fre que ncy (Ma ximum)	Dra ina ge Cla s s (Domina nt Condition)	Dra ina ge Cla s s (We tte s t Compone nt)	Hydric Cla s s ifica tion	Wa te r Ta ble De pth (Annua l Minimum)	Wa te r Ta ble De pth (April to June Minimum)	Be drock De pth (Minimum)	So il Orde r
Mk	Muckalee loam	Not prime farmland	0	16.2	Frequent	Poorly drained	Poorly drained	80	15	23	0	Entisols
Lu	Lumbee fine sandy loam	Prime farmland if drained	0	15.4	Rare	Poorly drained	Poorly drained	90	0	81	0	Ultisols
Jo	Johns fine sandy loam	Prime farmland if drained	0	15.8	None	Modera tely we ll drained	Modera tely we ll drained	5	61	76	0	Ultisols
Lo	Leon fine sand	Fa rm la n d of unique importance	0	10.3	None	Poorly drained	Poorly drained	85	15	15	0	Spodosols
NoB	Norfolk loamy fine sand, 2 to 6 percent slopes	All areas are prime farmland	0	19.3	None	Well drained	Well drained	4	122	152	0	Ultisols
To	Torhunta mucky fine sandy loam	Prime farmland if drained	0	13.9	None	Very poorly drained	Very poorly drained	90	0	81	0	Inceptisols
Ma	Mandarin fine sand	Not prime farmland	0	11.9	None	Some what poorly drained	Some what poorly drained	5	46	91	0	Spodosols
Mu	Murville mucky fine sand	Fa rm la n d of unique importance	0	15.6	Rare	Very poorly drained	Very poorly drained	80	0	0	0	Spodosols
Ly	Lynchburg fine sandy loam	Prime farmland if drained	0	18.8	None	Some what poorly drained	Some what poorly drained	7	15	76	0	Ultisols
Ra	Rains fine sandy loam	Prime farmland if drained	0	23.6	None	Poorly drained	Poorly drained	90	15	46	0	Ultisols
Gt	Gifton fine sandy loam	Prime farmland if drained	0	20.7	None	Poorly drained	Poorly drained	90	0	15	0	Alfisols
W	Water	Not prime farmland	0	0.0	None			0	0	0	0	
BaB	Baymeade fine sand, 1 to 6 percent slopes	Fa rm la n d of statewide importance	0	9.6	None	Well drained	Well drained	8	122	152	0	Ultisols