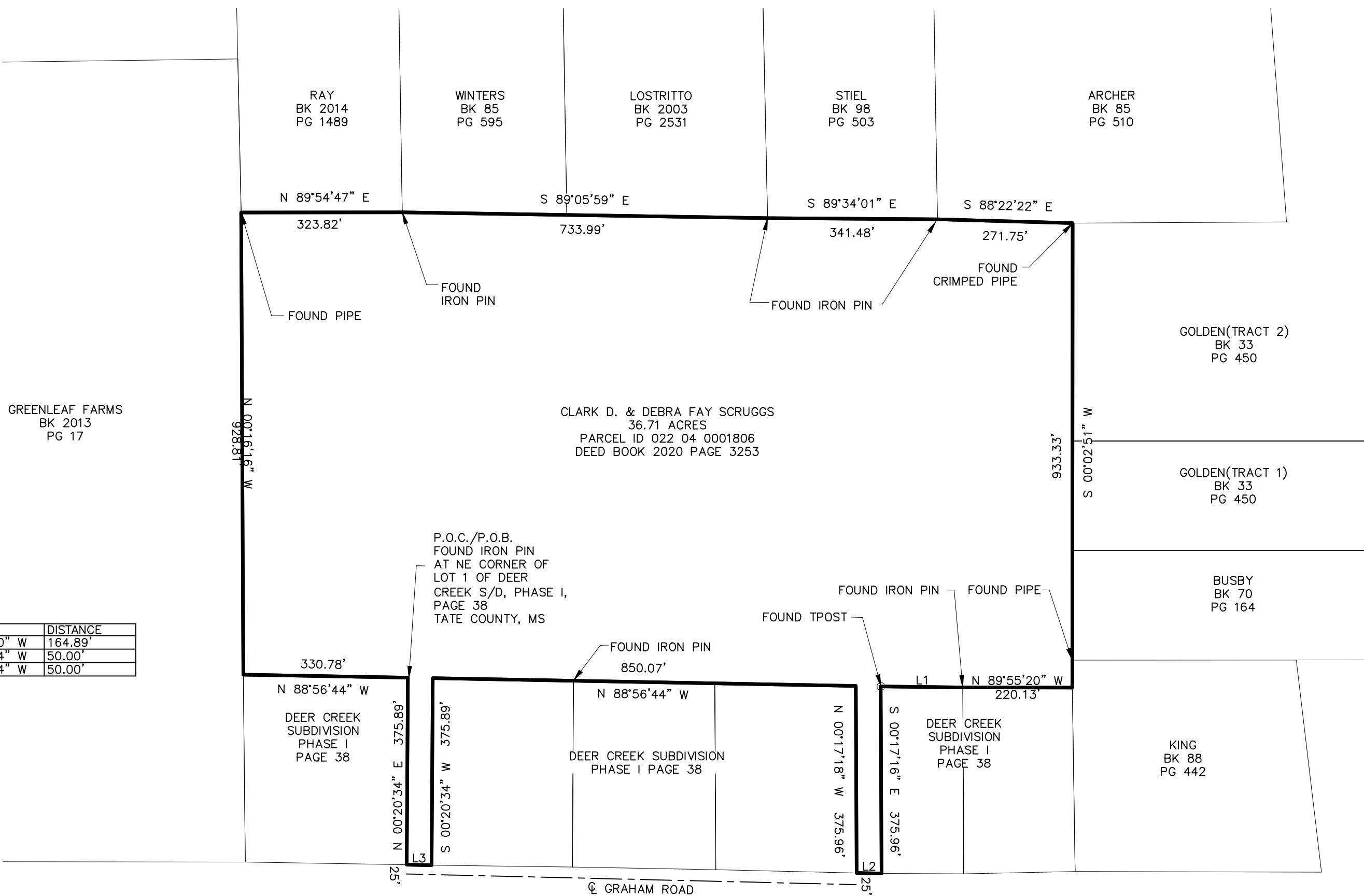


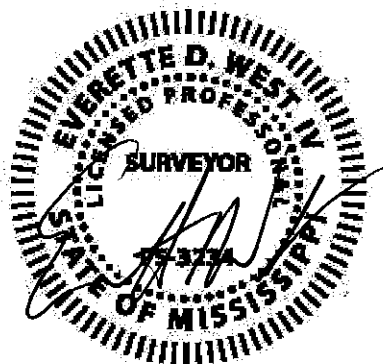
GRID BEARINGS SHOWN ON THIS PLAT.
SURVEY PERFORMED BY CONVENTIONAL
METHODS. GPS CONTROL SET USING GCGC
RTK NETWORK. AZIMUTH ORIENTATION IS
FROM ZERO GRID NORTH.



LINE	BEARING	DISTANCE
L1	N 89°18'20" W	164.89'
L2	N 88°56'44" W	50.00'
L3	N 88°56'44" W	50.00'



THIS IS TO CERTIFY THAT THIS PLAT WAS
DRAWN FROM A GROUND SURVEY MADE BY
ME OR UNDER MY DIRECT SUPERVISION
OF THE PHYSICAL FEATURES FOUND AND
IS TRUE AND ACCURATE TO THE BEST
OF MY KNOWLEDGE AND BELIEF.



EVERETTE WEST, MS PLS #3234
WEST SURVEYING, LLC
35 CONNER AVE.
HOLLY SPRINGS, MISSISSIPPI
(901) 485-7616
westsurveying@gmail.com

NOTES:

- BEARINGS REFERENCED BY GPS AND BASED ON MISSISSIPPI STATE PLANE COORDINATE SYSTEM, WEST ZONE, NAD 83, US FOOT. AZIMUTH ORIENTATION IS FROM ZERO GRID NORTH. CONVERGENCE ANGLE 00°16'58.66". SCALE FACTOR = 0.99997544
- DISTANCES AND COORDINATES SHOWN ARE GRID VALUES, US SURVEY FEET, MISSISSIPPI STATE PLANE COORDINATES, WEST ZONE, NAD 83 DATUM.
- FIELD SURVEY COMPLETED: AUGUST 2022.
- THIS IS A CLASS "B" SURVEY.
- 1/2" REBAR SET AT ALL CORNERS UNLESS NOTED.

LEGAL DESCRIPTION:

BEING A TRACT OF LAND LOCATED IN THE SOUTHEAST 1/4 OF SECTION 4, TOWNSHIP 4 SOUTH, RANGE 6 WEST, TATE COUNTY, MISSISSIPPI AND BEING MORE PARTICULARLY DESCRIBED AS FOLLOWS:

COMMENCING AT A FOUND IRON PIN AT THE NORTHEAST CORNER OF LOT 1 OF PHASE 1 OF DEER CREEK SUBDIVISION AS RECORDED IN PLAT BOOK 13 PAGE 38, SAID POINT BEING THE POINT OF BEGINNING; THENCE ALONG THE NORTH LINE OF SAID DEER CREEK SUBDIVISION, NORTH 88 DEGREES 56 MINUTES 44 SECONDS WEST A DISTANCE OF 330.78' TO A SET 1/2" REBAR; THENCE ALONG THE EAST LINE OF THE GREENLEAF FARMS PROPERTY (BK2013/PG17) NORTH 00 DEGREES 16 MINUTES 16 SECONDS WEST A DISTANCE OF 928.81' TO A FOUND IRON PIPE; THENCE ALONG THE SOUTH LINE OF THE RAY PROPERTY (BK2014/PG1489) NORTH 89 DEGREES 54 MINUTES 47 SECONDS EAST A DISTANCE OF 323.82' TO A FOUND IRON PIN; THENCE ALONG THE SOUTH LINE OF THE WINTERS PROPERTY (BK85/PG595) AND THE LOSTRITTO PROPERTY (BK2003/PG2531) SOUTH 89 DEGREES 05 MINUTES 59 SECONDS EAST A DISTANCE OF 733.99' TO A FOUND IRON PIN; THENCE ALONG THE SOUTH LINE OF THE STIEL PROPERTY (BK98/PG503) SOUTH 89 DEGREES 34 MINUTES 01 SECONDS EAST A DISTANCE OF 341.48' TO A FOUND IRON PIN; THENCE ALONG THE SOUTH LINE OF THE ARCHER PROPERTY (BK85/PG510) SOUTH 88 DEGREES 22 MINUTES 22 SECONDS EAST A DISTANCE OF 271.75' TO A FOUND CRIMP PIPE; THENCE ALONG THE WEST LINE OF THE GOLDEN (BK33/PG450), BUSBY (BK70/PG164), AND KING (BK88/PG442) PROPERTIES SOUTH 00 DEGREES 02 MINUTES 51 SECONDS WEST PASSING A FOUND PIPE AT 877.95' AND CONTINUING FOR A TOTAL DISTANCE OF 933.33' TO A SET 1/2" REBAR; THENCE ALONG SAID PHASE 1 OF DEER CREEK SUBDIVISION FOR THE FOLLOWING CALLS:
NORTH 89 DEGREES 55 MINUTES 20 SECONDS WEST A DISTANCE OF 220.13' TO A FOUND IRON PIN;
NORTH 89 DEGREES 18 MINUTES 20 SECONDS WEST A DISTANCE OF 164.89' TO A FOUND TPOST;
SOUTH 00 DEGREES 17 MINUTES 16 SECONDS EAST A DISTANCE OF 375.96' TO A SET 1/2" REBAR ON THE NORTH LINE OF GRAHAM ROAD (25' FROM CENTERLINE); THENCE ALONG THE NORTH LINE OF GRAHAM ROAD, NORTH 88 DEGREES 56 MINUTES 44 SECONDS WEST A DISTANCE OF 50.00' TO A SET 1/2" REBAR; THENCE ALONG SAID PHASE 1 OF DEER CREEK SUBDIVISION FOR THE FOLLOWING CALLS:
NORTH 00 DEGREES 17 MINUTES 18 SECONDS WEST A DISTANCE OF 375.96' TO A SET 1/2" REBAR;
NORTH 88 DEGREES 56 MINUTES 44 SECONDS WEST A DISTANCE OF 850.07' TO A SET 1/2" REBAR;
SOUTH 00 DEGREES 20 MINUTES 34 SECONDS WEST A DISTANCE OF 375.89' TO A SET 1/2" REBAR ON THE NORTH LINE OF GRAHAM ROAD (25' FROM CENTERLINE); THENCE ALONG THE NORTH LINE OF GRAHAM ROAD, NORTH 88 DEGREES 56 MINUTES 44 SECONDS WEST A DISTANCE OF 50.00' TO SET 1/2" REBAR; THENCE ALONG SAID PHASE 1 OF DEER CREEK SUBDIVISION NORTH 00 DEGREES 20 MINUTES 34 SECONDS EAST A DISTANCE OF 375.89' TO THE POINT OF BEGINNING AND CONTAINING 36.71 ACRES MORE OR LESS AND ACCORDING TO A SURVEY PREPARED BY EVERETTE D. WEST, MS PLS NO. 3234 DATED AUGUST 29, 2022.

ALL BEARINGS ARE GRID BEARINGS.

SAID PROPERTY IS SUBJECT TO ALL RIGHT OF WAY, EASEMENTS AND RESTRICTIONS OF RECORD.

WEST SURVEYING, LLC.

35 Conner Avenue (901) 485-7616
Holly Springs, MS 38635 westsurveying@gmail.com

BOUNDARY SURVEY
FOR
BART SCRUGGS
IN THE S.E. 1/4 OF SECTION 4,
TOWNSHIP 4 SOUTH, RANGE 6 WEST,
TATE COUNTY, MISSISSIPPI

REVISIONS	SURVEY: EW	SHEET NO.
	DRWN: EW	
	CHKD:	
	DATE: SEPT. 2, 2022	