

# Short Ranch

---

1,115.08± acres | \$2,062,098 | Raton, New Mexico | Colfax County



*Chas. S. Middleton*

---

AND SON LLC

FARM - RANCH SALES AND APPRAISALS

*Est. 1920*

# Short Ranch

---

We are excited to announce another quality ranch property for sale in Northeastern New Mexico. The Short Ranch is well located on Johnson Mesa, approximately 25 highway miles east of Raton, New Mexico. Access to the property is provided by a paved highway. Johnson Mesa is widely known as one of the most productive ranching areas of the state and additionally offers panoramic 360° scenic views with the added benefit of wildlife/hunting. The Short Ranch has been owned by the same family for 100+ years, and this is the first time the ranch has been offered for sale during this family's long-term ownership.

## Property Description

---

Johnson Mesa is a well-defined, prominent mesa plateau located east of Raton, New Mexico, and just west of the small community of Folsom, New Mexico. This elevated mesa plateau extends in a westerly to an easterly direction for approximately 25 miles and is generally 4-6 miles wide from north to south. Elevations on the open plains country at the foot of Johnson Mesa generally range from 6,500 – 7,000 feet. Elevations on top of Johnson Mesa range from 8,000 – 8,700 feet. This dramatic increase in elevation on the mesa provides a top-of-the-world view of the surrounding countryside, overlooking the lower plains country below. From the mesa edge on the Short Ranch, one can view Capulin Peak and Sierra Grande in the far distance. Johnson Mesa is characterized as a lava-topped tableland created from past volcanic eruptions. Several volcanic cones, such as Red Mountain, Towndrow Peak, and Dale Mountain rise approximately 400 feet above the surrounding mesa upland areas.

Elevations over much of the Short Ranch range from 8,000 – 8,150 feet. On the far western boundary edge of the property, a significant, very deep and rugged canyon, with sheer fractured rock provides stunning views of a small part of gorgeous Northeastern New Mexico. A small portion of the west side of the ranch has oak motts, mountain mahogany, and locust trees on its rocky hillside.

---















## Terrain

---

Soils are deep and fertile on the level portions of the property and become very rocky on the side slopes and hilly areas. Rock outcroppings are generally described as volcanic malpai/lava rocks, which give the soil and grass tremendous strength and fertility. The ranch has a lush cover of high elevation grasses, being grama, fescue, western wheatgrass, and bluestem. Native grass vegetation on Johnson Mesa is widely recognized as some of the best the state has to offer, and summer gains often exceed 300 pounds for the season (middle of May through October 1st – 15th) for yearling cattle.

---















## Water Features

---

The Short Ranch is well watered with pockets of natural water and earthen ponds. An electric submersible well is located at the old ranch headquarters that provides water to livestock drinkers and there is a windmill well located about mid-way into the ranch.

---















## Wildlife • Hunting

---

While much of the Short Ranch has an open appearance, pockets of brush and scattered trees offer favorable habitats for antelope, an occasional elk and bear. In the early mornings and late afternoons, it is very common for wildlife to leave the protected canyon cover in order to graze on the productive Johnson Mesa pasture lands.

Historically, the family has grazed 125 pairs on the ranch, but hunting opportunities do exist on the property. A small ranch camp is located near the entrance of the property and is used by family members and hunters from time to time.

---













## Climate

---

Because of the high altitude, summers have very pleasurable moderate temperatures, and winters can be harsh. At times, the highway extending through Johnson Mesa will be closed during the winter months because of excessive snow. However, this snow jump-starts the countryside as temperatures warm in the summer, and native grass vegetation normally excels during the growing season, offering tremendous grazing opportunities from May to October. Typically, Johnson Mesa receives 19 – 20 inches of moisture during the year.

## Price • Minerals • Taxes

---

The Short Ranch is offered for sale at \$1,850 per acre. One-half of the seller's mineral interest will convey with the property. Property taxes are extremely reasonable, being approximately \$293 in 2021.

## Remarks

---

The Short Ranch is in an area (Johnson Mesa) where ranch properties are typically passed down from generation to generation, and a property such as the Short is seldom offered for sale. We view this offering as a rare opportunity to purchase some of the most productive ranch country in Northeastern New Mexico.

*Call Jim Welles (505) 967.6562 or Dwain Nunez (505) 263.7868  
today for more information or to schedule a tour.*







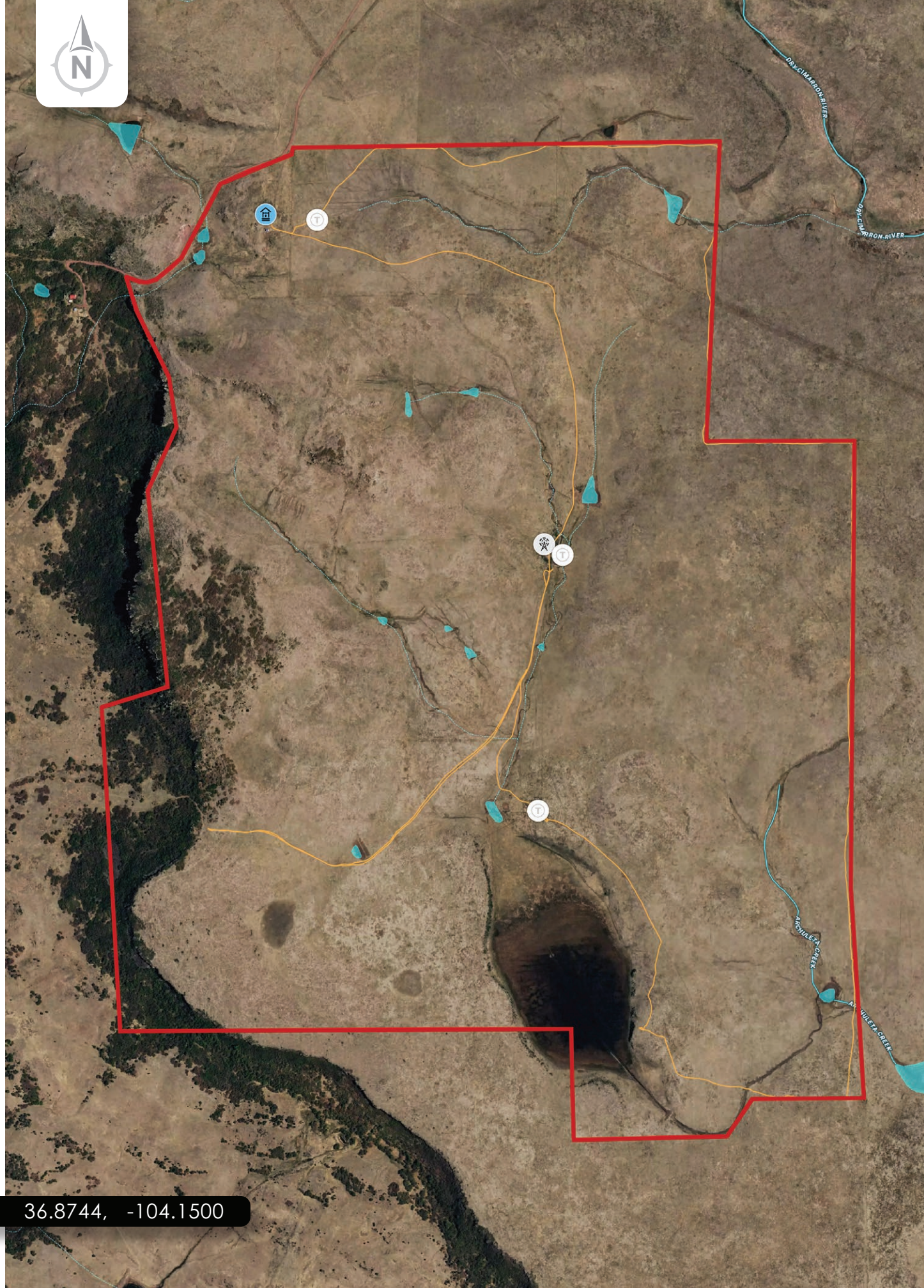




# COLORADO NEW MEXICO

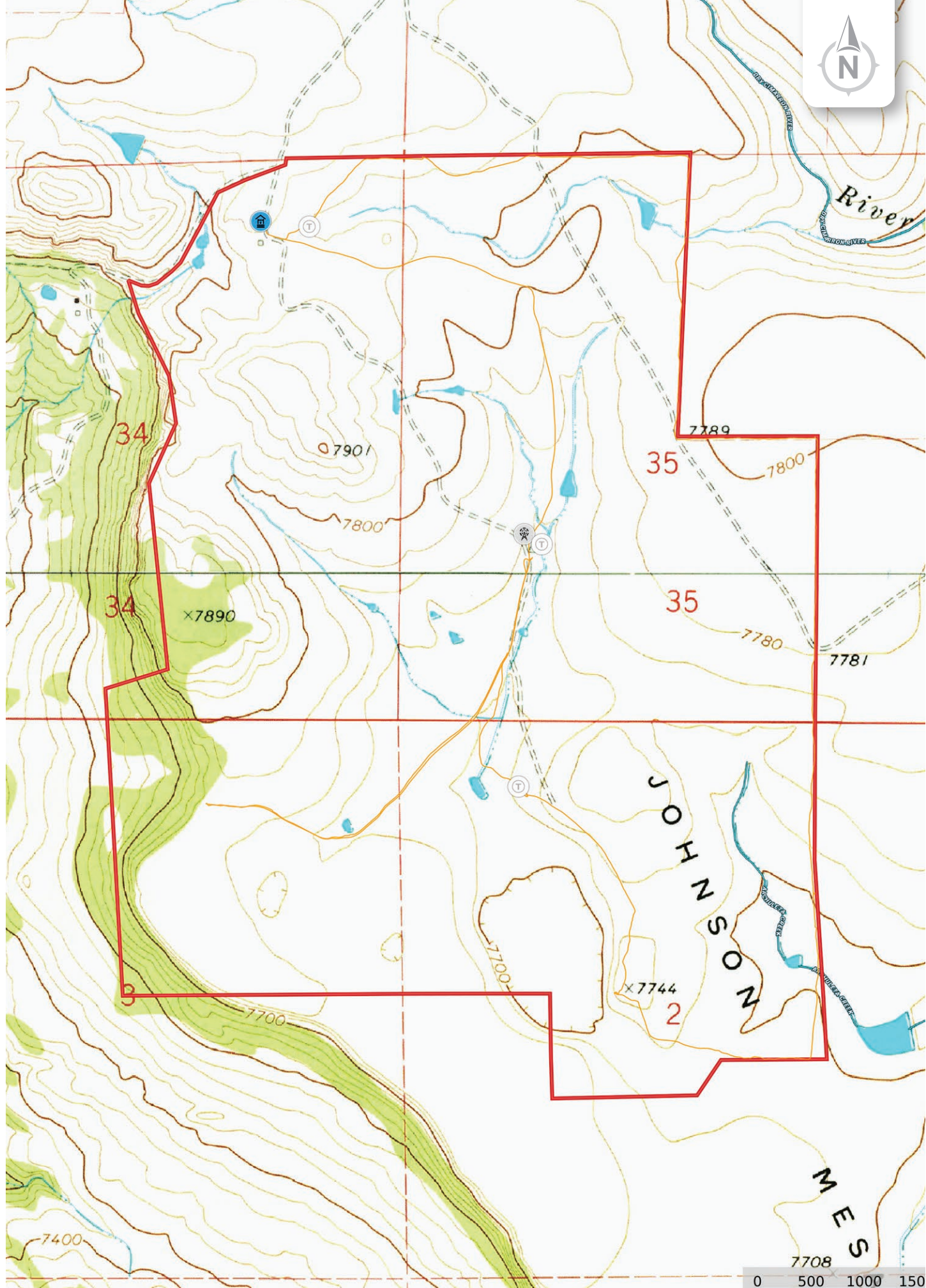






36.8744, -104.1500







*Chas. S. Middleton*

— AND SON LLC —

FARM - RANCH SALES AND APPRAISALS

*Est. 1920*

James (Jim) Welles

Real Estate Associate Broker • NM

(505) 967.6562

[jim@csmansion.com](mailto:jim@csmansion.com)

Dwain Nunez

Real Estate Associate Broker • NM

(505) 263.7868

[dwain@csmansion.com](mailto:dwain@csmansion.com)



Scan QR Code for more details on the Short Ranch.

(806) 763.5331

[chasmiddleton.com](http://chasmiddleton.com)



YouTube

