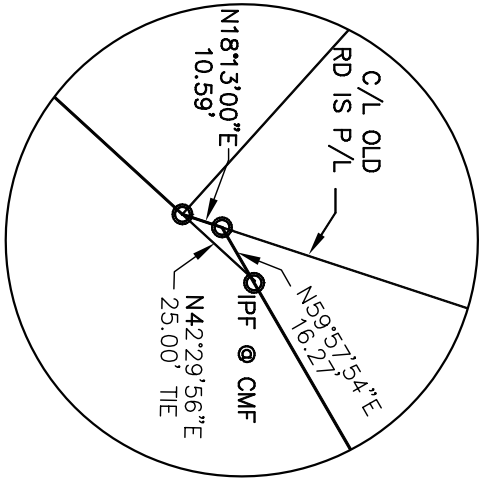


- 1) Equipment used angular and linear: Trimble 5600R EDM, Trimble 4000 series GPS receivers.
- 2) The field data on which this plat is based has a closure precision of one foot in 288,577 feet or better and an angular error of N/A per angle point and was un-adjusted.
- 3) The plat has been calculated for closure and is found to be accurate within one foot in 231,920 feet or better.
- 4) All underground utility lines shown hereon are approximate.
- 5) No portion of subject property is located in a special flood hazard area as per F.I.R.M. Community Panel No. 130458 0115B dated 4/2/91.
- 6) This plat is subject to any easements, reservations or restrictions that may exist either written or unwritten.
- 7) Coordinates shown are Grid Coordinates GA West Zone, NAD 83, US Survey Feet. Distances are surface distances.
- 8) Reference Plat Book 1 pg 123 and Plat Book 8 pg 53 for further information.
- 9) Creek centerline taken from aerial survey by Jack Berry & Assoc. for Construction Engineering Services, date of photography Jan. 10, 2001.
- 10) No title binder provided by client.



DETAIL "A"

