

702 Shannon Road

Cotopaxi, Colorado 81223



PROPERTY AT A GLANCE

1.20 Acres
Golden Acres Subdivision
1,890 SF Home, Built in 1999
4 Beds, 2 Bath
Primary Suite w/ 5 Piece Bathroom
Forced Air Heat
Private Well & Septic System
2 Vehicle Detached Carport
No HOA Dues
2021 Taxes \$605



Arkansas River access in this subdivision.

Acreage plus a 4 bedroom plus office, 2 full bath manufactured home with a private fenced backyard for your animals and a barn/storage building for your toys. The home has newer updates and flooring. There is off street parking and a 2 car carport. Beautiful mountain range views from your living room and absolutely beautiful views in all directions. Fishing and river access on the river a stroll away within the subdivision that is gently sloped. Public land for hiking is nearby. Nature, views and affordability with this lovely home.

Located about 30 minutes drive from Salida, Canon City and Westcliffe.

Bighorn sheep and other wildlife can be viewed in this area.

By appointment.

LISTING AGENT

Barbara Pearson-Sawyer
Broker Associate
CRS, GRI, ABR, SRS, SRES
719-207-3884 Cell



First
COLORADO LAND
Office



Barbara@Pearson-Sawyer.com

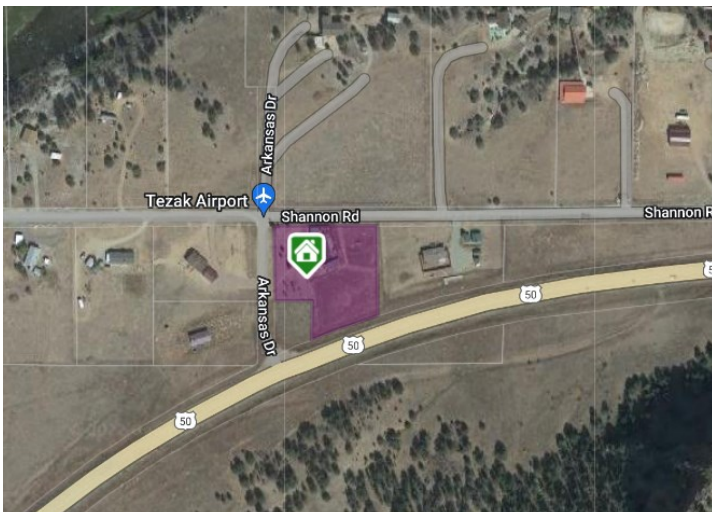


FirstColorado.com – 719-539-6682 – 7385 W. Hwy 50 / PO Box 749 Salida, CO 81201

ALL DATA, MEASUREMENTS, SQUARE FOOTAGE, ETC. DEEMED RELIABLE. NO WARRANTIES OR REPRESENTATIONS EXPRESSED OR IMPLIED.



Directions: Hwy 50 east from Salida, past the Cotopaxi Store just before Texas Creek, property on north side of hwy. Golden Acres Sub-division. It is located halfway between Salida and Canon City.



FirstColorado.com – 719-539-6682 – 7385 W. Hwy 50 / PO Box 749 Salida, CO 81201

ALL DATA, MEASUREMENTS, SQUARE FOOTAGE, ETC. DEEMED RELIABLE. NO WARRANTIES OR REPRESENTATIONS EXPRESSED OR IMPLIED.