

# Evertson Well Service Office/Shop

KIMBALL COUNTY, NEBRASKA

New Listing

12.65±  
Total Acres

Established  
Commercial  
Property

Total Offering  
\$960,000



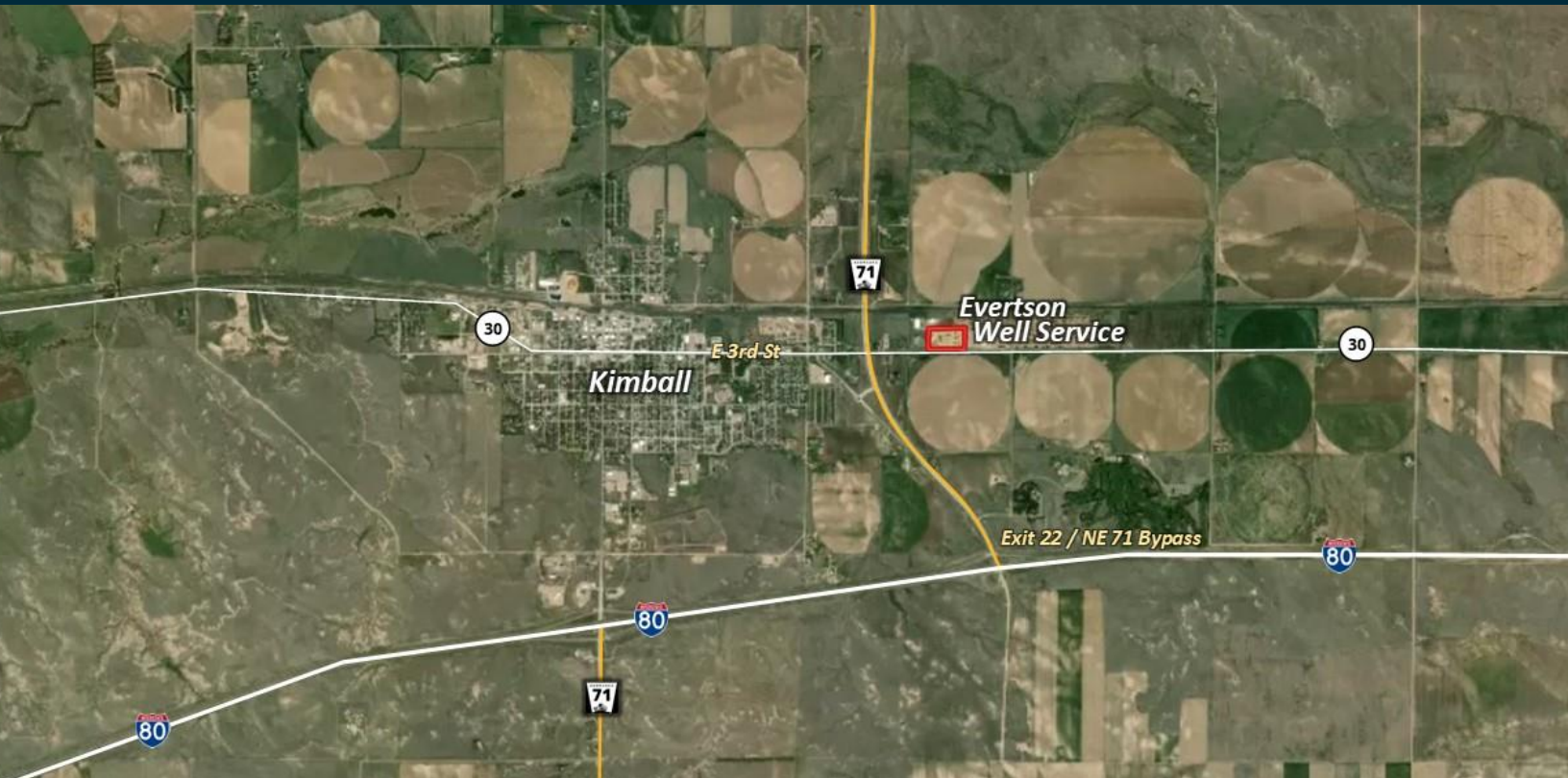
Office: 970.522.7770 | Toll Free: 800.748.2589

**For More Information, Contact:**

**Marc Reck**, Broker  
marcreck@reckagri.com

**Ben Gardiner**, Salesperson  
bgardiner@reckagri.com

# Maps + Directions



AERIAL LOT



## Directions:

**4362 E Hwy 30, Kimball, NE 69145** // I - 80 to Exit 22 (Gering - Scottsbluff bypass) 1 mile north, 1 mile east.  
From downtown Kimball, 1.5 miles east along Highway 30



# Photographs + Parcel Description



## Description:

**4362 E Highway 30, Kimball, NE 69145**

12.65± total acres | 2 lots | offices | shop

Excellent commercial opportunity 1.5 miles east of downtown Kimball, NE, along Highway 30 and 1 mile north of Interstate 80/Hwy #71 (Exit 22 - Gering/Scottsbluff bypass). Property has been the offices, maintenance/repair shop, and oil field equipment storage facility for Everettson Well Services, Inc. 2,400± sq ft office space with reception area, executive office, 4 additional offices, conference room with wet bar area, employee break room, work room and bathrooms. Gas-fired forced air heat with central air. Office equipment included. The shop is 9,800± square feet (70' by 140' w/ 26' sidewalls), reinforced cement floors for heavy oil field equipment, overhead radiant heat, 5-ton overhead hoist, 3 large overhead doors, 1 smaller overhead door, central drain and grease trap, mezzanine storage area, insulated, and shop bathroom. Property is within Kimball City limits, serviced by city water and sewer and zoned I-2 Heavy Industrial. Real Estate Taxes: \$4,633.24

**TOTAL ASKING PRICE: \$960,000**



PO Box 407, Sterling, CO 80751  
ADDRESS SERVICE REQUESTED

PRSRT FIRST CLASS  
U.S. POSTAGE  
**PAID**  
MAIL U.S.A.

## Reck Means Results

We connect buyers and sellers of ag real estate like no one else can - and we have the reputation and relationships to prove it.

We are also known for getting the job done right. No matter what the situation, you can count on Reck Agri Realty & Auction to bring unmatched attention to detail, extensive market knowledge and a comprehensive strategy to every transaction.



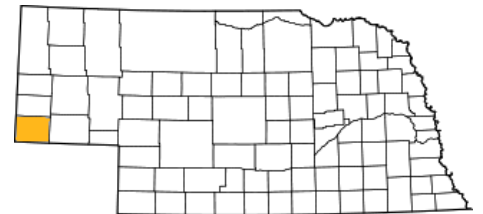
## Evertson Well Service Office/Shop

12.65± total acres

New Listing



KIMBALL COUNTY, NE



Evertson Well Service office, repair/maintenance shop, and storage lot - 12.65± acres - 1.5± mi east of downtown Kimball, NE and 1 mile North of I-80. Within Kimball City limits - Zoned I - 2 Heavy Industrial - City Water & Sewer. Excellent commercial opportunity.

 **RECK AGRI**  
REALTY & AUCTION