



Shawn Gillispie, Broker PH:  
806-922-5532  
6107 S Coulter STE #300  
AMARILLO, TEXAS 79119

# FOR SALE

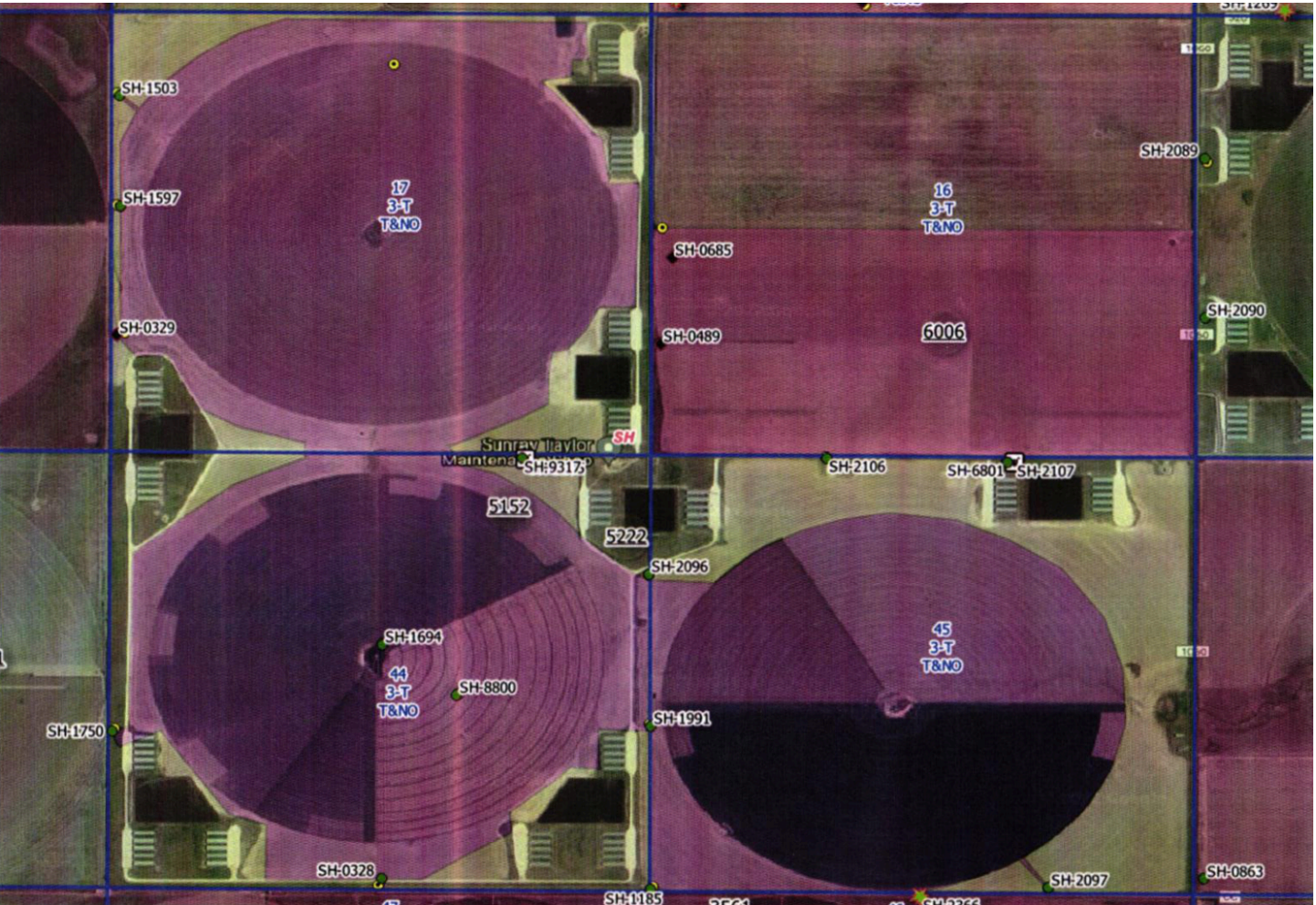
**FM 1060 Irrigated Farm**  
**1,090 Acres**

**\$4,578,000**  
**\$4,200/acre**



**3D interactive Map**





## FM 1060 Irrigated Farm 1,090

<b>Area:</b>	NE of Sunray, TX in Sherman County
<b>Location:</b>	From Sunray, TX drive east on FM 281 for 9 miles, turn left on FM 1060 and drive north 6 miles to the SE corner of property.
<b>Total Acres:</b>	Approximately 1,090 acres; 3 sprinklers on 3 sections with no dryland
<b>Total Wet Acres:</b>	Approximately 1,090 acres (No dryland corners included in sale)
<b>% Irrigated to total acres:</b>	100%
<b>Crop History:</b>	Seed maze, corn, cotton, wheat
<b>Total Irrigation Wells:</b>	8 wells
<b>Total GPM:</b>	<b>Approximately 2,550 gpm</b>
<b>GPM/ Wet Acre:</b>	<b>2.34 gpm/ wet acre</b>

**Improvements:**

North Sprinkler	371.63 acre Zimmatic sprinkler nozzled for 1,550 gpm
South Sprinkler	353.52 acre 2021 Reinke 2021 Sprinkler nozzled for 1,550 gpm
	(The 2 sprinklers run one at a time)
Southeast Sprinkler	364.14 acre 1994 Zimmatic sprinkler nozzled for 1,000 gpm
	8- Irrigation wells
	1- CAT 3406 Irrigation Engines with turbine pumps and gearheads
	5- Electric motors with hollow shaft turbine pumps and VFD panels
	2- 60 HP motors; 2- 125 HP motors, 1- 100 HP motors
	2- Electric submersible pumps
	3- Booster pumps; 2 with 50 HP electric motors, 1 with 454 Chevy

Irrigation Wells:	Well #	Date Drilled	Depth
	SH- 8800	03/ 2015	502'
	SH- 2097	12/ 2001	485'
	SH- 1991	03/ 1998	519'
	SH- 1750	06/ 1988	480'
	SH- 1694	02/ 1981	500'
	SH- 1597	10/ 1976	476'
	SH- 1503	12/ 1974	499'
	SH- 1186	11/ 1968	600'