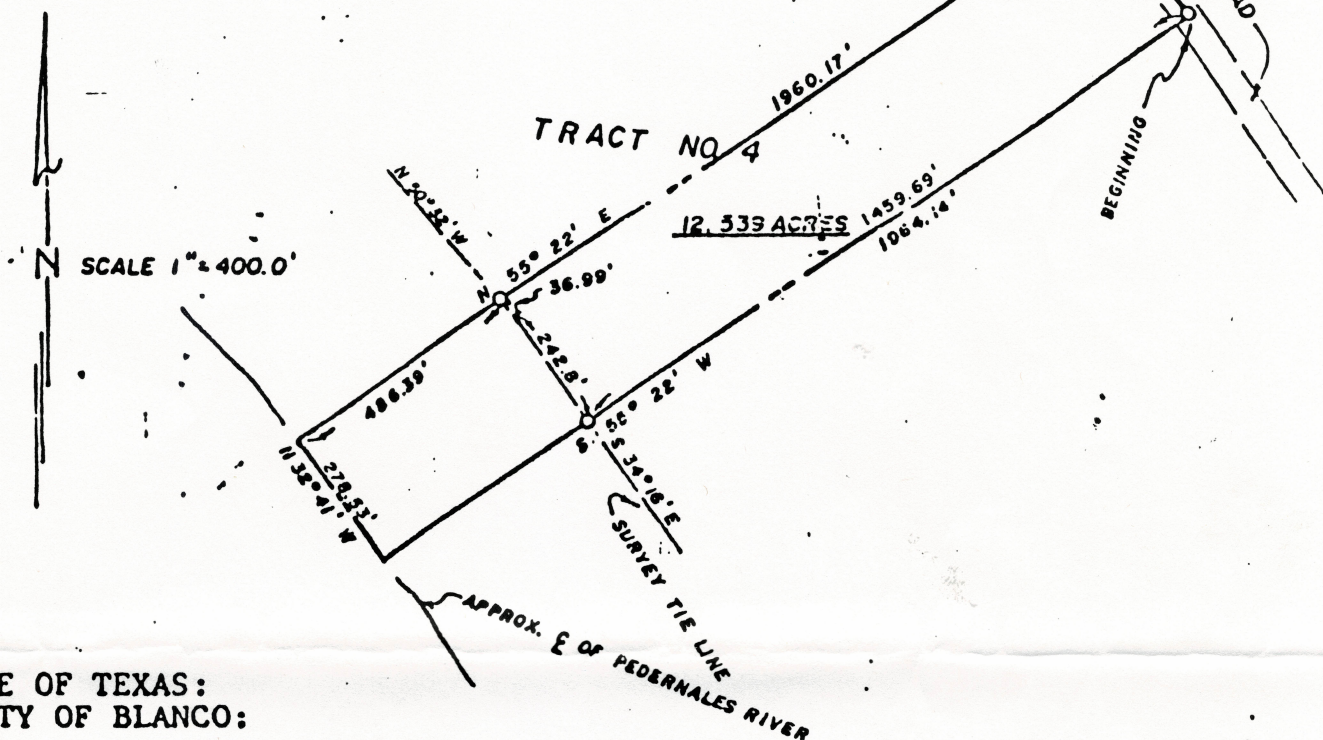


Willis & Associates Engineers  
908 2nd St.  
Marble Falls, Texas 78654



STATE OF TEXAS:  
COUNTY OF BLANCO:

Field notes of a 12.539 acre tract of land out of the William Ringo Survey No. 30 and also being a portion of that certain Tract No. Four of Pedernales Ranch Estates, the plat of which is recorded in Plat Book 1, Pages 61 through 66 of the Blanco County Plat Records.

Beginning at a point in the centerline of a 50 ft. wide roadway easement for the East corner of Tract No. Four,

Thence with the South line of said Tract No. Four S 55° 22' 00" W at 25.0 ft., a steel stake in the Southwest line of said 50 ft. wide road easement at 1,459.69 ft., a steel stake on the top of a bluff and in all 1,964.14 ft. to a point in the approximate centerline of the Pedernales River; said point being the South corner of said Tract No. Four for the South corner hereof,

Thence with the approximate centerline of Pedernales River N 32° 41' 00" W 278.53 ft. to a point therein,

Thence N 55° 22' 00" E at 486.39 ft., a steel stake on the top of said bluff and at 1,935.17 ft., a steel stake in the Southwest line of said 50 ft. wide roadway and in all 1,960.17 ft. to a point in the centerline of said 50 ft. wide roadway,

Thence with the centerline of said 50 ft. wide roadway S 33° 30' 00" E 278.42 ft. to the place of beginning.



I hereby certify that the field notes hereon represent the results of an on the ground survey made under my direction and supervision and that all corners are as described