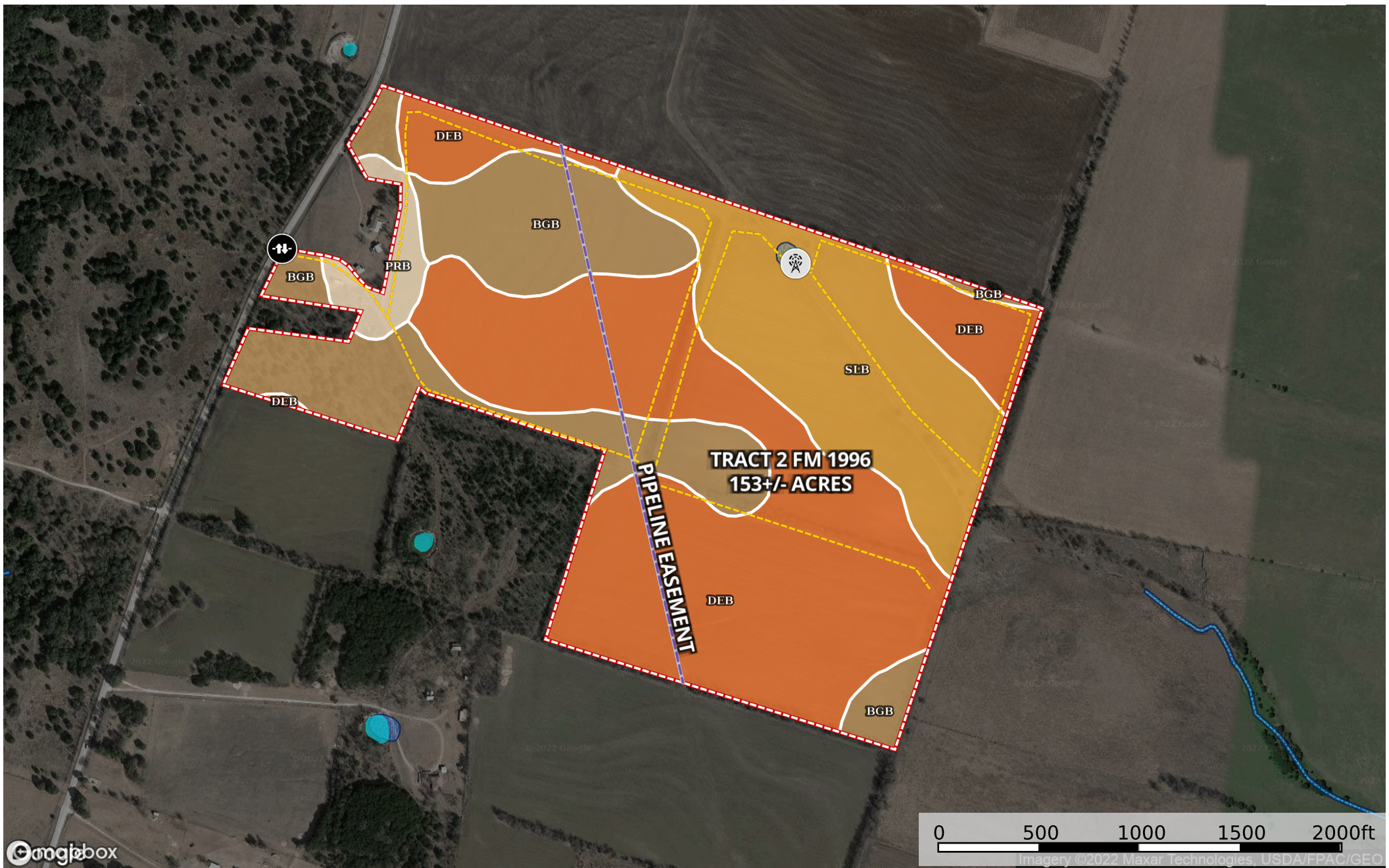


Morris - FM 1996 Tract 2 - 153 Acres
Coryell County, Texas, 153 AC +/-



- Old Windmill
- Gate
- Pipeline
- Road / Trail
- Boundary
- Wetlands
- Riparian
- Stream, Intermittent
- River/Creek
- Water Body



The information contained herein was obtained from sources deemed to be reliable. MapRight Services makes no warranties or guarantees as to the completeness or accuracy thereof.

Boundary 151.36 ac

SOIL CODE	SOIL DESCRIPTION	ACRES	%	CPI	NCCPI	CAP
DeB	Denton silty clay, 1 to 3 percent slopes	75.81	50.09	0	43	3e
BgB	Bolar gravelly clay loam, 1 to 4 percent slopes	38.45	25.4	0	36	3e
SIB	Slidell silty clay, 0 to 2 percent slopes	32.73	21.62	0	42	3e
PrB	Purves gravelly silty clay, 1 to 5 percent slopes	4.37	2.89	0	17	4s
TOTALS		151.36(*)	100%	-	40.25	3.03









(*) Total acres may differ in the second decimal compared to the sum of each acreage soil. This is due to a round error because we only show the acres of each soil with two decimal.

Capability Legend

Increased Limitations and Hazards

Decreased Adaptability and Freedom of Choice Users

Land, Capability

								
	1	2	3	4	5	6	7	8
'Wild Life'	•	•	•	•	•	•	•	•
Forestry	•	•	•	•	•	•	•	
Limited	•	•	•	•	•	•	•	
Moderate	•	•	•	•	•	•		
Intense	•	•	•	•	•			
Limited	•	•	•	•				
Moderate	•	•	•					
Intense	•	•						
Very Intense	•							

Grazing Cultivation

(c) climatic limitations (e) susceptibility to erosion

(s) soil limitations within the rooting zone (w) excess of water