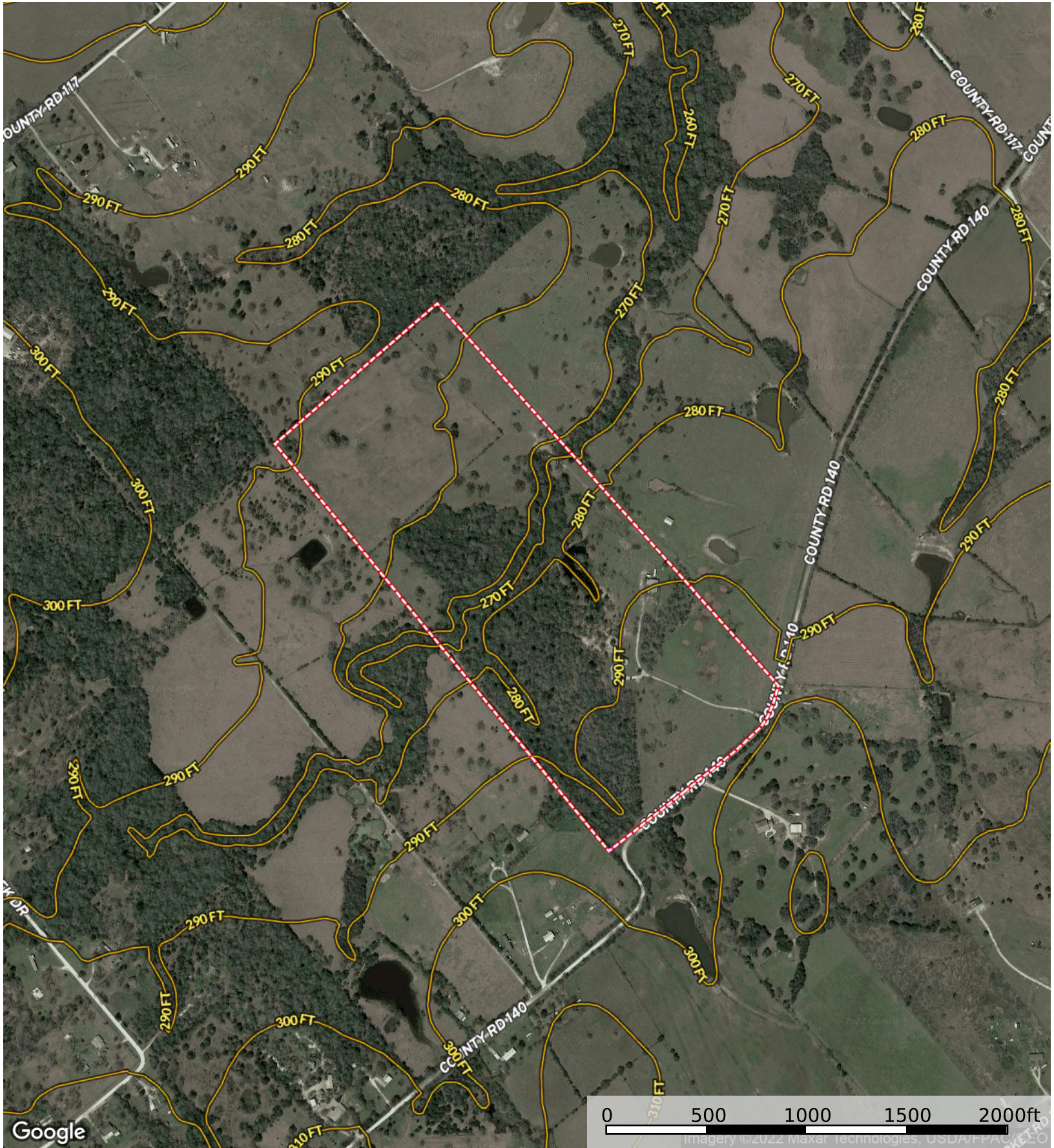




Google

40 . 5+/- Acres

23001 County Rd 140 - 68.5 Acres
Grimes County, Texas, 68.5 AC +/-



40 . 5+/- Acres



40 +/- Acres

100 Year Floodplain

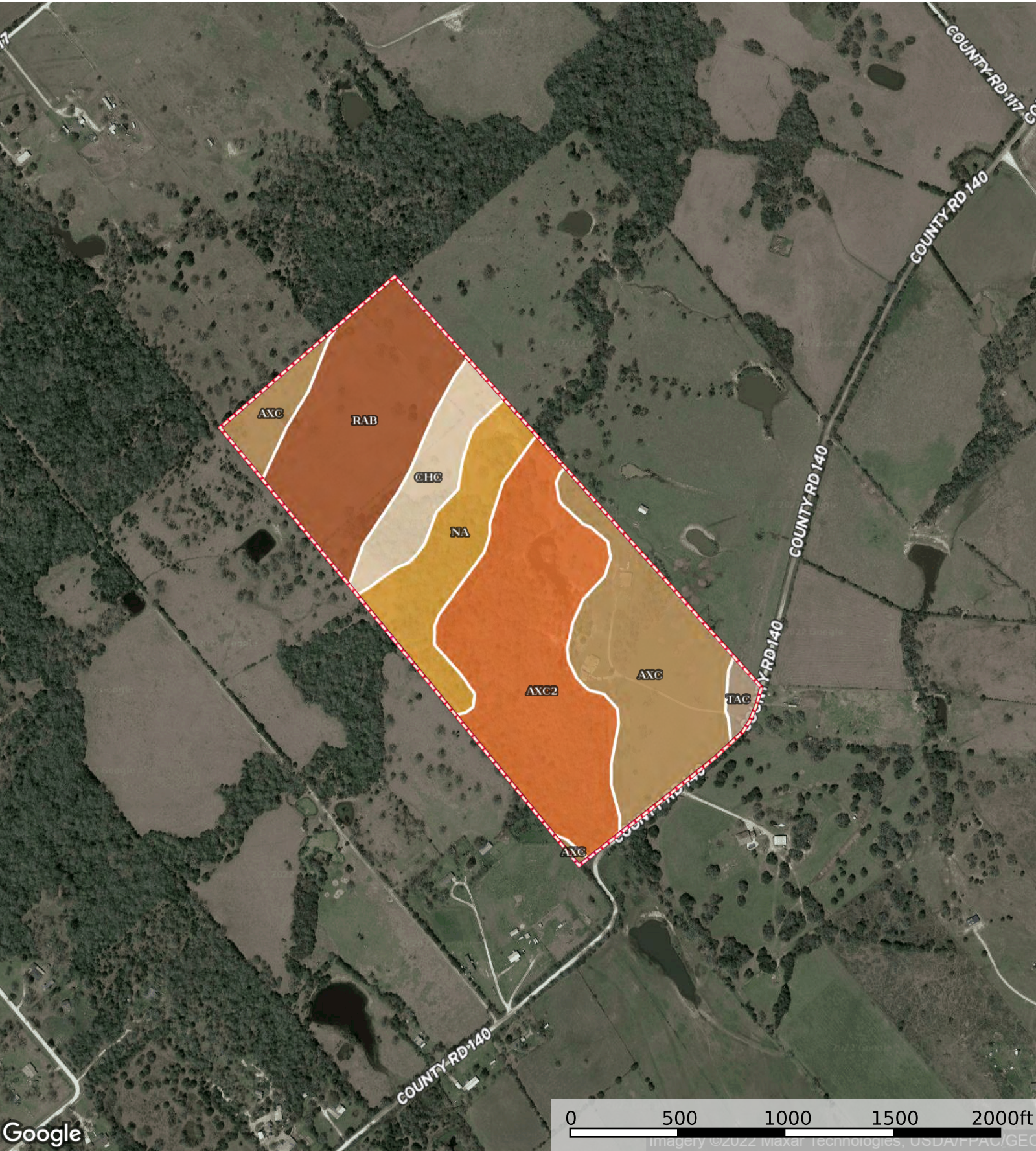
500 Year Floodplain

Floodway

Special

Unmapped/ Not Included

23001 County Rd 140 - 68.5 Acres
Grimes County, Texas, 68.5 AC +/-



40 . 5+/- Acres

| 40.5+/- Acres 68.47 ac

SOIL CODE	SOIL DESCRIPTION	ACRES	%	CPI	NCCPI	CAP
AxC2	Axtell fine sandy loam, 2 to 5 percent slopes, moderately eroded	21.28	31.08	0	51	4e
AxC	Axtell fine sandy loam, 1 to 5 percent slopes	17.39	25.4	0	55	4e
RaB	Rader fine sandy loam, 1 to 3 percent slopes	15.27	22.3	0	58	3s
Na	Nahatche clay loam, frequently flooded	8.2	11.98	0	40	5w
ChC	Chazos loamy fine sand, 1 to 5 percent slopes	5.43	7.93	0	55	3e
TaC	Tabor fine sandy loam, 1 to 5 percent slopes	0.9	1.31	0	39	4e
TOTALS		68.47(*)	100%	-	52.42	3.82

(*) Total acres may differ in the second decimal compared to the sum of each acreage soil. This is due to a round error because we only show the acres of each soil with two decimal.

Capability Legend

Increased Limitations and Hazards

Decreased Adaptability and Freedom of Choice Users

Land, Capability

	1	2	3	4	5	6	7	8
'Wild Life'	•	•	•	•	•	•	•	•
Forestry	•	•	•	•	•	•	•	
Limited	•	•	•	•	•	•	•	
Moderate	•	•	•	•	•	•		
Intense	•	•	•	•	•			
Limited	•	•	•	•				
Moderate	•	•	•					
Intense	•	•						
Very Intense	•							

Grazing Cultivation

(c) climatic limitations (e) susceptibility to erosion

(s) soil limitations within the rooting zone (w) excess of water