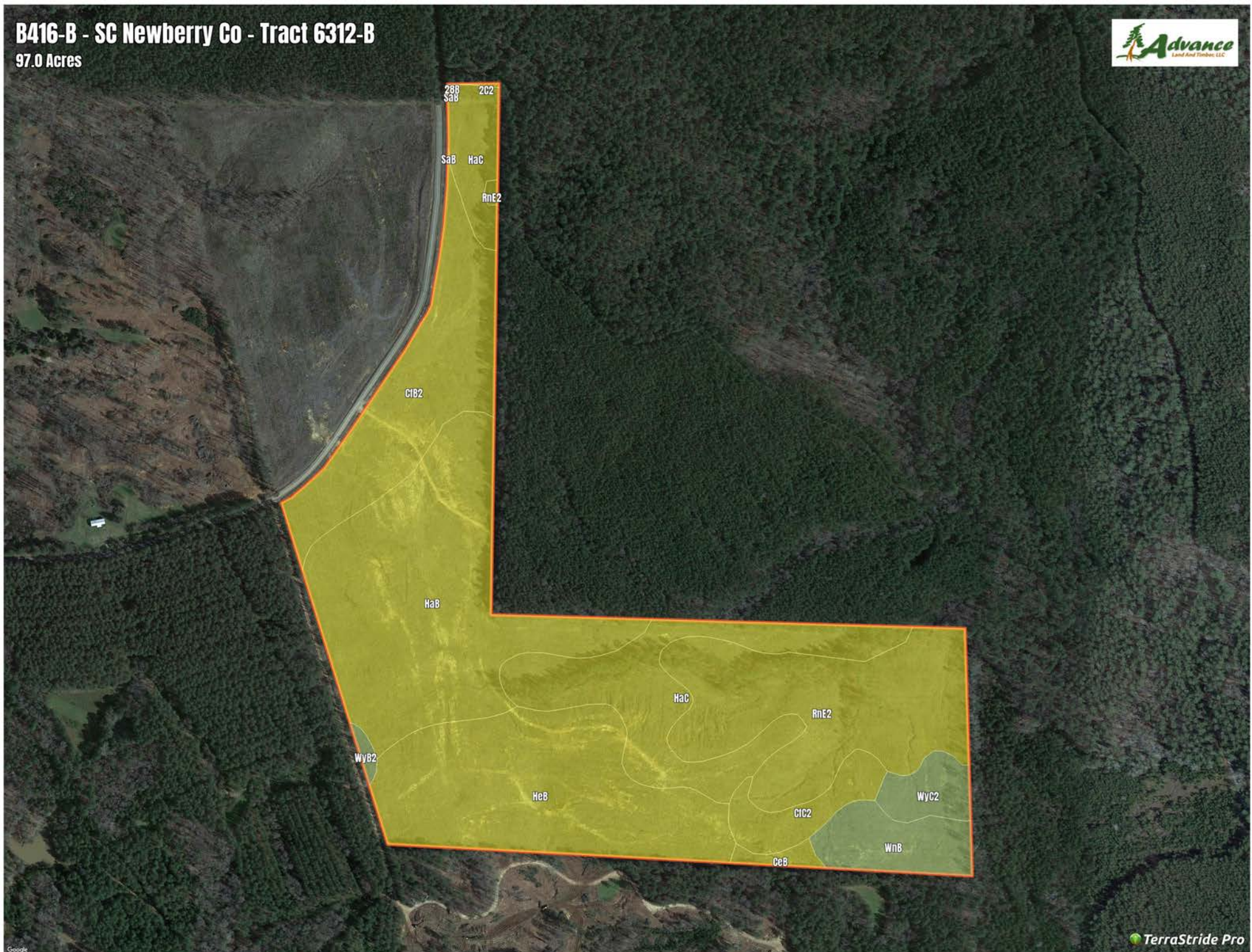


B416-B - SC Newberry Co - Tract 6312-B

97.0 Acres



B416-B - SC Newberry Co - Tract 6312-B

Soil Report

S ymbol	Ma p Unit De scription	Fa rmla nd cla s s	Are a (AC)	Ava ila ble Wa te r S tora ge (0-150cm - We ighte d Ave ra ge)	Flooding Fre que ncy (Ma ximum)	Dra ina ge Cla s s (Domina nt Condition)	Dra ina ge Cla s s (We tte s t Compone nt)	Hydric Cla s s ifica tion	Wa te r Ta ble De pth (Annua l Minimum)	Wa te r Ta ble De pth (April to June Minimum)	Be drock De pth (Minimum)	S oil Orde r
HaB	Hard Labor sandy loam, 2 to 6 percent slopes	All areas are prime farmland	0	18.3	None	Moderately well drained	Moderately well drained	0	114	0	0	Ultisols
HeB	Helena sandy loam, 2 to 6 percent slopes	All areas are prime farmland	0	19.4	None	Moderately well drained	Moderately well drained	0	58	0	0	Ultisols
RnE2	Rion sandy loam, 15 to 25 percent slopes, moderately eroded	Not prime farmland	0	21.3	None	Well drained	Well drained	0	0	0	0	Ultisols
HaC	Hard Labor sandy loam, 6 to 10 percent slopes	Farmland of statewide importance	0	18.3	None	Moderately well drained	Moderately well drained	0	114	0	0	Ultisols
CfB2	Cecil sandy clay loam, 2 to 6 percent slopes, moderately eroded	All areas are prime farmland	0	16.9	None	Well drained	Well drained	0	0	0	0	Ultisols
WnB	Winnsboro sandy loam, 2 to 6 percent slopes	Farmland of statewide importance	0	12.0	None	Well drained	Well drained	0	0	0	104	Alfisols
CfC2	Cecil sandy clay loam, 6 to 10 percent slopes, moderately eroded	Farmland of statewide importance	0	16.9	None	Well drained	Well drained	0	0	0	0	Ultisols
Wyc2	Wynott-Winnsboro complex, 6 to 10 percent slopes, moderately eroded	Not prime farmland	0	10.0	None	Well drained	Well drained	0	0	0	74	Alfisols
CeB	Cecil sandy loam, 2 to 6 percent slopes	All areas are prime farmland	0	17.6	None	Well drained	Well drained	0	0	0	0	Ultisols
WyB2	Wynott-Winnsboro complex, 2 to 6 percent slopes, moderately eroded	Farmland of statewide importance	0	10.0	None	Well drained	Well drained	0	0	0	74	Alfisols
SaB	Santuc loamy coarse sand, 2 to 6 percent slopes	All areas are prime farmland	0	22.3	None	Moderately well drained	Moderately well drained	0	66	0	0	Ultisols
2C2	Appling sandy clay loam, 7 to 15 percent slopes, moderately eroded	Not prime farmland	0	16.5	None	Well drained	Well drained	0	0	0	0	Ultisols
28B	Santuc loamy coarse sand, 2 to 7 percent slopes	All areas are prime farmland	0	22.3	None	Moderately well drained	Moderately well drained	0	66	0	0	Ultisols