

160 Acres of Dry Land

Southwest Quarter 5-23-36

Kearny County, Kansas



HUTCHESON
Real Estate & Auction Co., Inc.

Dairies*Feedyards*Land*Mineral Rights*Water Rights

Commercial*Industrial*Residential

(620) 355-7991

www.hutchreal.com

160 Acres of Dry Land

Southwest Quarter 5-23-36

Kearny County, Kansas

Description of Land

This tract consists of 160 acres of dry crop.

Legal Description

The Southwest Quarter (SW/4) of Section Five (5), Township Twenty-three (23) South, Range Thirty-six (36) West of the Sixth P.M., Kearny County, Kansas.

Possession

Buyer shall get immediate possession.

Minerals

This tract is selling with the surface rights only.

Real Estate Taxes

\$757.18

Asking Price

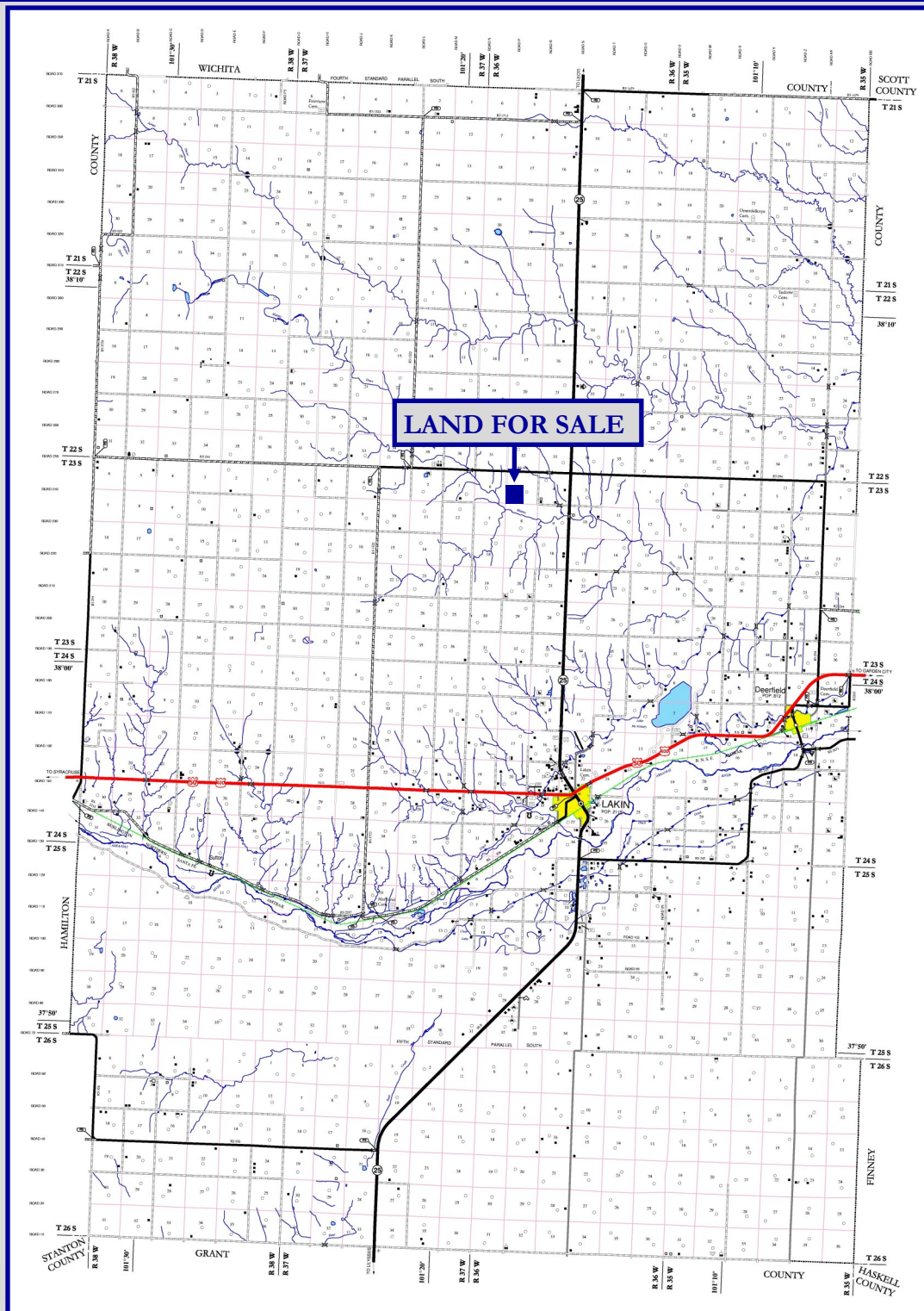
\$424,000 or \$2,650 Per Acre



160 Acres of Dry Land

Southwest Quarter 5-23-36

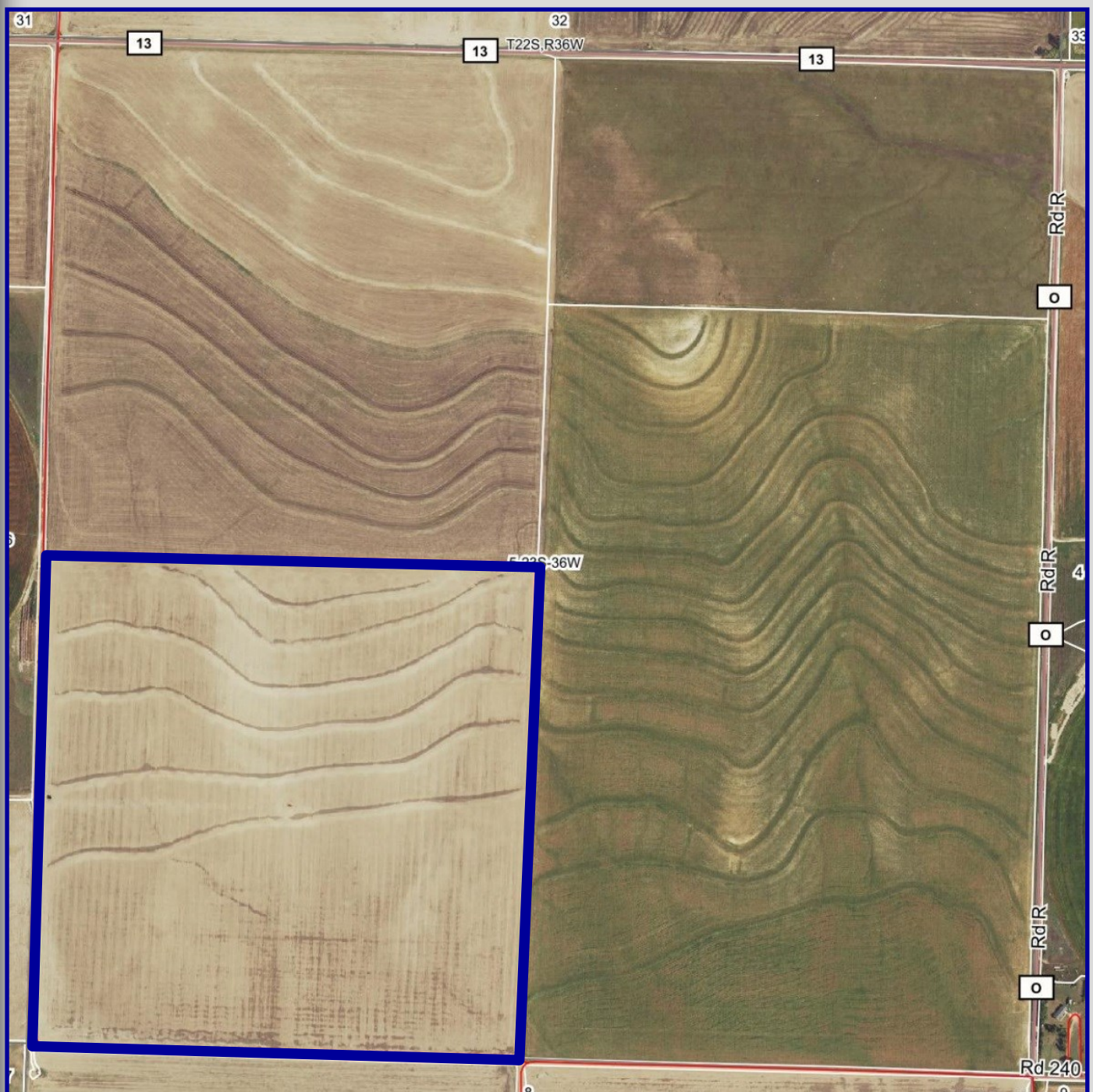
Kearny County, Kansas



160 Acres of Dry Land

Southwest Quarter 5-23-36

Kearny County, Kansas

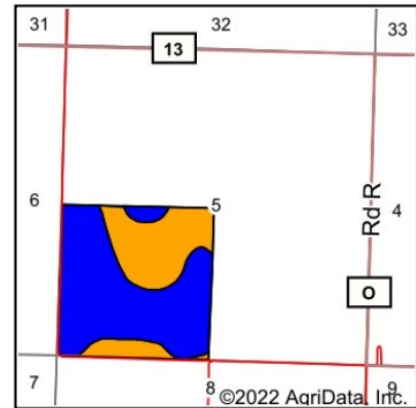
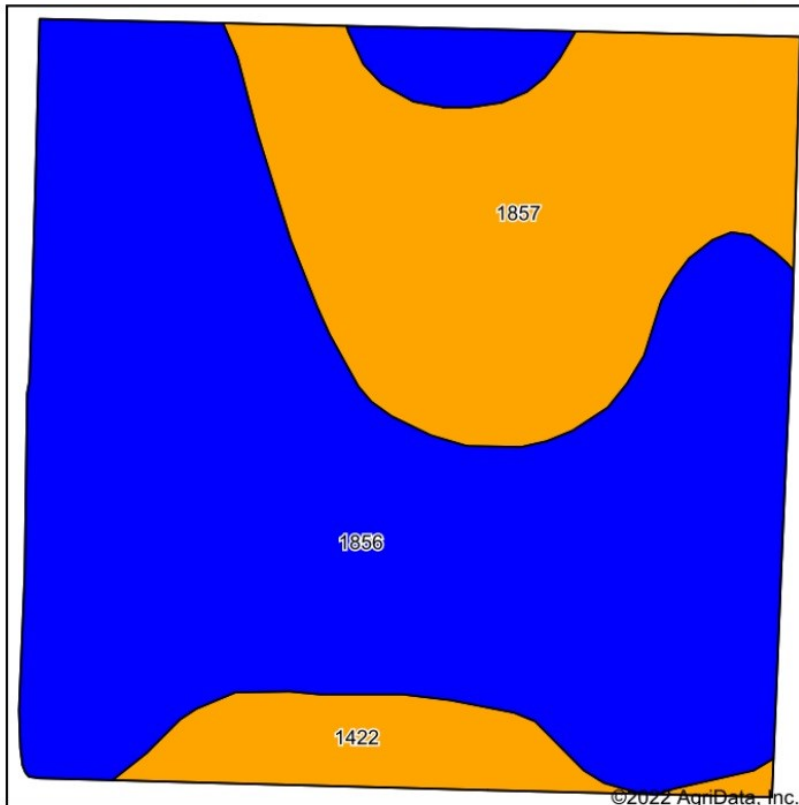


160 Acres of Dry Land

Southwest Quarter 5-23-36

Kearny County, Kansas

Soils Map



State: **Kansas**
 County: **Kearny**
 Location: **5-23S-36W**
 Township: **East Hibbard**
 Acres: **153.95**



Maps Provided By
surety
 CUSTOMIZED ONLINE MAPPING
 © AgriData, Inc. 2021 www.AgriDataInc.com



Soils data provided by USDA and NRCS.

Area Symbol: KS093, Soil Area Version: 18

Code	Soil Description	Acres	Percent of field	Non-Irr Class Legend	Non-Irr Class *c	Irr Class *c	Alfalfa hay Irrigated Tons	Corn Irrigated Bu	Grain sorghum Bu	Grain sorghum Irrigated Bu	Winter wheat Bu	Winter wheat Irrigated Bu	*n NCCPI Soybeans
1856	Ulysses silt loam, 0 to 1 percent slopes	100.84	65.5%		IIIc	Iw			26		22		65
1857	Ulysses silt loam, 1 to 3 percent slopes	43.02	27.9%		IIIe	Ile	5		23	99	20	45	65
1422	Goshen silt loam, rarely flooded	10.09	6.6%		IIIc	Iw	5	118	34	98	34	69	55
Weighted Average					2.34	1.28	1.7	7.7	25.7	34.1	22.2	17.1	*n 64.3

*n: The aggregation method is "Weighted Average using all components"

*c: Using Capabilities Class Dominant Condition Aggregation Method