

I, Treasurer of Butte County, South Dakota, do hereby certify that all taxes which are liens upon the land described hereon, the records of my office, are fully paid.

Dated this 26<sup>th</sup> day of May, 2015

Debbie Lensegrat  
Butte County Treasurer



#### COUNTY AUDITOR'S CERTIFICATE

I, Auditor of Butte County, South Dakota, do hereby certify that at an official meeting held on the 9<sup>th</sup> day of June, 2015, the Butte County Commissioners, by resolution, did approve as shown hereon.

Clair Jones  
Auditor of Butte County



#### PLANNING COMMISSION

Approved by the Planning Commission, Butte County, South Dakota

Dated this 29 day of MAY, 2015

Signed: Don C. Cooper  
Chairman

Attest: Don A. Nelson  
Secretary

#### CERTIFICATE OF HIGHWAY OR STREET AUTHORITY

The location of the proposed access to the Highway or Street as shown hereon is hereby approved. Any change in the location of the proposed access shall require additional approval.

Dated this 20 day of May, 2015

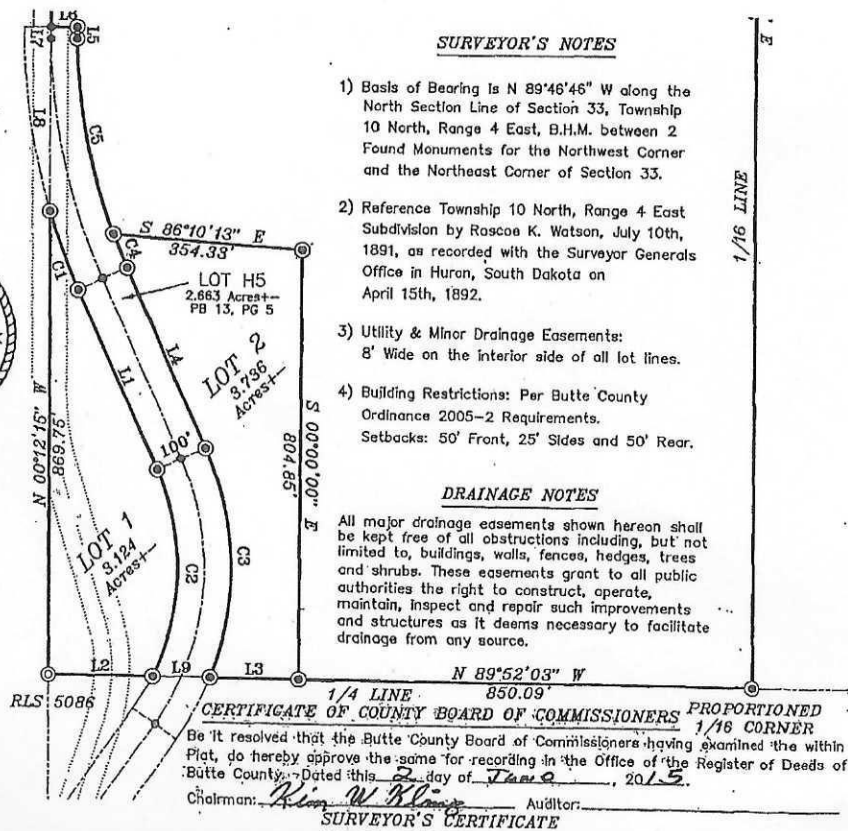
Don A. Nelson  
Highway or Street Authority

#### CERTIFICATE OF DIRECTOR OF EQUALIZATION

I, Director of Equalization of Butte County, South Dakota, do hereby certify that I have on record in my office a copy of the within described plot.

Dated this 26 day of May, 2015

Don A. Nelson  
Butte County  
Director of Equalization



#### SURVEYOR'S NOTES

- 1) Basis of Bearing is N 89°46'46\" W along the North Section Line of Section 33, Township 10 North, Range 4 East, B.H.M. between 2 Found Monuments for the Northwest Corner and the Northeast Corner of Section 33.
- 2) Reference Township 10 North, Range 4 East Subdivision by Roscoe K. Watson, July 10th, 1891, as recorded with the Surveyor Generals Office in Huron, South Dakota on April 15th, 1892.
- 3) Utility & Minor Drainage Easements: 8' Wide on the interior side of all lot lines.
- 4) Building Restrictions: Per Butte County Ordinance 2005-2 Requirements. Setbacks: 50' Front, 25' Sides and 50' Rear.

#### DRAINAGE NOTES

All major drainage easements shown hereon shall be kept free of all obstructions including, but not limited to, buildings, walls, fences, hedges, trees and shrubs. These easements grant to all public authorities the right to construct, operate, maintain, inspect and repair such improvements and structures as it deems necessary to facilitate drainage from any source.

#### CERTIFICATE OF COUNTY BOARD OF COMMISSIONERS

Be it resolved that the Butte County Board of Commissioners having examined the within Plat, do hereby approve the same for recording in the Office of the Register of Deeds of Butte County. Dated this 2 day of June, 2015.

Chairman: Kim W. Blum Auditor: \_\_\_\_\_

#### SURVEYOR'S CERTIFICATE

I, Sharon E. Vasknetz, 1921 Lazelle St., Sturgis, SD, being a Registered Land Surveyor in the State of South Dakota, do hereby state that at the request of the Owners listed hereon, I have surveyed and platted the property shown and described hereon. I have marked upon the ground the boundaries in the manner shown, and that the plat is correct to the best of my knowledge, information and belief.