

FOR SALE | \$212,054 or \$22,900 / Acre | Exceptional Homesite on Pond

Property Features

- 9.26 Acre Homesite located .6 miles off Garners Ferry Road on Arnold Road
- 900± feet on a private pond with two additional owners
- Surrounded by large landowners giving an excellent sense of privacy
- Less than 30 minutes from Downtown Columbia (10 miles from I-77)
- Property is currently zone Rural (RU)
- Price: \$212,054

For more information:

Tom Milliken

O: 803 744 9837 | C: 803 331 6999
tmilliken@naicolumbia.com

Tombo Milliken

O: 803 744 9852 | C: 803 206 8384
tombo.milliken@naicolumbia.com

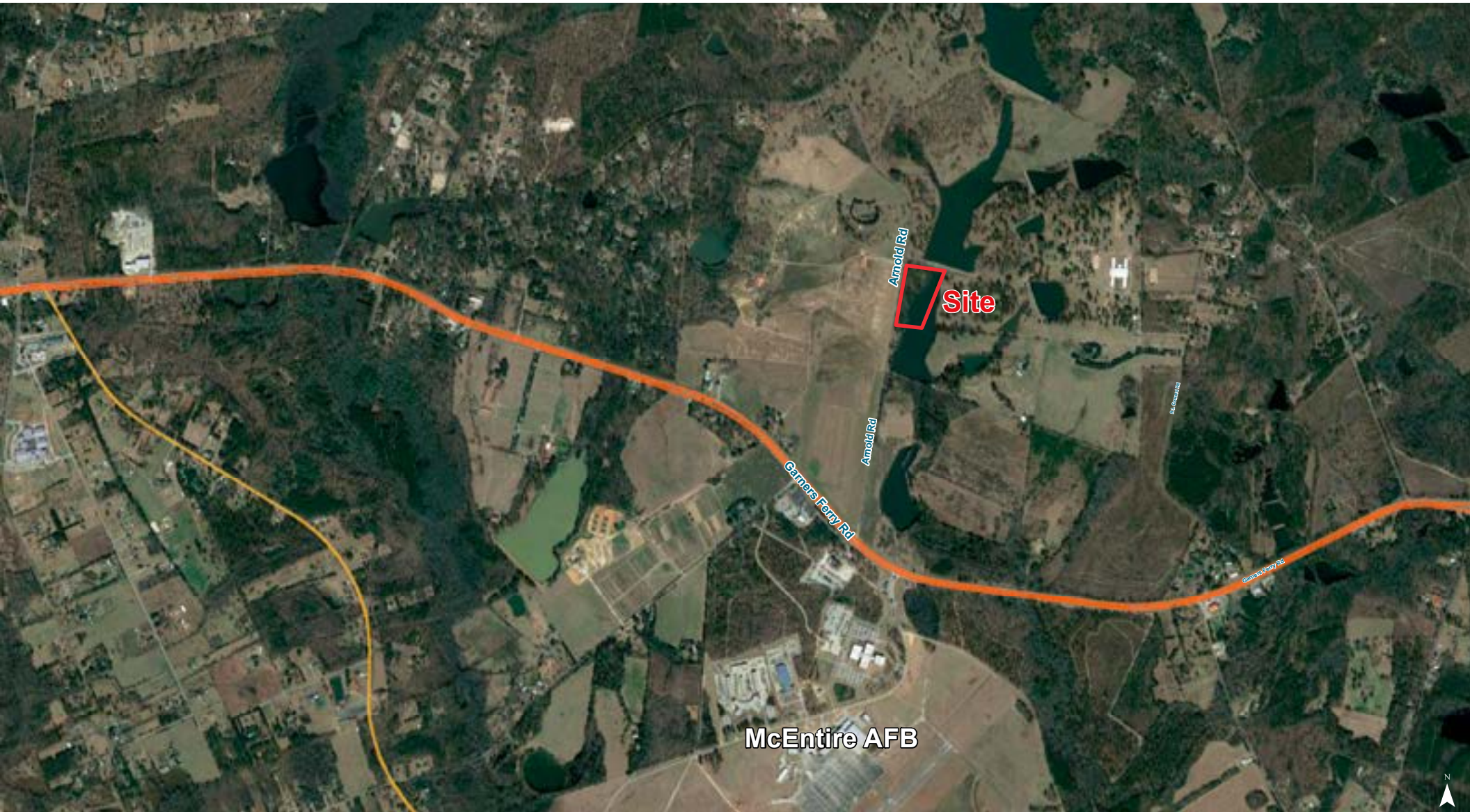
Nelson Weston, III

O: 803 744 9804 | C: 803 678 7346
nweston@naicolumbia.com



Location









Topographical Map: 10'



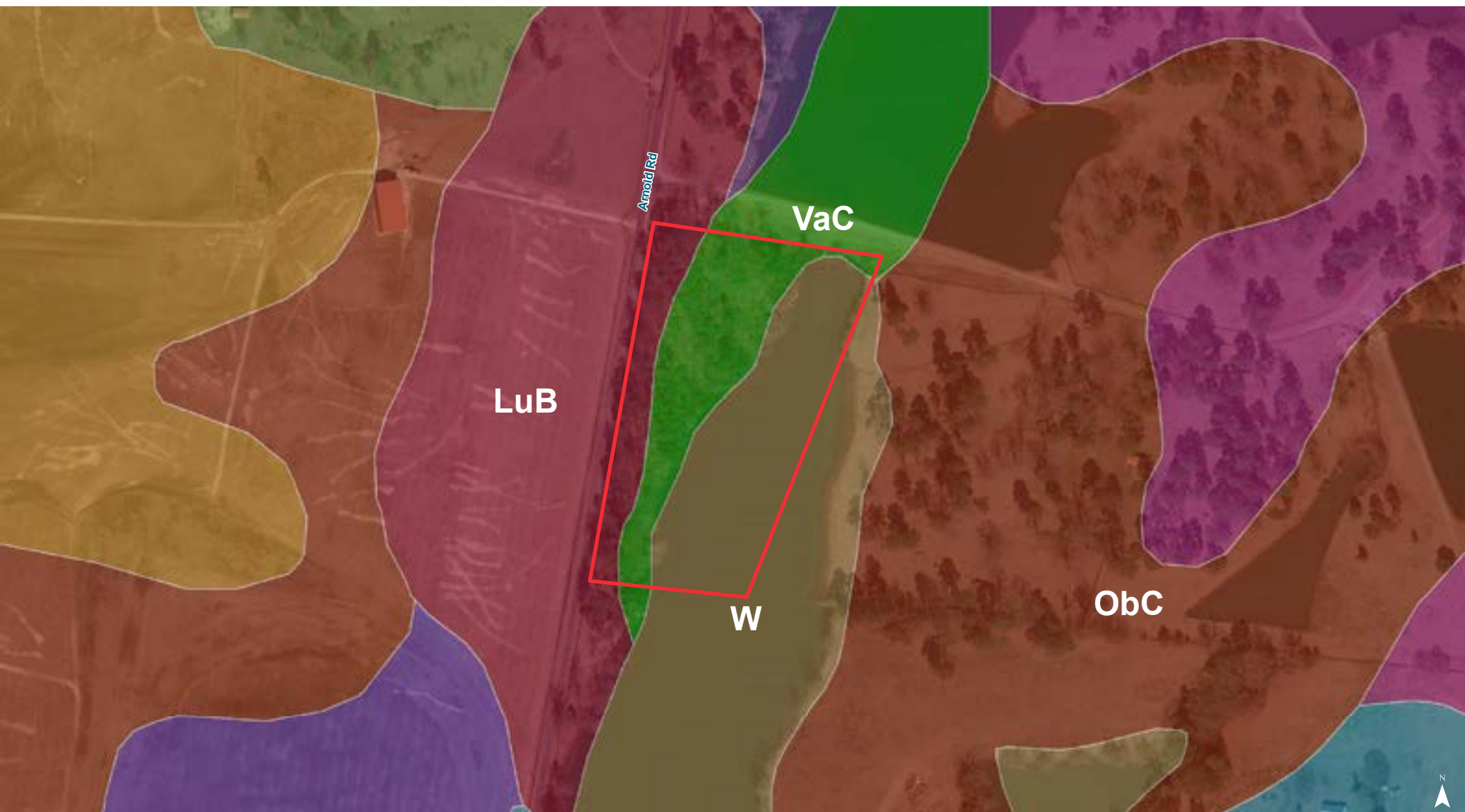
FEMA Flood Zones



Map Updated: Wednesday, October 19, 2022. This information submitted is not guaranteed. Although obtained from reliable sources, all information should be confirmed prior to use or reliance upon the information. This document may not be reproduced in whole or in part without the express written consent of NAI Columbia.



Map Updated: Wednesday, October 19, 2022. This information submitted is not guaranteed. Although obtained from reliable sources, all information should be confirmed prior to use or reliance upon the information. This document may not be reproduced in whole or in part without the express written consent of NAI Columbia.



Map Unit Description (Brief, Generated)

Richland County, South Carolina

[Minor map unit components are excluded from this report]



Map unit: LuB - Lucy loamy sand, 2 to 6 percent slopes

Component: Lucy (100%)

The Lucy component makes up 100 percent of the map unit. Slopes are 2 to 6 percent. This component is on marine terraces on coastal plains. The parent material consists of sandy and loamy marine deposits. Depth to a root restrictive layer is greater than 60 inches. The natural drainage class is well drained. Water movement in the most restrictive layer is moderately high. Available water to a depth of 60 inches is moderate. Shrink-swell potential is low. This soil is not flooded. It is not ponded. There is no zone of water saturation within a depth of 72 inches. Organic matter content in the surface horizon is about 1 percent. Nonirrigated land capability classification is 2s. This soil does not meet hydric criteria.

Map unit: ObC - Orangeburg loamy sand, 6 to 10 percent slopes

Component: Orangeburg (100%)

The Orangeburg component makes up 100 percent of the map unit. Slopes are 6 to 10 percent. This component is on marine terraces on coastal plains. The parent material consists of loamy marine deposits. Depth to a root restrictive layer is greater than 60 inches. The natural drainage class is well drained. Water movement in the most restrictive layer is moderately high. Available water to a depth of 60 inches is moderate. Shrink-swell potential is low. This soil is not flooded. It is not ponded. There is no zone of water saturation within a depth of 72 inches. Organic matter content in the surface horizon is about 1 percent. Nonirrigated land capability classification is 4e. This soil does not meet hydric criteria.

Map unit: VaC - Vaucluse loamy sand, 6 to 10 percent slopes

Component: Vaucluse (100%)

The Vaucluse component makes up 100 percent of the map unit. Slopes are 6 to 10 percent. This component is on marine terraces on sandhills. The parent material consists of loamy marine deposits. Depth to a root restrictive layer is greater than 60 inches. The natural drainage class is well drained. Water movement in the most restrictive layer is low. Available water to a depth of 60 inches is low. Shrink-swell potential is low. This soil is not flooded. It is not ponded. There is no zone of water saturation within a depth of 72 inches. Organic matter content in the surface horizon is about 1 percent. Nonirrigated land capability classification is 3e. This soil does not meet hydric criteria.

Map unit: W - Water

Component: Water (100%)

Generated brief soil descriptions are created for major soil components. The Water is a miscellaneous area.



Survey Area Version: 15
Survey Area Version Date: 12/23/2013

Page 1