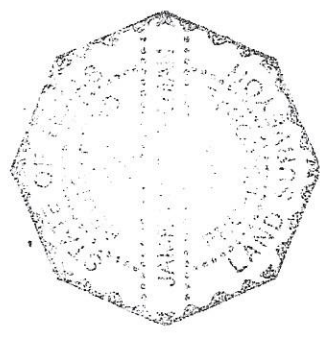
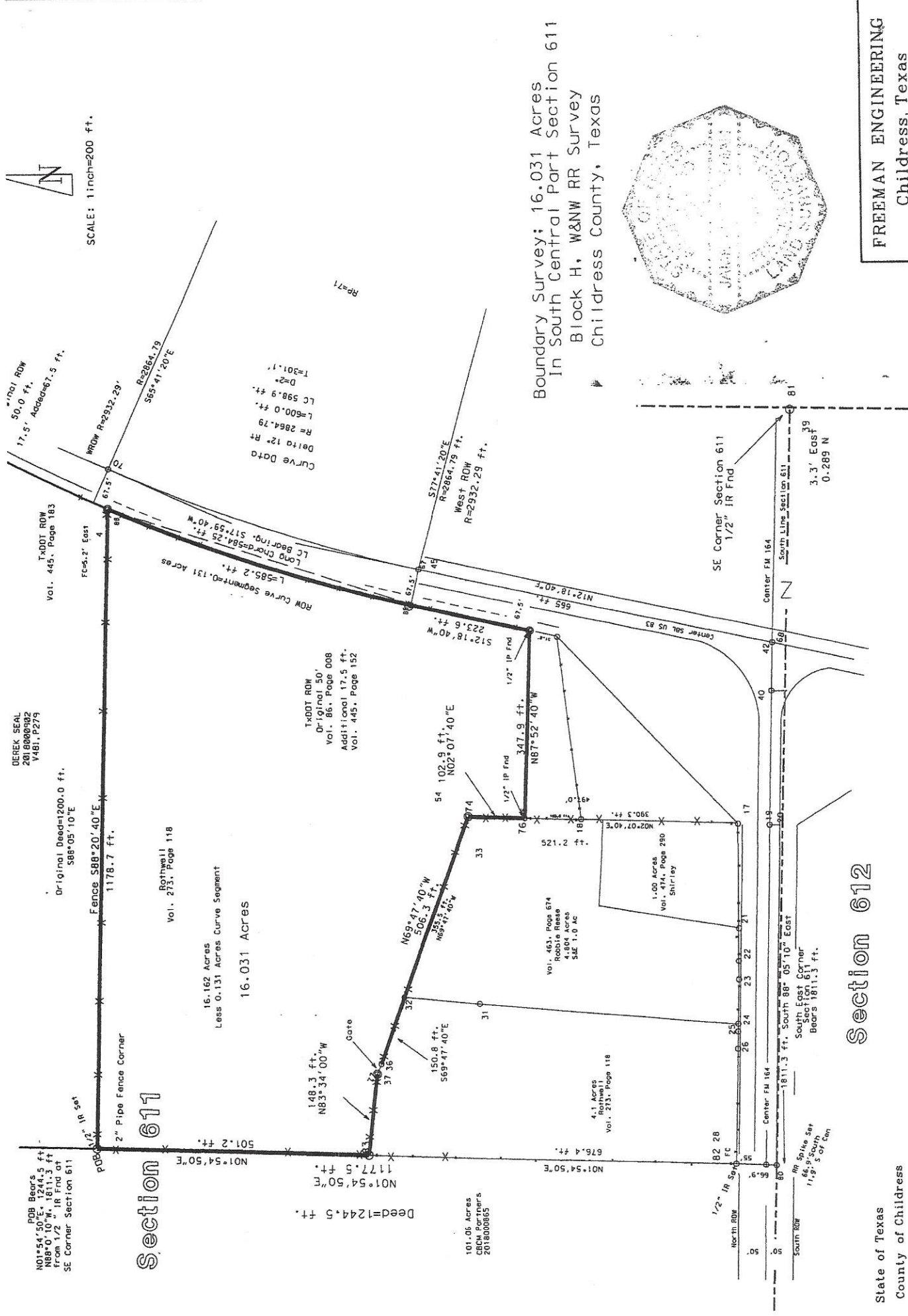


SCALE: 1 inch=200 ft.



**FREEMAN ENGINEERING**  
Childress, Texas  
PO Box 84 940-585-6038

Boundary Survey; 16.031 Acres  
In South Central Part Section 611  
Block H, W&NW RR Survey  
Childress County, Texas

# Section 612

State of Texas  
County of Childress

KNOW ALL MEN by these presents that I James G. Freeman, Registered Professional Land Surveyor in Texas, RPLS 2149, do hereby certify that I have surveyed the above described land and that this survey is true and correct.

James G. Freeman  
January 20, 2022

**Boundary Survey; 16.031 Acres in South Central Part Section 611, Block H, W&NW RR Survey, Childress County, Texas.**

**The North 16.031 Acres of a tract Vested to Jimmy Don Rothwell at Volume 273, Page 118.**

**Basis of Bearing; Geodetic North.**

BEGINNING at a ½ inch iron rod set at the North Base of a 2 inch steel pipe braced fence corner, being North 88 degrees. 05 minutes, 10 seconds West 1811.3 feet, and North 01 degrees, 54 minutes, 50 seconds East, 1244.5 feet from a ½ inch iron rod found at the South East Corner said Section 611. This Point of Beginning being the North West Corner of a tract Vested to Jimmy Don Rothwell at Volume 273 Page 118, and being also the South West Corner of a Tract Vested to Derek Seal at Clerks Instrument 2018000902, in the East line of a 101.06 Acres tract Vested to CBCW partners at Clerks Instrument 2018000865.

THENCE, South 88 degrees, 20 minutes, 40 seconds East, with the north fence of this tract being also the south fence of said Seal Tract, to a ½ inch iron rod set at 1178.7 feet in the West right of Way line of US Highway 83, as described in a ROW Deed at Volume 445, Page 152.

THENCE, 585.2 feet, along the Fence at the West Right of Way Line of said US Highway 83, being in a curve to the left, having a Long Chord of 584.25 feet, with Chord Bearing South 17 degrees, 59 minutes, 40 seconds West, to the End of said Curve.

THENCE, Continuing along the fence at the west Right of Way Line of said US Highway 83, South 12 degrees. 18 minutes, 40 seconds West, to a ½ inch steel pipe found under said fence at 223.6 feet, the South East Corner this tract and the north east corner of a 1.898 Acres tract Vested to James J Boles at Clerk Instrument 2020000827.

THENCE, North 87 degrees, 52 minutes, 40 seconds West, with the south line of this tract being the north line of said Boles Tract, to a ½ inch steel pipe found under a fence at 347.9 feet, the south west corner this tract and the north west corner said Boles Tract, being in the East Fence of a 4.904 Acres tract vested to Robbie Reese at Volume 463, Page 674.

THENCE, North 02 degrees, 07 minutes, 40 seconds East, with the East Fence of said Robbie Reese tract, to a ½ inch iron rod set at a fence corner at 102.9 feet, an L corner this tract and the North East Corner said Robbie Reese Tract.

THENCE, North 69 degrees, 47 minutes, 40 seconds West, with the South Fence of this tract being the north Fence of said Robbie Reese Tract, pass a ½ inch iron rod at 355.5 feet, the North West Corner said Robbie Reese Tract, continuing same bearing, pass the east gate post of a metal gate at 485.8 feet, continuing same bearing to a ½ inch iron rod set at the west gate post of said gate at 506.3 total feet, and angle corner this tract.

THENCE, North 83 degrees, 34 minutes, 00 seconds West, with a fence to a ½ inch iron rod set at a fence corner in the East line of said CBCM Partners tract as described at CI 2018000865, the South West Corner this tract. at 148.3 feet.

THENCE, North 01 degrees, 54 minutes, 50 seconds East, with the West Fence of this tract being also the east fence of said CBCM Partners tract, to the POINT OF BEGINNING at 501.2 feet.

Containing 16.031 Acres.