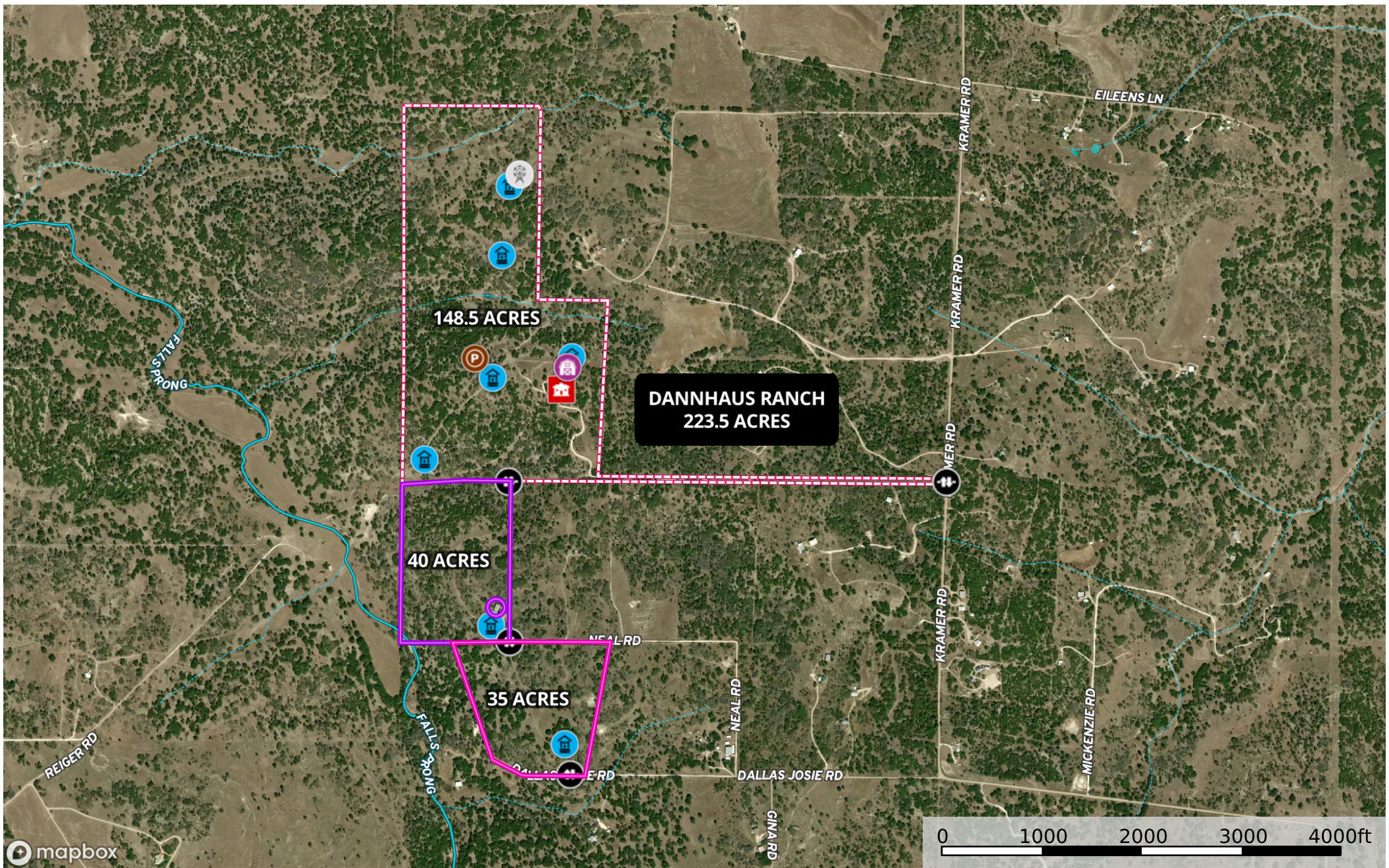


Dannhaus Ranch 223.5 Acres Harper, Texas
Gillespie County, Texas, 223.5 AC +/-



- Gate
- Barn
- Windmill
- Pens
- Main House
- Well 7
- Well 6
- Well 5
- Well 3
- Well 2
- Well 1
- Pond / Tank
- 148 Acres - Boundary
- Stream, Intermittent
- River/Creek
- Water Body
- 35 Acres - Boundary
- 39.5 Acres - Boundary