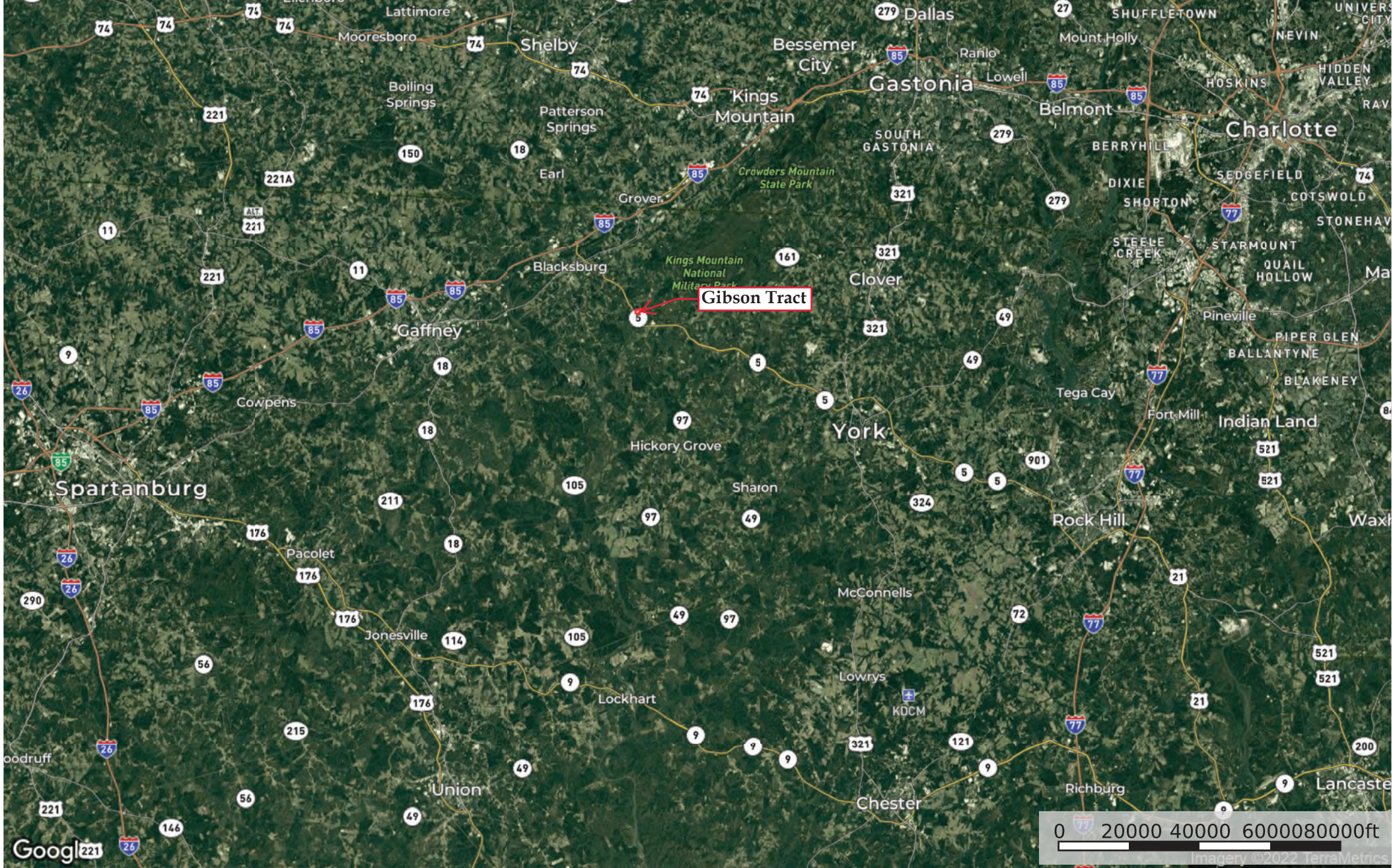
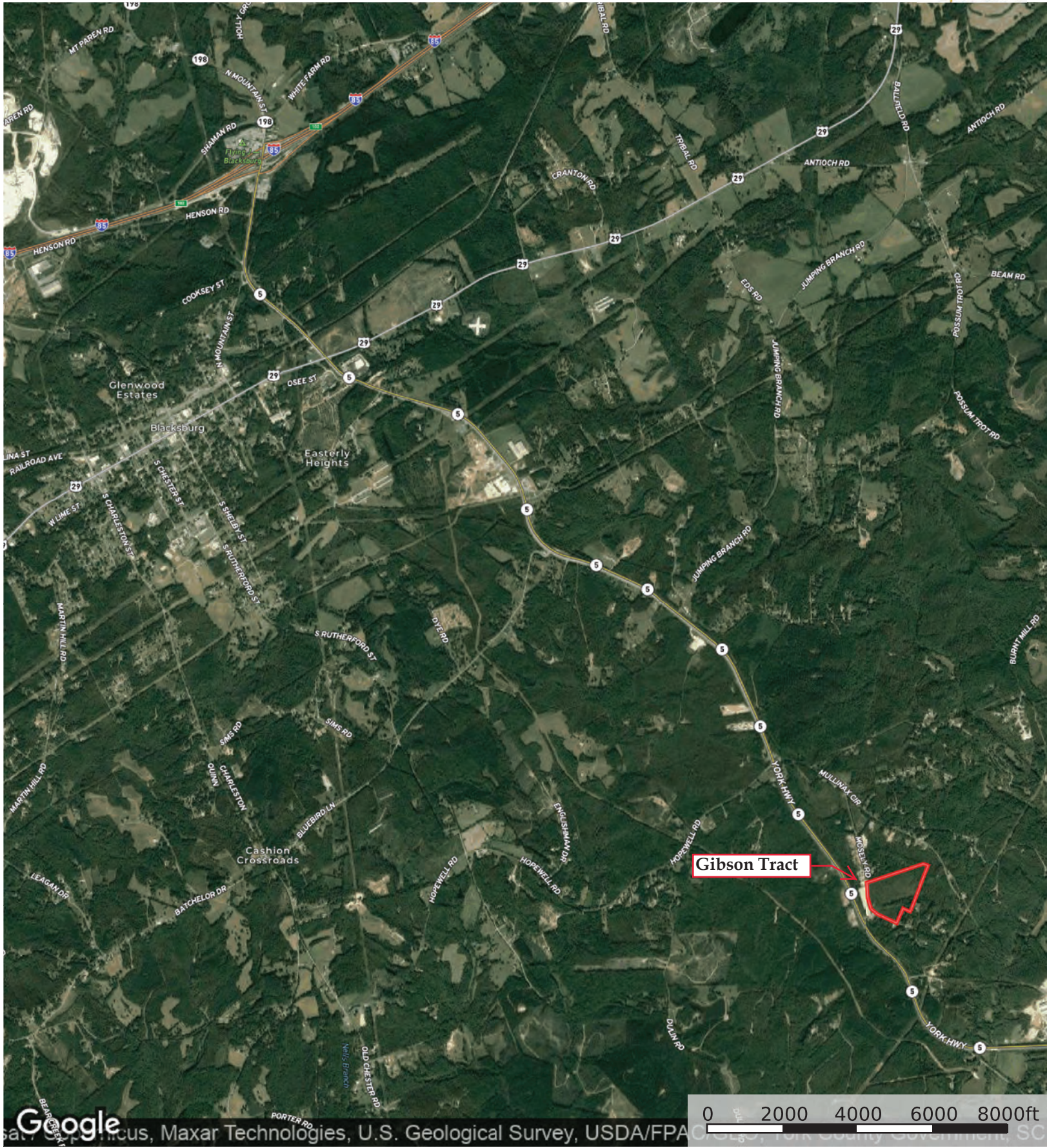


Gibson Tract
Cherokee County, South Carolina, 34 AC +/-





Google

Boundary

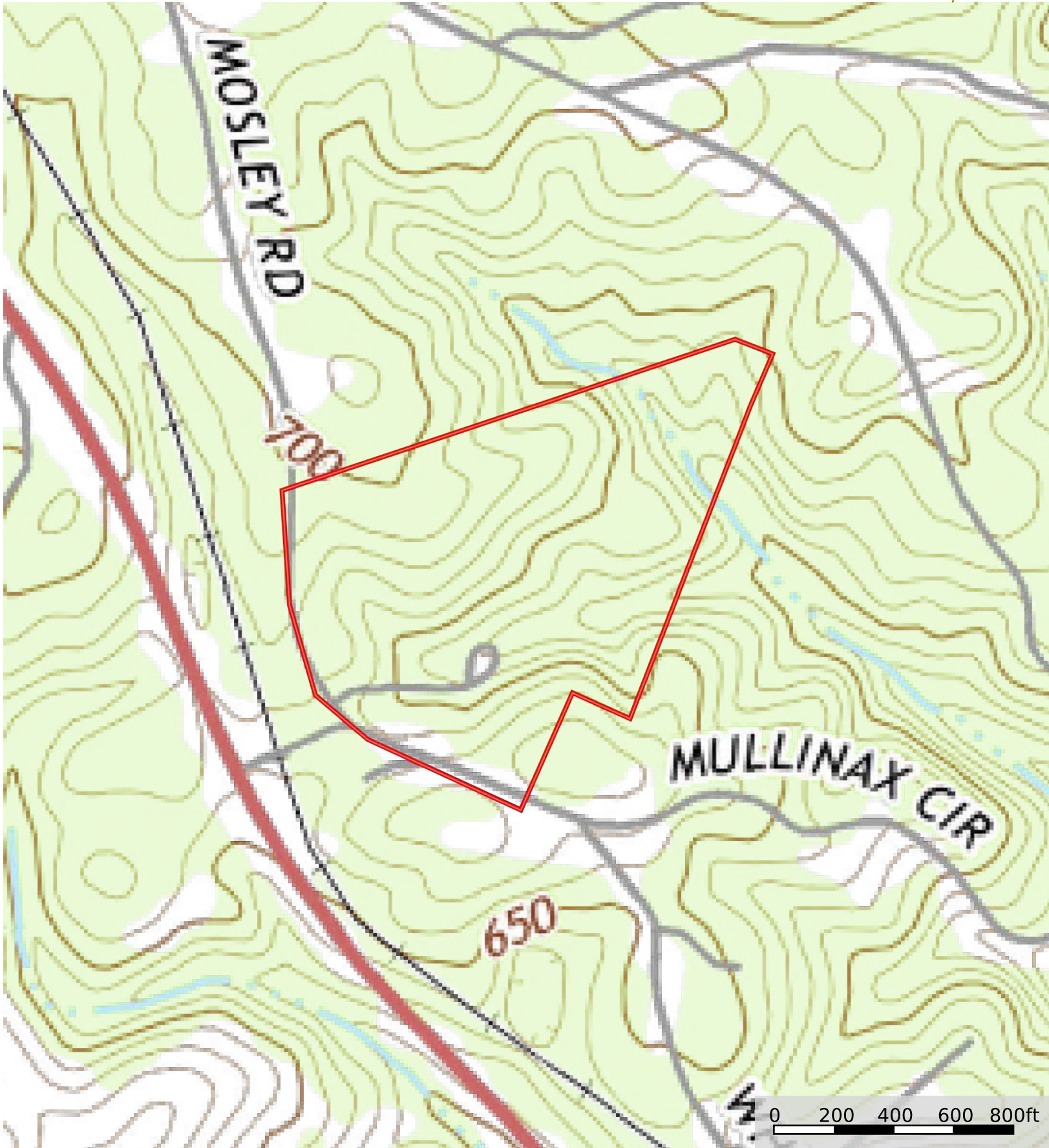


Google

Imagery ©2022 Maxar Technologies, USDA/FPAC, GEO

0 200 400 600 800ft

Boundary



 Boundary

Gibson Tract

Cherokee County, South Carolina
+/- 34 Acres



Stand #	Type	Acres
1	1981 NSHW	5
3	2018 PLOB	25
	Open/Non Forest	4
Total		34

All information is assumed to be accurate and substantially correct but no assumptions of liability is intended. Neither the seller nor the agent or representatives warrant the completeness or accuracy of the information. Seller does not guarantee timber volumes, values, acreages (total, woodland/longland), stand or otherwise, tree ages or the condition and/or function of any improvements, including but not limited to all buildings, machinery, appliances, wells, equipment, livestock and ponds. No representatives or warranties are expressed or implied as to the property, its condition, boundaries or logging feasibility. Prospective buyers should satisfy themselves as to the accuracy of this information.

