

CANTUA CREEK OPEN

Fresno County, California

69.80± Acres

\$558,500
(\$8,000/Acre)



- Westlands Water District
- Priority II Allocation
- Class 1 – Excellent Soils
- Interstate I-5 Frontage
- Nearby Industrial Uses



**PEARSON
REALTY**
AGRICULTURAL PROPERTIES
A Tradition in Trust Since 1919

Offices Serving The Central Valley

FRESNO

7480 N. Palm Ave, Ste 101
Fresno, CA 93711
559.432.6200

VISALIA

3447 S. Demaree Street
Visalia, CA 93277
559.732.7300

BAKERSFIELD

4900 California Ave., #210B
Bakersfield, CA 93309
661.334.2777

www.pearsonrealty.com

Exclusively Presented by:



CANTUA CREEK OPEN

69.80± Acres
Fresno County, CA



PROPERTY LOCATION



CANTUA CREEK OPEN

69.80± Acres
Fresno County, CA



PROPERTY INFORMATION

DESCRIPTION

The 69.8± assessed acres of open ground is located along the I-5 corridor at the Derrick Ave/Highway 33 interchange near Cantua Creek. The property receives Priority II water from the Westlands Water District. Nearby plantings include row crops and almonds. There are several industrial users nearby with convenient access to I-5.

LOCATION

The property is located at the northwest quadrant of Interstate 5 and Derrick Ave/Hwy 33 with ½ mile of frontage on I-5.

LEGAL/ZONING

APN	Acres±	Zoning	Williamson Act
045-090-48s	62.80	AE-40	Yes
045-090-49s	7.00	AE-40	No

Both parcels are located in a portion of Section 24, Township 17S, Range 14E, M.D.B.&M.

WATER

Property is located within Priority II area of Westlands Water District.

SOILS

Panoche loam, 0 to 2 percent slopes

Panoche sandy loam, 0 to 2 percent slopes

Excelsior sandy loam, 0 to 2 percent slopes, MLRA 17

Cerini clay loam, 0 to 2 percent slopes

PRICE/TERMS

\$558,500 cash at the close of escrow.

** Additional 135.35± acres of adjacent open land may be available for purchase.*



CANTUA CREEK OPEN

69.80± Acres
Fresno County, CA



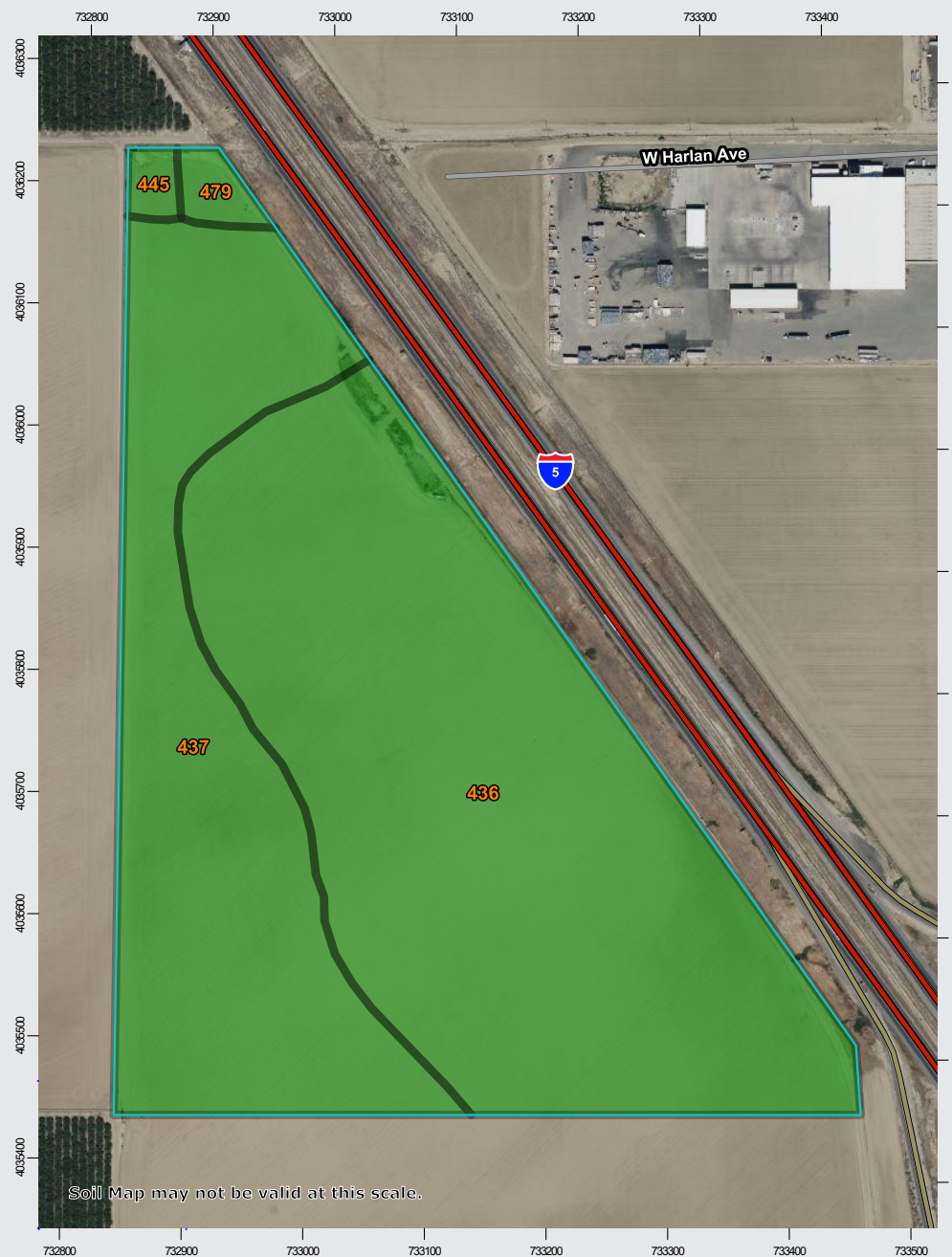
PROPERTY OVERVIEW



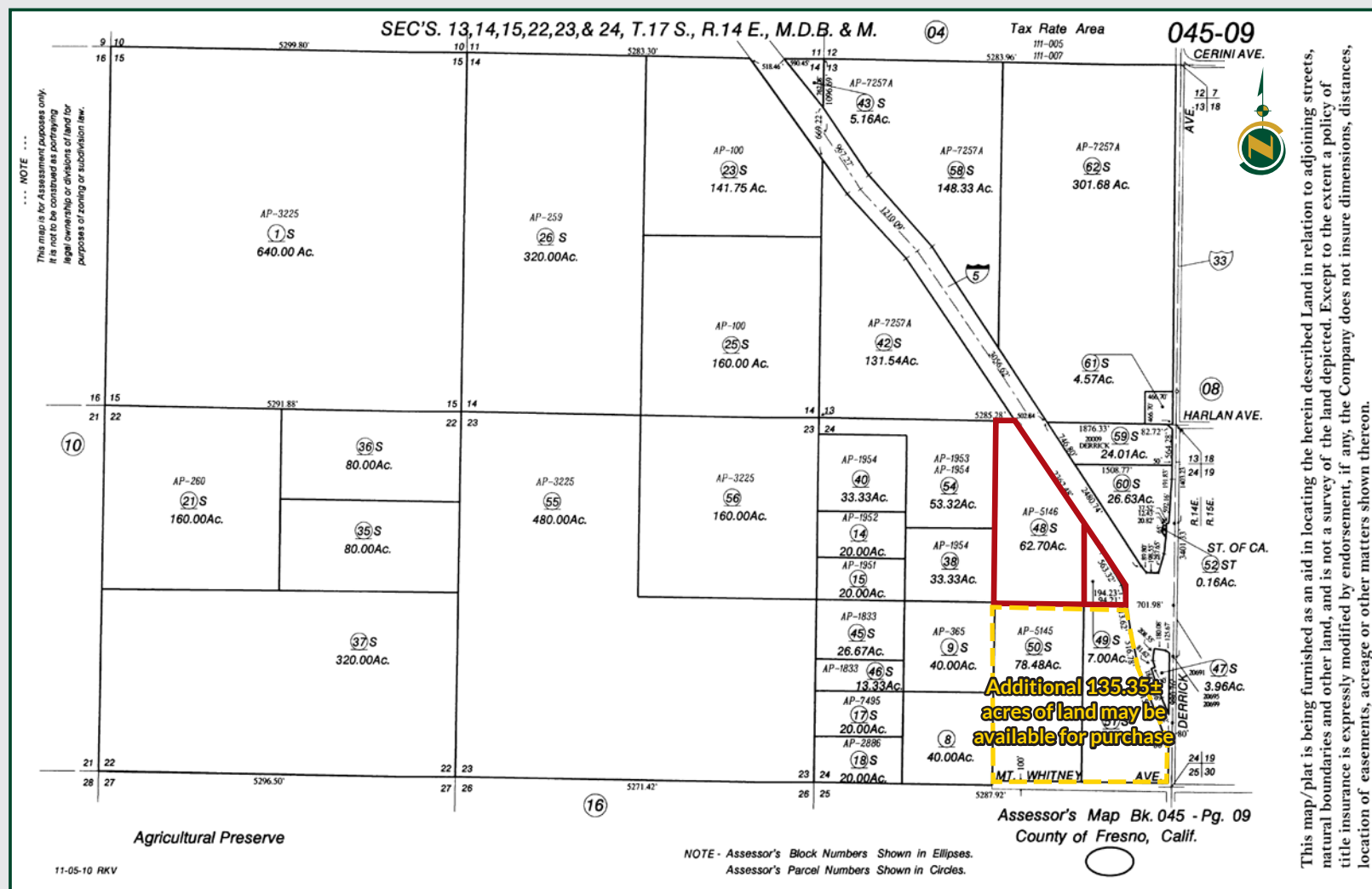
SOILS MAP

California Revised Storie Index (CA)

Map unit symbol	Map unit name	Rating
436	Panoche loam, 0 to 2 percent slopes	Grade 1 - Excellent
437	Panoche sandy loam, 0 to 2 percent slopes	Grade 1 - Excellent
445	Excelsior sandy loam, 0 to 2 percent slopes, MLRA 17	Grade 1 - Excellent
479	Cerini clay loam, 0 to 2 percent slopes	Grade 1 - Excellent



PARCEL MAP



LEGAL/ZONING

APN	Acres±	Zoning	Williamson Act
045-090-48s	62.80	AE-40	Yes
045-090-49s	7.00	AE-40	No

Both parcels are located in a portion of Section 24, Township 17S, Range 14E, M.D.B.&M.

CANTUA CREEK OPEN

69.80± Acres
Fresno County, CA



WESTLANDS WATER DISTRICT

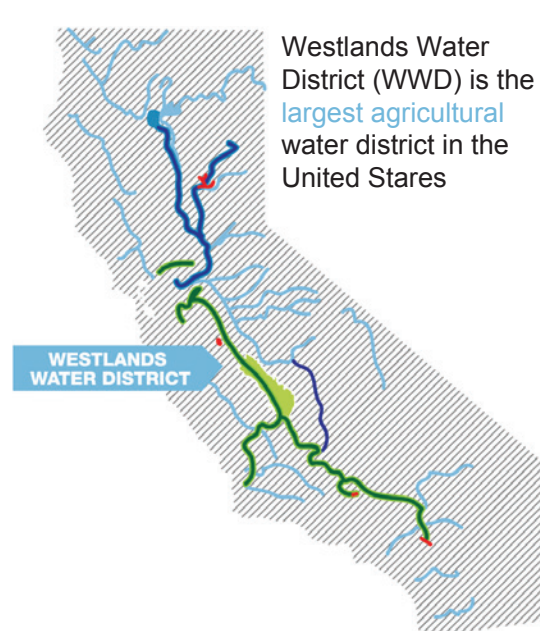
Westlands Water District is the largest agricultural water district in the United States, made up of more than 1,000 square miles of prime farmland in western Fresno and Kings Counties.

CUSTOMERS: Westlands has 700± family farms in the District, which depend upon water for irrigation purposes. Westlands also provides limited quantities of untreated, non-potable Central Valley Project (CVP) water which is ultimately used for municipal and industrial (M&I) purposes in the District.

WHERE DOES THE WATER COME FROM?

- Growers in the fertile Westlands district produce more than sixty high-quality food and fiber crops, including row crops like tomatoes, onions, melons, grapes and nut crops. Central Valley farmers grow products consumed by Californians but also support transportation and logistics jobs involved in transporting products to other states and more than 150 countries around the world.
- WWD farms produce more than 60 commercial food and fiber crops sold for the fresh, dry, canned, and frozen food markets.
- 93% of Westlands' irrigated lands are serviced by efficient drip irrigation systems.
- The Westland's distribution system is fully enclosed and metered system designed to eliminate losses from evaporation and leakage.
- Westlands growers produce an average of more than \$1 billion worth of food and fiber annually, generating approximately \$3.5 billion in farm related economic activities in local communities.

SERVICE AREA: 600,000+ acres
IRRIGATED SIZE: 399,000± acres



YEAR FORMED: 1952
MILES OF PIPE: 1,034±



Central Valley Project I Westlands receives its water allocation under a joint venture agreement between the federal government and the State of California as part of the San Luis Unit of the Central Valley Project (CVP), one of the largest public works projects in the country. Ground-breaking of the San Luis Unit of the Central Valley Project took place in 1962; the San Luis Canal was completed in 1968 and Westlands began receiving water deliveries thereafter. Deliveries from the CVP allow growers in the Westlands District to curtail their dependence on groundwater pumping, which can be associated with aquifer overdraft. Recognizing the value of a consistent and stable water supply to the region and the state, the farms within the Westlands Water District are extremely productive and water-efficient, largely due to the installation and maintenance of modern technological innovations and sustainability strategies. The Westlands water delivery system utilizes 1,034± miles of fully enclosed buried pipes and 3,300 water meters along the entirety of its system to ensure water is delivered with zero losses due to seepage, evaporation, or spills during transportation and delivery. About 93% of Westlands' irrigated lands are serviced by efficient drip irrigation systems, representing an investment of more than \$500 million.

Source: www.wwd.ca.gov

CANTUA CREEK OPEN

69.80± Acres
Fresno County, CA



Water Disclosure: The Sustainable Groundwater Management Act (SGMA) was passed in 2014, requiring groundwater basins to be sustainable by 2040. SGMA requires a Groundwater Sustainability Plan (GSP) by 2020. SGMA may limit the amount of well water that may be pumped from underground aquifers. Buyers and tenants to a real estate transaction should consult with their own water attorney; hydrologist; geologist; civil engineer; or other environmental professional.

Additional information is available at:
California Department of Water Resources Sustainable Groundwater Management Act Portal - <https://sgma.water.ca.gov/portal/>
Telephone Number: (916) 653-5791

Policy on cooperation:
All real estate licensees are invited to offer this property to prospective buyers. Do not offer to other agents without prior approval.

Offices Serving The Central Valley

FRESNO

7480 N. Palm Ave, Ste 101
Fresno, CA 93711
559.432.6200

VISALIA

3447 S. Demaree Street
Visalia, CA 93277
559.732.7300

BAKERSFIELD

4900 California Ave., #210B
Bakersfield, CA 93309
661.334.2777



www.pearsonrealty.com

DRE# 00020875



Download Our Mobile App!

<http://pearsonrealty.com/mobileapp>



Download on the
App Store



GET IT ON
Google Play