



T R O P H Y
PROPERTIES AND AUCTION
LAND | RECREATIONAL | RESIDENTIAL

168.8± Acres with Lodge and 3± Acre Lake for Sale - Ralls County

www.TrophyPA.com • (855) 573-5263 • leads@trophyhpa.com



PROPERTY ADDRESS:

18770 Homestead Road
New London, MO 63459

PRICE: \$1,999,000

ACRES: 168.8

COUNTY: Ralls

PROPERTY DESCRIPTION:

This beautifully restored lodge sits on 168± acres and overlooks a 3± acre lake. Turkey Creek runs through the property which is a great mix of fields and timber. FSA maps show 78.8 acres of tillable.

The beautiful and spacious living, kitchen, dining area includes a large stone fire-place and vaulted ceiling. The kitchen is well equipped and there is plenty of room to entertain on a large scale. Big windows fill the space with natural light and several sets of French doors open onto the wrap around porch. The main floor master suite includes a 2-person jet tub, large custom shower, and sauna room.

There are two upstairs bedrooms with a bathroom and steam shower. Both bedrooms open onto balconies overlooking the property. Other features of the 3 bed / 3 bath home include custom stair railing, custom stonework, exposed aggregate driveway and patio, wraparound porch, water feature and nicely landscaped front entrance, metal roof, cedar siding, and backup generator.



PRESENTED BY:

PHIL BROWN

Broker/Partner

M: (314) 753-7444

P: (855) 573-5263 x700

E: philbrown@trophyhpa.com

Trophy Properties and Auction

15480 Clayton Road

Suite 101

Ballwin, MO 63011

www.Trophyhpa.com

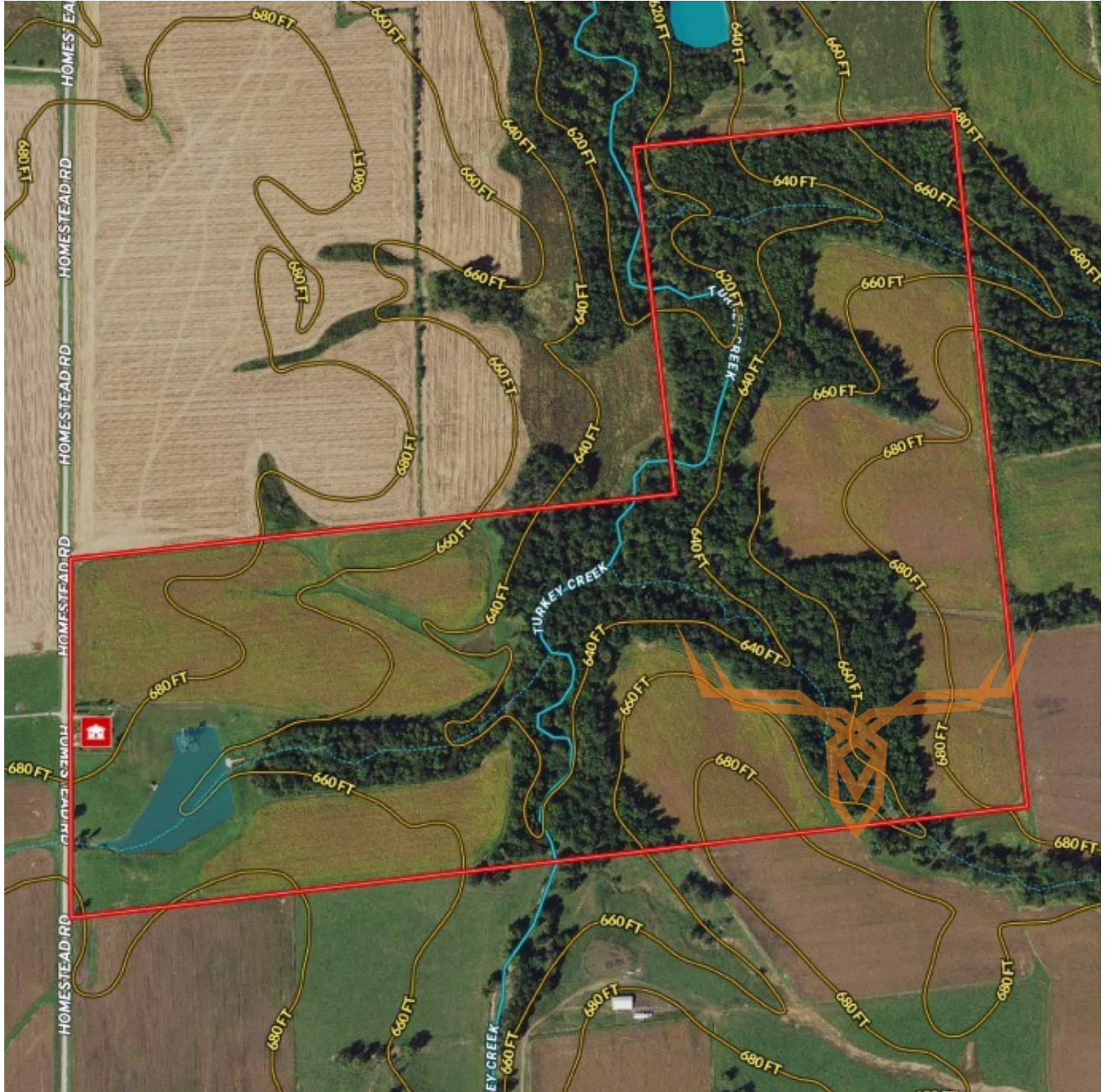
leads@trophyhpa.com



168.8± Acres with Lodge and 3± Acre Lake for Sale - Ralls County

T R O P H Y
PROPERTIES AND AUCTION
LAND | RECREATIONAL | RESIDENTIAL

www.TrophyPA.com • (855) 573-5263 • leads@trophyPA.com



Broker does not guarantee the accuracy of sq. ft., lot size, or other information, buyer is advised to independently verify the accuracy of information through personal inspection and with appropriate professionals