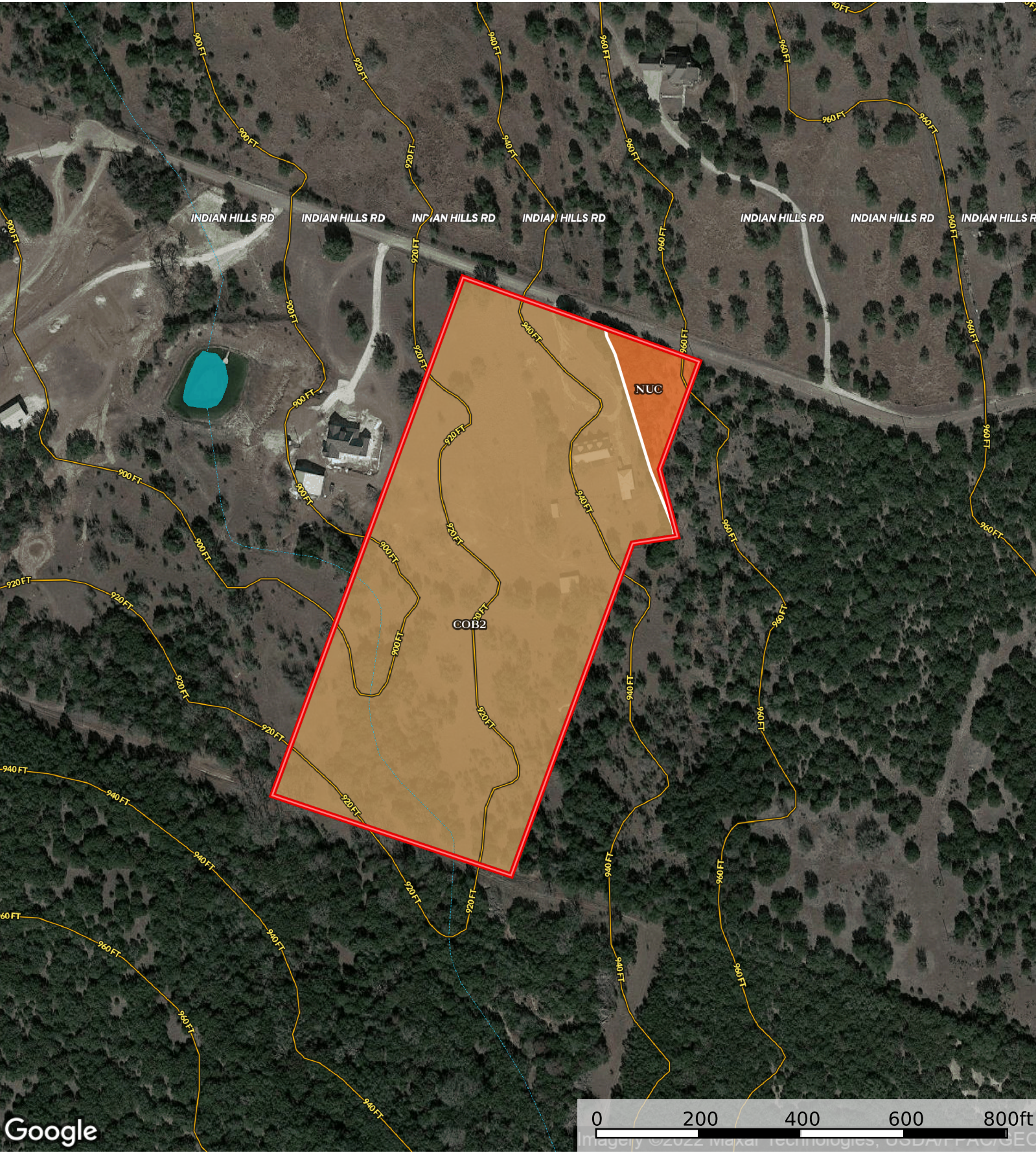


Maceachern - 601 Indian Hills Rd
Coryell County, Texas, 12 AC +/-



Boundary Stream, Intermittent River/Creek Water Body

Boundary 12.17 ac

| SOIL CODE | SOIL DESCRIPTION | ACRES | % | CPI | NCCPI | CAP |
|-----------|--|----------|-------|-----|-------|------|
| CoB2 | Cisco fine sandy loam, 1 to 5 percent slopes, eroded | 11.59 | 95.23 | 0 | 38 | 3e |
| NuC | Nuff very stony silty clay loam, 2 to 6 percent slopes | 0.58 | 4.77 | 0 | 28 | 6s |
| TOTALS | | 12.17(*) | 100% | - | 37.52 | 3.14 |









(*) Total acres may differ in the second decimal compared to the sum of each acreage soil. This is due to a round error because we only show the acres of each soil with two decimal.

Capability Legend

Increased Limitations and Hazards

Decreased Adaptability and Freedom of Choice Users

Land, Capability

| |  |  |  |  |  |  |  |  |
|--------------|---|---|---|---|--|---|---|---|
| | 1 | 2 | 3 | 4 | 5 | 6 | 7 | 8 |
| 'Wild Life' | • | • | • | • | • | • | • | • |
| Forestry | • | • | • | • | • | • | • | |
| Limited | • | • | • | • | • | • | • | |
| Moderate | • | • | • | • | • | • | | |
| Intense | • | • | • | • | • | | | |
| Limited | • | • | • | • | | | | |
| Moderate | • | • | • | | | | | |
| Intense | • | • | | | | | | |
| Very Intense | • | | | | | | | |

Grazing Cultivation

(c) climatic limitations (e) susceptibility to erosion

(s) soil limitations within the rooting zone (w) excess of water