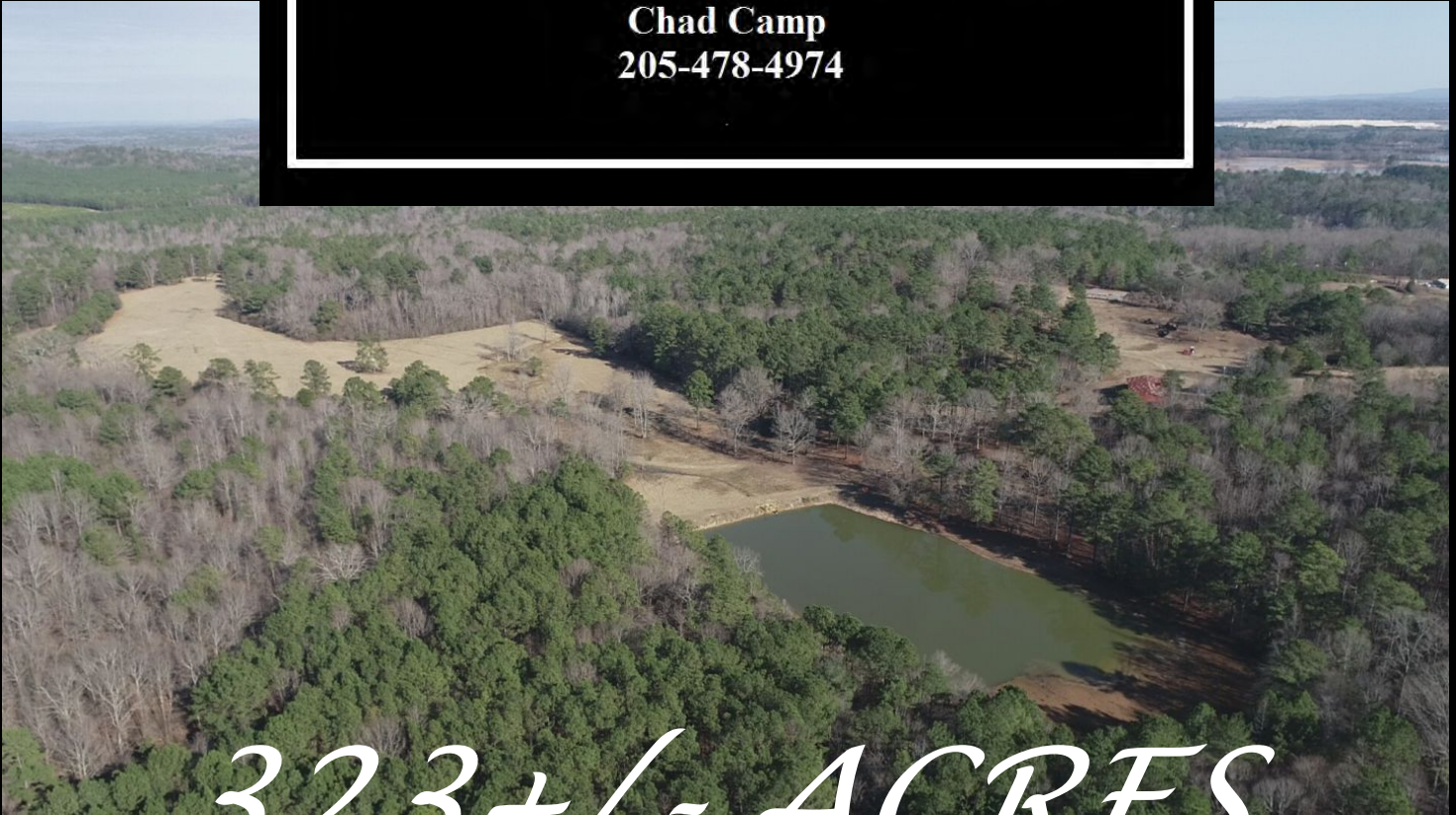




**AlabamaLandAgent.com**

**Land • Farms • Lake Property**

**Chad Camp  
205-478-4974**



**323+/- ACRES**

**Riverside, AL**

323+/- Acre Red Barn Farm in Riverside, AL is moments away from Birmingham. The farm would be great for the Multi-Generational seekers looking to build the family compound or someone looking for a pleasure farm with long term investment. Property is nestled within Riverside City limits and currently Zoned Residential and Agriculture. Just 6 minutes off the Interstate does offer the potential for a subdivision for the long term minded user as well someone looking to take off early to Turkey or Deer Hunt in the afternoon. The topography of the property is diversified and offers a Gorgeous Lodge or Home Site overlooking the pasture, 2 acre lake and a slight view of the Coosa River on Logan Martin Lake. Potential Horse Farm Owner looking to build a private equestrian facility could have a dynamic setup just minutes off I-20, not to mention you would only be 6 minutes from Dr. Ed Murray Coosa Valley Equine Center. There are 4 Green Fields with Shooting Houses. Over 3 Miles of trails for Horses or ATV Riding. Approximately 2 Acre Fishing Lake with Tiger Bass and Bluegill. Approximately 30+/- Acres of Pasture Land Fenced and presently holding cattle. Approximately 3,600 sq. ft Red Barn. Over 4,000 ft. on Sugar Farm Road. Potential larger lake site on the North side of the Property.

**Chad Camp  
(205) 478-4974**



**AlabamaLandAgent.com**

**Land • Farms • Lake Property**

Directions: From Birmingham, AL - East on I-20 to Exit 162





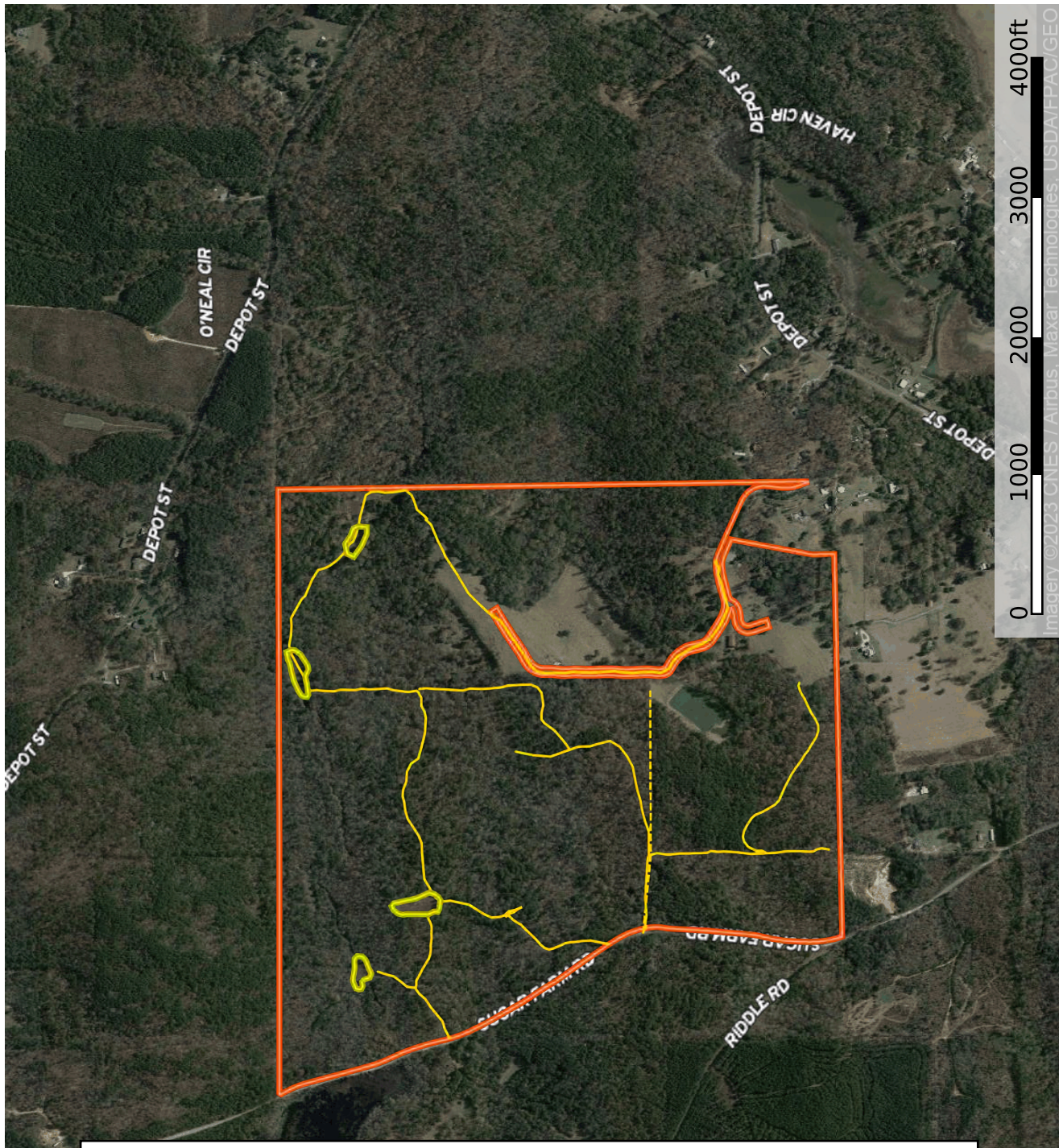
## Riverside 323+/- Ac Farm

- Over 4,000 ft. on Sugar Farm Road
- Over 3 Miles of Riding Trails (Potentially for More)
- 4 Green Fields (More Potentially)
- Approximately 2 Acre Lake (Stocked with Tiger Bass & Bream)
- Approximately 30+/- Acres Fenced (Cattle or Horses)
- Approximately 45x80 Barn
- Two Entrances

Partly Zoned Residential and Ag.

6 Minutes from Riverside Exit

3 Minutes from Boat Ramp



Google



