

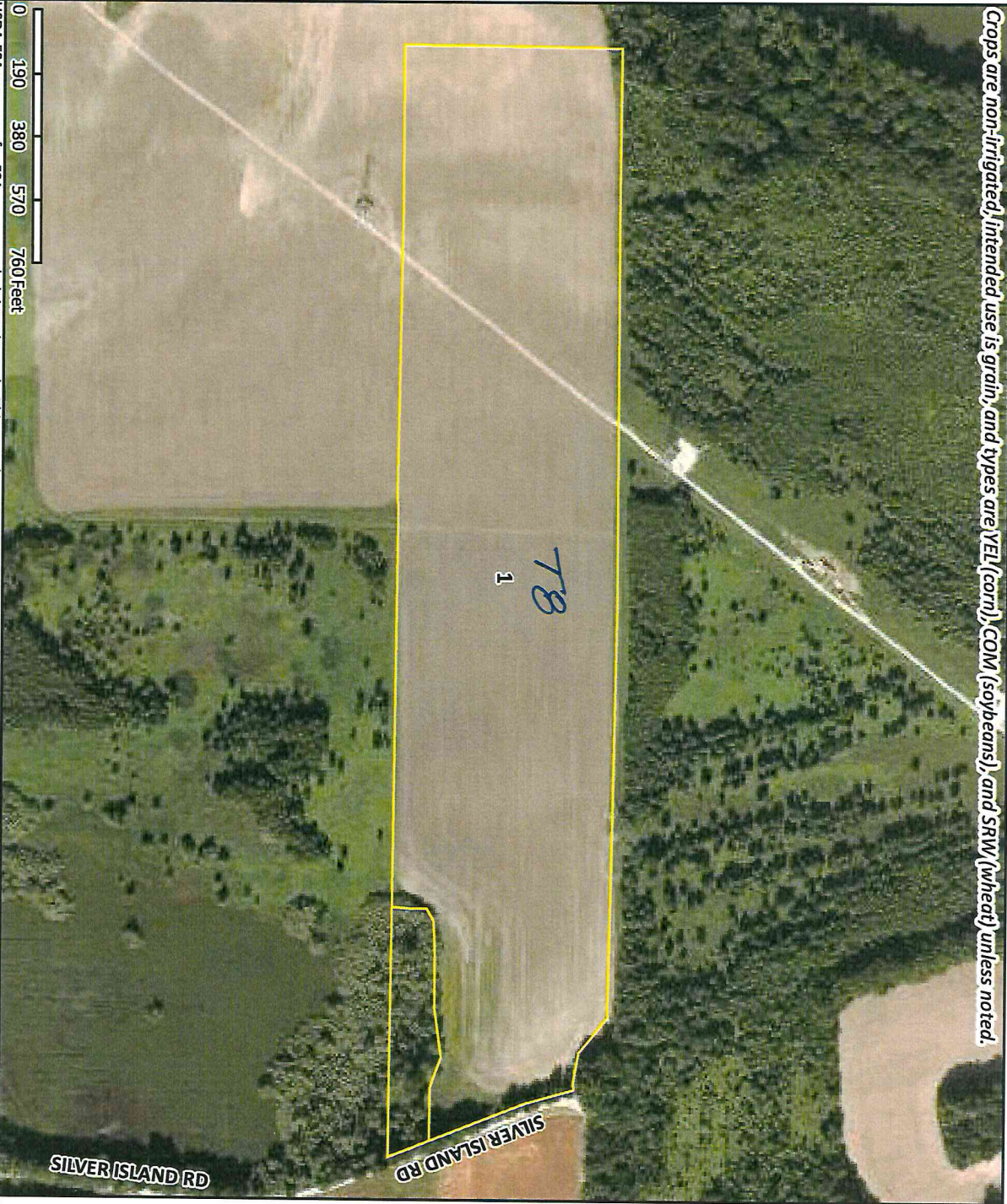
78

USDA Farm 6594 Tract 6203
Administered by: Fountain County, Indiana
OP: WALKER PLACE
OW: WINTERBERG LLC
Source: Primarily USDA NAIP 2022 FAW's production imagery; IDHS or Dynamap roads; FSA data 2022-12-12 13:44:27

2023 Certification map prepared on: 12/12/2022
48.39 Tract acres
46.18 Cropland acres
0 CRP acres
commercial

Crops are non-irrigated, intended use is grain, and types are YEL (corn), COM (soybeans), and SRW (wheat) unless noted.

☐ CRP
☒ CLU
Wetland Determination Identifiers:
☒ Restricted Use
☒ Limited Restrictions Fountain
☒ Exempt from Conservation Compliance Provisions



CLU	Acres	HEL	LC	Contract	Prac	Yr	CI
1	46.18	N	2				Y

78

USDA FSA maps are for FSA program administration only. This map does not represent a legal survey or reflect actual ownership; rather it depicts information provided directly from the producer and/or NAIP imagery. The producer accepts the data 'as is' and assumes all risks associated with its use. The USDA Farm Service Agency assumes no responsibility for actual or consequential damage incurred as a result of any user's reliance on this data outside FSA programs. Wetland Identifiers do not represent the size, shape, or specific determination of the area. Refer to your original determination (CPA-026 and attached maps) for exact boundaries and determinations or contact NRCS.

78

FARM: 6594

Indiana

U.S. Department of Agriculture

Prepared: 12/27/22 1:53 PM

Fountain

Farm Service Agency

Crop Year: 2023

Report ID: FSA-156EZ

Abbreviated 156 Farm Record

Page: 8 of 10

DISCLAIMER: This is data extracted from the web farm database. Because of potential messaging failures in MIDAS, this data is not guaranteed to be an accurate and complete representation of data contained in the MIDAS system, which is the system of record for Farm Records.

78
Tract Number: 6203 Description FULTON TWP S10 T18N R9W

FSA Physical Location : Fountain, IN

ANSI Physical Location: Fountain, IN

BIA Range Unit Number:

HEL Status: NHEL: no agricultural commodity planted on undetermined fields

Recon Number

Wetland Status: Wetland determinations not complete

2015- 102

WL Violations: None

Farmland	Cropland	DCP Cropland	WBP	WRP	EWP	CRP Cropland	GRP
48.39	46.18	46.18	0.0	0.0	0.0	0.0	0.0
State Conservation	Other Conservation	Effective DCP Cropland	Double Cropped	MPL/FWP			
0.0	0.0	46.18	0.0	0.0			

Crop	Base Acreage	PLC Yield	CCC-505 CRP Reduction
WHEAT	2.47	50	0.00
CORN	41.53	108	0.00
SOYBEANS	2.18	34	0.00
Total Base Acres:	46.18		

Owners: WINTERBERG LLC

Other Producers: None

Tract Number: 6333 Description FULTON TWP S15 & S10 T18N R9W

FSA Physical Location : Fountain, IN

ANSI Physical Location: Fountain, IN

BIA Range Unit Number:

HEL Status: NHEL: no agricultural commodity planted on undetermined fields

Recon Number

Wetland Status: Wetland determinations not complete

2016- 102

WL Violations: None

Farmland	Cropland	DCP Cropland	WBP	WRP	EWP	CRP Cropland	GRP
264.06	225.03	225.03	0.0	0.0	0.0	0.0	0.0
State Conservation	Other Conservation	Effective DCP Cropland	Double Cropped	MPL/FWP			
0.0	0.0	225.03	0.0	0.0			

Crop	Base Acreage	PLC Yield	CCC-505 CRP Reduction
WHEAT	2.68	50	0.00
CORN	193.93	125	0.00
SOYBEANS	28.41	36	0.00